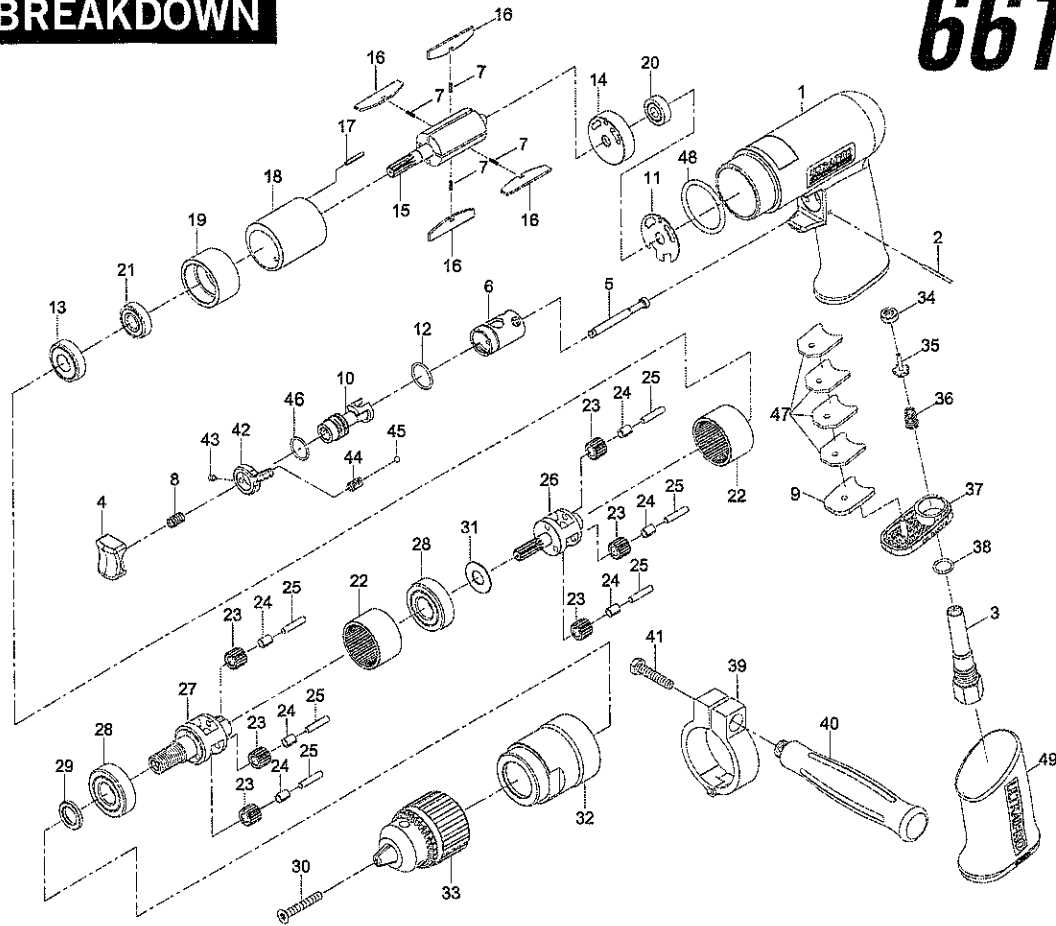


PARTS BREAKDOWN

66136



REF. #	ITEM #	DESCRIPTION	QTY
1	RS113401UP	MOTOR HOUSING	1
2	RS282702	PIN	1
3	RS282703	AIR INLET	1
4	RS282704	TRIGGER	1
5	RS282705	VALVE STEM	1
6	RS282706	REVERSE BUSHING	1
7		SPRING (INCLUDED W/ #16)	4
8	RS79408N	VALVE SPRING	1
9	RS282709	MUFFLER	1
10	RS282710	REVERSE VALVE	1
11	RS282711	MOTOR GASKET	1
12	RS24009	O-RING	1
13	RS227B25	BALL BEARING	1
14	RS282714	REAR END PLATE	1
15	RS182715	ROTOR	1
16	RS182716S	ROTOR BLADE (4 PACK W/ #7 SPRINGS)	1
17	RS282717	SPRING PIN	1
18	RS182718	CYLINDER	1
19	RS182719	FRONT END PLATE	1
20	RS108A12	BALL BEARING	1
21	RS288734	BALL BEARING	1
22	RS182722	INTERNAL GEAR	2
23	RS182723	PLANET GEAR	6
24		OILLESS BEARING (INCL. W/ #23)	6
25	RS182725	PIN	6

REF. #	ITEM #	DESCRIPTION	QTY
26	RS182726	WORK SPINDLE	1
27	RS182727A	WORK SPINDLE	1
28	RS21109	BALL BEARING	2
29	RS182729A	WASHER	1
30	RS182730	SCREW	1
31	RS182731	WASHER	1
32	RS282732	CLAMP NUT	1
33	RS182733A	1/2" CHUCK W/ KEY	1
34	RS24050	VALVE SEAT	1
35	RS24051	VALVE	1
36	RS24052	SPRING	1
37	RS282737	EXHAUST DIFFUSER	1
38	RS76209	O-RING	1
39	RS113639	RETAINER	1
40	RS182740	HANDLE	1
41	RS182748	BOLT	1
42	RS282742	REVERSE LEVER	1
43	RS24036	SET SCREW	1
44	RS24029	SPRING	1
45	RS24030	STEEL BALL	1
46	RS24023	O-RING	1
47	RS282747	MUFFLER	4
48	RS282748	DECORATION RING	1
49	RS113443UP	RUBBER GRIP	1

NOT SHOWN: RS182733K CHUCK KEY ONLY

PLEASE REVIEW ALL WARNING INSTRUCTIONS PRIOR TO OPERATION. SAVE THIS MANUAL FOR FUTURE REFERENCE.

66136: 1/2" Reversible Air Drill with Keyed Chuck

REF. #	ITEM #	DESCRIPTION	QTY.	PURCHASE PRICE
1	RS113401UP	Motor Housing	1	\$41.21
2	RS282702	Pin	1	\$1.00
3	RS282703	Air Inlet	1	\$4.80
4	RS282704	Trigger	1	\$1.00
5	RS282705	Valve Stem	1	\$2.36
6	RS282706	Reverse Bushing	1	\$4.88
7		Spring (included w/ #16)	4	
8	RS79408N	Valve Spring	1	\$1.00
9	RS282709	Muffler	1	\$1.00
10	RS282710	Reverse Valve	1	\$5.43
11	RS282711	Motor Gasket	1	\$1.00
12	RS24009	O-Ring	1	\$1.00
13	RS227B25	Ball Bearing	1	\$5.47
14	RS282714	Rear End Plate	1	\$2.71
15	RS182715	Rotor	1	\$9.11
16	RS182716S	Rotor Blade (4 pack w/ #7 Springs)	1	\$3.09
17	RS282717	Spring Pin	1	\$1.00
18	RS182718	Cylinder	1	\$10.30
19	RS182719	Front End Plate	1	\$3.64
20	RS108A12	Ball Bearing	1	\$7.82
21	RS288734	Ball Bearing	1	\$2.76
22	RS182722	Internal Gear	2	\$9.35
23	RS182723	Planet Gear	6	\$3.66
24		Oilless Bearing (Incl. w/ #23)	6	
25	RS182725	Pin	6	\$1.00
26	RS182726	Work Spindle	1	\$13.62
27	RS182727	Work Spindle	1	\$18.22
28	RS21109	Ball Bearing	2	\$5.35
29	RS182729A	Washer	1	\$1.00
30	RS182730	Screw	1	\$1.00
31	RS182731	Washer	1	\$1.00
32	RS282732	Clamp Nut	1	\$9.11
33	RS182733A	1/2" Chuck w/ Key	1	\$39.18
34	RS24050	Valve Seat	1	\$1.00
35	RS24051	Valve	1	\$1.09
36	RS24052	Spring	1	\$1.00
37	RS282737	Exhaust Diffuser	1	\$1.00
38	RS76209	O-Ring	1	\$1.00
39	RS113539	Retainer	1	\$5.94
40	RS182740	Handle	1	\$2.80
41	RS182748	Bolt	1	\$1.00
42	RS282742	Reverse Lever	1	\$5.42
43	RS24036	Set Screw	1	\$1.00
44	RS24029	Spring	1	\$1.00
45	RS24030	Steel Ball	1	\$1.00
46	RS24023	O-Ring	1	\$1.00
47	RS282747	Muffler	4	\$1.00
48	RS282748	Decoration Ring	1	\$1.00
49	RS113443UP	Rubber Grip	1	\$2.71
Not Shown	RS182733K	Chuck Key Only		\$1.71