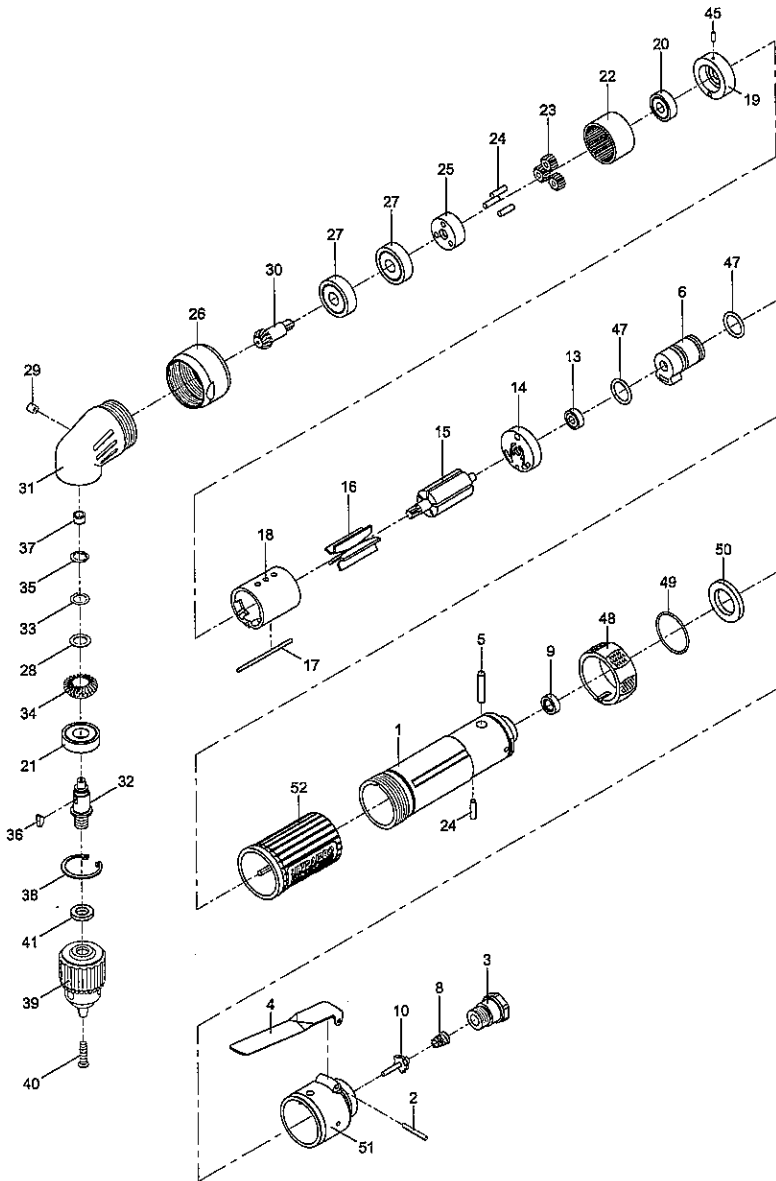


PARTS BREAKDOWN

66135



Ref. #	Item #	DESCRIPTION	QTY
1	RS113501	Motor Housing	1
2	RS2871R02	Spring Pin	1
3	RS2871R03	Air Inlet	1
4	RS113504	Throttle Lever	1
5	RS113505	Pin	1
6	RS113506	Reverse Valve	1
8	RS2871R08	Spring	1
9	RS2871R09	Rubber Spacer	1
10	RS113510	Valve Stem	1
13	RS30516	Ball Bearing	1
14	RS113514	Rear End Plate	1
15	RS78715	Rotor	1
16	RS78716	Rotor Blade	5
17	RS78717	Pin	1
18	RS78718	Cylinder	1
19	RS113519	Front End Plate	1
20	RS30524	Ball Bearing	1
21	RS227B25	Ball Bearing	1
22	RS78722	Internal Gear	1
23	RS78723	Planet Gear	3
24		Pin (Incl. w/ #25)	4
25	RS78725A	Cage Assembly w/Pins	1
26	RS181026	Lock Nut	1
27	RS29120	Ball Bearing	2
28	RS181028	Washer	1
29	RS181029	Oil Cap	1
30	RS181030	Bevel Gear	1
31	RS181031	Angle Housing(Incl. #29)	1
32	RS181032	Spindle	1
33	RS181033	Wave Washer	1
34	RS113534	Bevel Gear	1
35	RS181035	Retaining Ring	1
36	RS181036	Key	1
37	RS181037	Bushing	1
38	RS181038	Retaining Ring	1
39	RS181039	3/8" Industrial Keyed Chuck	1
40	RS24035	Screw	1
41	RS79429N	Washer	1
45	RS188031	Spring Pin	1
47	RS2871R47	O-Ring	2
48	RS113548	Reversing Valve Knob	1
49	RS2871R49	O-Ring	1
50	RS113550	Muffler Material	1
51	RS113551	Rear Cover	1
52	RS113552UP	Rubber Grid	1
Not Shown	RS181039K	Chuck Key Only	1

PLEASE REVIEW ALL WARNING INSTRUCTIONS PRIOR TO OPERATION. SAVE THIS MANUAL FOR FUTURE REFERENCE.

66135: 3/8" Right Angle Air Drill with Keyed Chuck

REF. #	ITEM #	DESCRIPTION	QTY.	PURCHASE PRICE
1	RS113501	Motor Housing	1	\$21.69
2	RS2871R02	Spring Pin	1	\$1.00
3	RS2871R03	Air Inlet	1	\$4.35
4	RS113504	Throttle Lever	1	\$2.17
5	RS113505	Pin	1	\$2.17
6	RS113506	Reverse Valve	1	\$5.64
8	RS2871R08	Spring	1	\$1.00
9	RS2871R09	Rubber Spacer	1	\$1.27
10	RS113510	Valve Stem	1	\$1.41
13	RS30516	Ball Bearing	1	\$2.14
14	RS113514	Rear End Plate	1	\$4.88
15	RS78715	Rotor	1	\$9.10
16	RS78716	Rotor Blade	5	\$1.06
17	RS78717	Pin	1	\$1.00
18	RS78718	Cylinder	1	\$9.89
19	RS113519	Front End Plate	1	\$5.96
20	RS30524	Ball Bearing	1	\$1.94
21	RS227B25	Ball Bearing	1	\$5.47
22	RS78722	Internal Gear	1	\$4.42
23	RS78723	Planet Gear	3	\$2.83
24		Pin (Incl. w/ #25)	4	
25	RS78725A	Cage Assembly w/Pins	1	\$2.26
26	RS181026	Lock Nut	1	\$7.06
27	RS29120	Ball Bearing	2	\$4.96
28	RS181028	Washer	1	\$1.00
29	RS181029	Oil Cap	1	\$1.00
30	RS181030	Bevel Gear	1	\$7.55
31	RS181031	Angle Housing(Incl. #29)	1	\$5.75
32	RS181032	Spindle	1	\$4.12
33	RS181033	Wave Washer	1	\$1.00
34	RS113534	Bevel Gear	1	\$10.87
35	RS181035	Retaining Ring	1	\$1.00
36	RS181036	Key	1	\$1.00
37	RS181037	Bushing	1	\$1.00
38	RS181038	Retaining Ring	1	\$1.00
39	RS181039	3/8" Industrial Keyed Chuck	1	\$27.90
40	RS24035	Screw	1	\$1.00
41	RS79429N	Washer	1	\$1.09
45	RS188031	Spring Pin	1	\$1.00
47	RS2871R47	O-Ring	2	\$1.00
48	RS113548	Reversing Valve Knob	1	\$1.41
49	RS2871R49	O-Ring	1	\$1.27
50	RS113550	Muffler Material	1	\$1.00
51	RS113551	Rear Cover	1	\$3.47
52	RS113552UP	Rubber Grip	1	\$7.16
Not Shown	RS181039K	Chuck Key Only	1	