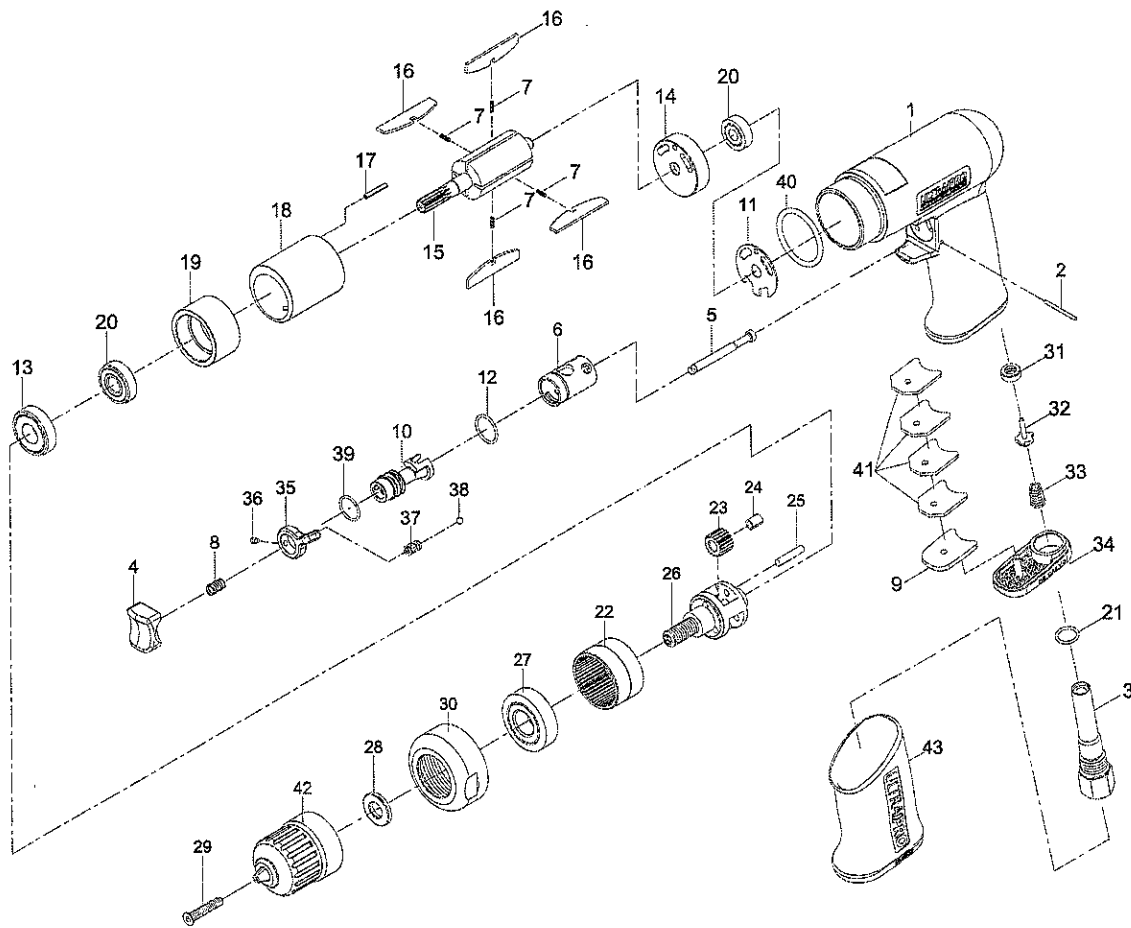


PARTS BREAKDOWN

66134



| Ref. # | Item # | DESCRIPTION | QTY |
|--------|------------|------------------------------------|-----|
| 1 | RS113401UP | Motor Housing | 1 |
| 2 | RS282702 | Pin | 1 |
| 3 | RS282703 | Air Inlet | 1 |
| 4 | RS282704 | Trigger | 1 |
| 5 | RS282705 | Valve Stem Set | 1 |
| 6 | RS282706 | Reverse Bushing | 1 |
| 7 | | Spring (Incl. w/ #16) | 4 |
| 8 | RS79408N | Valve Spring | 1 |
| 9 | RS282709 | Muffler | 1 |
| 10 | RS282710 | Reverse Valve | 1 |
| 11 | RS282711 | Motor Gasket | 1 |
| 12 | RS24009 | O-Ring | 1 |
| 13 | RS227B25 | Ball Bearing | 1 |
| 14 | RS282714 | Rear End Plate | 1 |
| 15 | RS188915 | Rotor | 1 |
| 16 | RS182716S | Rotor Blade (4 pack w/ #7 Springs) | 1 |
| 17 | RS282717 | Spring Pin | 1 |
| 18 | RS182718 | Cylinder | 1 |
| 19 | RS188919 | Front End Plate | 1 |
| 20 | RS108A12 | Ball Bearing | 2 |
| 21 | RS76209 | O-Ring | 1 |
| 22 | RS188922 | Internal Gear | 1 |

| Ref. # | Item # | DESCRIPTION | QTY |
|--------|------------|--------------------------------|-----|
| 23 | RS188923 | Planet Gear | 3 |
| 24 | | Oilless Bearing (incl. w/ #23) | 3 |
| 25 | RS182725 | Pin | 3 |
| 26 | RS188926 | Work Spindle | 1 |
| 27 | RS21109 | Ball Bearing | 1 |
| 28 | RS182729 | Washer | 1 |
| 29 | RS288929 | Screw | 1 |
| 30 | RS182732 | Clamp Nut | 1 |
| 31 | RS24050 | Valve Seat | 1 |
| 32 | RS24051 | Valve | 1 |
| 33 | RS24052 | Spring | 1 |
| 34 | RS282737 | Exhaust Diffuser | 1 |
| 35 | RS282742 | Reverse Lever | 1 |
| 36 | RS24036 | Set Screw | 1 |
| 37 | RS24029 | Spring | 1 |
| 38 | RS24030 | Steel Ball | 1 |
| 39 | RS24023 | O-Ring | 1 |
| 40 | RS282748 | Decoration Ring | 1 |
| 41 | RS282747 | Muffler | 4 |
| 42 | RS188935 | 3/8" Keyless Chuck | 1 |
| 43 | RS113443UP | Rubber Grip | 1 |

PLEASE REVIEW ALL WARNING INSTRUCTIONS PRIOR TO OPERATION. SAVE THIS MANUAL FOR FUTURE REFERENCE.

66134: 3/8" Reversible Air Drill with Keyless Chuck

| REF. # | ITEM # | DESCRIPTION | QTY. | PURCHASE PRICE |
|--------|------------|------------------------------------|------|----------------|
| 1 | RS113401UP | Motor Housing | 1 | \$41.21 |
| 2 | RS282702 | Pin | 1 | \$1.00 |
| 3 | RS282703 | Air Inlet | 1 | \$4.88 |
| 4 | RS282704 | Trigger | 1 | \$1.00 |
| 5 | RS282705 | Valve Stem Set | 1 | \$2.36 |
| 6 | RS282706 | Reverse Bushing | 1 | \$4.88 |
| 7 | | Spring (Incl. w/ #16) | 4 | |
| 8 | RS79408N | Valve Spring | 1 | \$1.00 |
| 9 | RS282709 | Muffler | 1 | \$1.00 |
| 10 | RS282710 | Reverse Valve | 1 | \$5.43 |
| 11 | RS282711 | Motor Gasket | 1 | \$1.00 |
| 12 | RS24009 | O-Ring | 1 | \$1.00 |
| 13 | RS227B25 | Ball Bearing | 1 | \$5.47 |
| 14 | RS282714 | Rear End Plate | 1 | \$2.71 |
| 15 | RS188915 | Rotor | 1 | \$9.11 |
| 16 | RS182716S | Rotor Blade (4 pack w/ #7 Springs) | 1 | \$3.09 |
| 17 | RS282717 | Spring Pin | 1 | \$1.00 |
| 18 | RS182718 | Cylinder | 1 | \$10.30 |
| 19 | RS188919 | Front End Plate | 1 | \$3.66 |
| 20 | RS108A12 | Ball Bearing | 2 | \$7.52 |
| 21 | RS76209 | O-Ring | 1 | \$1.00 |
| 22 | RS188922 | Internal Gear | 1 | \$4.55 |
| 23 | RS188923 | Planet Gear | 3 | \$3.87 |
| 24 | | Oilless Bearing (incl. w/ #23) | 3 | |
| 25 | RS182725 | Pin | 3 | \$1.00 |
| 26 | RS188926 | Work Spindle | 1 | \$13.62 |
| 27 | RS21109 | Ball Bearing | 1 | \$5.32 |
| 28 | RS182729 | Washer | 1 | \$1.00 |
| 29 | RS288929 | Screw | 1 | \$1.09 |
| 30 | RS182732 | Clamp Nut | 1 | \$9.11 |
| 31 | RS24050 | Valve Seat | 1 | \$1.00 |
| 32 | RS24051 | Valve | 1 | \$1.09 |
| 33 | RS24052 | Spring | 1 | \$1.00 |
| 34 | RS282737 | Exhaust Diffuser | 1 | \$1.00 |
| 35 | RS282742 | Reverse Lever | 1 | \$5.42 |
| 36 | RS24036 | Set Screw | 1 | \$1.00 |
| 37 | RS24029 | Spring | 1 | \$1.00 |
| 38 | RS24030 | Steel Ball | 1 | \$1.00 |
| 39 | RS24023 | O-Ring | 1 | \$1.00 |
| 40 | RS282748 | Decoration Ring | 1 | \$1.00 |
| 41 | RS282747 | Muffler | 4 | \$1.00 |
| 42 | RS188935 | 3/8" Keyless Chuck | 1 | \$25.68 |
| 43 | RS113443UP | Rubber Grip | 1 | \$2.71 |