

Blue-Point<sup>®</sup>

ATTN:

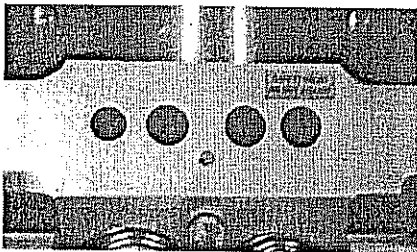
## PARTS BREAKDOWN AND OPERATING MANUAL

MODEL # RACEJACK  
1.5 Ton Capacity  
Aluminum Service Jack

### DESCRIPTION

Your aluminum RACEJACK is a self-contained device designed for lifting, but not sustaining, a partial vehicular load. It consists of a frame with wheels and swivel casters supporting a mechanism that actuates a pivoting lift arm equipped with a saddle. It is designed for use by professional auto mechanics.

### IMPORTANT! BEFORE USING THIS JACK:



Air may become trapped in the hydraulic system during transit. To purge air:

1. Open release valve by turning handle counter-clockwise.
2. Pump handle rapidly 8 full strokes. This will expel air that may have entered oil passages during transit.
3. Close release valve by rotating handle clockwise and pump handle.
4. If lift arm raised, jack is ready for use. If not, repeat this procedure.

### INSPECTION:

Visual inspection should be made before each use of the jack, checking for leaking hydraulic fluid and damaged, loose or missing parts. Each jack must be inspected by a manufacturer's repair facility immediately, if subjected to an abnormal load or shock. Any jack which appears to be damaged in any way, found to be badly worn, or operates abnormally, **MUST BE REMOVED FROM SERVICE** until necessary repairs are made by a manufacturer's authorized repair facility. It is recommended that an annual inspection of the jack be made by a manufacturer's authorized repair facility and that any defective parts, decals or warning labels be replaced with manufacturer's specified parts. A list of authorized repair facilities is available from the manufacturer.

## ! WARNING



THIS IS A LIFTING DEVICE ONLY. DO NOT MOVE OR DOLLY THE VEHICLE WHILE ON THE JACK. IMMEDIATELY AFTER LIFTING, SUPPORT THE VEHICLE WITH APPROPRIATE MEANS.

DO NOT OVERLOAD. OVERLOADING CAN CAUSE DAMAGE TO OR FAILURE OF THE JACK.

LIFT ONLY ON AREAS OF THE VEHICLE AS SPECIFIED BY THE VEHICLE MANUFACTURER.

CENTER LOAD ON SADDLE PRIOR TO LIFTING. OFF-CENTER LOADS MAY CAUSE DAMAGE TO JACK, LOSS OF LOAD, PROPERTY DAMAGE, PERSONAL OR FATAL INJURY.

THIS JACK IS DESIGNED FOR USE ONLY ON HARD LEVEL SURFACES CAPABLE OF SUSTAINING THE LOAD. USE ON OTHER THAN HARD LEVEL SURFACES CAN RESULT IN JACK INSTABILITY AND POSSIBLE LOSS OF LOAD.

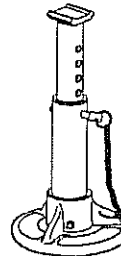
NO ALTERATIONS TO THE JACK SHALL BE MADE.

READ, STUDY AND UNDERSTAND THE OPERATING MANUAL PACKED WITH THIS JACK BEFORE OPERATING.

FAILURE TO HEED THESE WARNINGS MAY RESULT IN LOSS OF LOAD, DAMAGE TO JACK, AND/OR FAILURE RESULTING IN PROPERTY DAMAGE, PERSONAL OR FATAL INJURY.

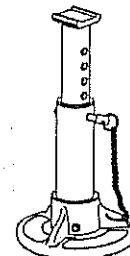
## ! WARNING

FOR YOUR SAFETY AND TO PREVENT INJURY:



Use Service Jack for lifting purposes **ONLY**.

Always support vehicle with jack stands.



## SPECIFICATIONS:

Low Height .....	3-15/16"
High Height .....	18-5/16"
Saddle Diameter .....	5" x 5"
Handle Length (2 piece).....	47-1/2"
Base Length .....	25-1/8"
Chassis Width.....	6-1/4"
Rear Caster Width .....	11-3/16"
Wheel Width .....	5-3/16"
Weight.....	39.66 lbs.

## OPERATING INSTRUCTIONS:

**IMPORTANT:** Before attempting to raise a vehicle, check vehicle service manual for recommended lifting surfaces.

1. To raise load: Close release valve tightly (by turning handle clockwise). **DO NOT OVERTIGHTEN.** Position jack under load so that saddle will contact load firmly and load is centered so it cannot slip. Raise saddle until the saddle meets the lift point on the vehicle. Once again, check to see that saddle is correctly positioned. Then, pump handle to raise load to desired height. Place jack stands of appropriate capacity under the vehicle. **DO NOT CRAWL UNDER VEHICLE WHILE LIFTING VEHICLE OR PLACING OR REMOVING JACK STANDS!** Place jack stands at vehicle manufacturer's recommended lift areas that provide stable support for the raised vehicle.
2. To lower load: Open release valve **VERY SLOWLY** (by turning handle counterclockwise). When release valve is opened, saddle and load will be lowered. Lower the vehicle slowly so as not to shock load the jack stands. Once repairs are completed, use jack handle to raise vehicle enough to remove jack stands. Lower vehicle very slowly.

**CAUTION:** Keep hands or feet away from the hinge mechanism of the jack.

## MAINTENANCE:

**IMPORTANT:** When adding or replacing oil, always use a quality hydraulic oil. **DO NOT** use brake fluid, alcohol, glycerine, detergent motor oil, or dirty oil as improper fluid can cause serious internal damage to jack.

To add oil: With saddle fully lowered and jack on level ground, remove Breather from oil filler plug hole (see page 1). Oil should be filled to within 1/2" of bottom of oil filler plug hole. If low, add oil as needed.

Maintenance and Inspection: The owner and/or user must maintain and inspect the jack in accordance with the manufacturer's instructions.

## LUBRICATION:

All moving joints require lubrication occasionally. Remove handle and lightly grease the lower end of handle where it rotates in the handle socket. Oil all lift arm linkages, front wheels and rear casters.

## OWNER/USER RESPONSIBILITY:

The owner and/or user must have a thorough understanding of the manufacturer's operating instructions and warnings before using this jack. Personnel involved in the use and operation of equipment shall be careful, competent, trained, and qualified in the safe operation of the equipment and its proper use when servicing motor vehicles and their components. Warning information should be emphasized and understood. If the operator is not fluent in English, the manufacturer's instructions and warning shall be read to and discussed with the operator in the operator's native language by the purchaser/owner, making sure that the operator comprehends its contents.

Owner and/or user must study and maintain for future reference the manufacturer's instructions. Owner and/or user is responsible for keeping all warning labels and instruction manuals legible and intact. Replacement labels and literature are available from the manufacturer.

PROBLEM	SOLUTION				
	Jack will not lift load	Jack will not hold load or handle rises	Jack will not lift to it's full height	Jack will not lower completely	Jack will not lift smoothly or jack feels spongy
✓					The release valve is not closed. Turn the valve clockwise tightly.
✓		✓			Low on oil. Refill the jack to the correct level of oil.
✓					Pump seals and back-up ring is defective. Clean oil passages, replace seals and renew oil. (Must be serviced by qualified service center)
		✓		✓	The hydraulic system is filled with air. Open the release valve, pump handle rapidly four (4) full strokes to purge air, close release valve.
			✓		Return spring is broken or linkages binding. Replace spring if broken. Grease pivot shaft, oil all lift arm linkages.
		✓			Discharge ball is not sealing hydraulic system and oil may be dirty. Manually flush hydraulic system by raising and lowering lift arm by hand. Open the release valve, as required to raise and lower the lift arm. Manually raise and lower lift arm.

### LIMITED WARRANTY...

**SNAP-ON® WARRANTS TO ITS CUSTOMERS THAT THE COMPANY'S SNAP-ON® BRANDED PRODUCTS ARE FREE FROM DEFECTS IN WORKMANSHIP AND MATERIALS.**

Snap-on® will repair or replace its Blue-Point® branded products which fail to give satisfactory service due to defective workmanship or materials, based upon the terms and conditions of the following described warranty plans attributed to that specific product. This product carries a 2 year warranty. During this warranty period, Snap-on® will repair or replace at our option any part or unit which proves to be defective in material or workmanship.

#### Other important warranty information...

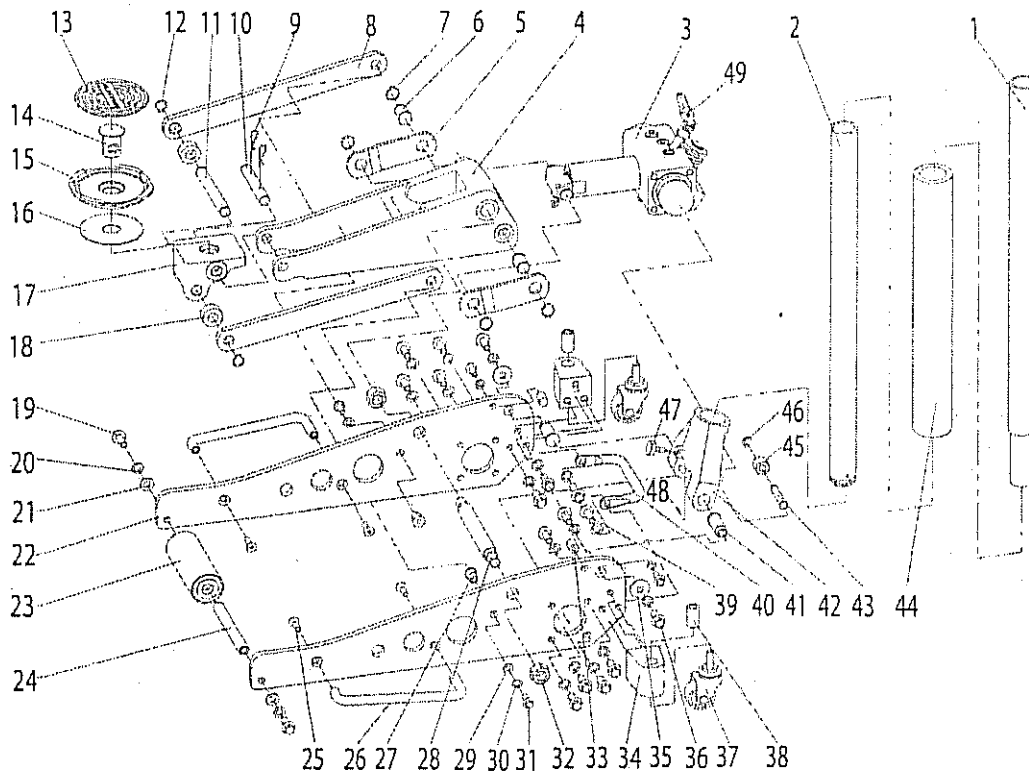
This warranty does not cover damage to equipment or tools arising from alteration, abuse, misuse, damage and does not cover any repairs or replacement made by anyone other than Snap-on® or its authorized warranty service centers. The foregoing obligation is Snap-on's® sole liability under this or any implied warranty and under no circumstances shall we be liable for any incidental or consequential damages.

**Note:** Some states do not allow the exclusion or limitation of incidental or consequential damages, so the above limitation or exclusion may not apply to you. This warranty gives you specific legal rights and you may also have other rights which vary from state to state. Repair kits and replacement parts are available for many of Snap-on® products regardless of whether or not the product is still covered by a warranty plan.

For warranty service information, call toll-free 1-888-448-6746 , or contact your local Blue-Point® warranty center on the enclosed list.

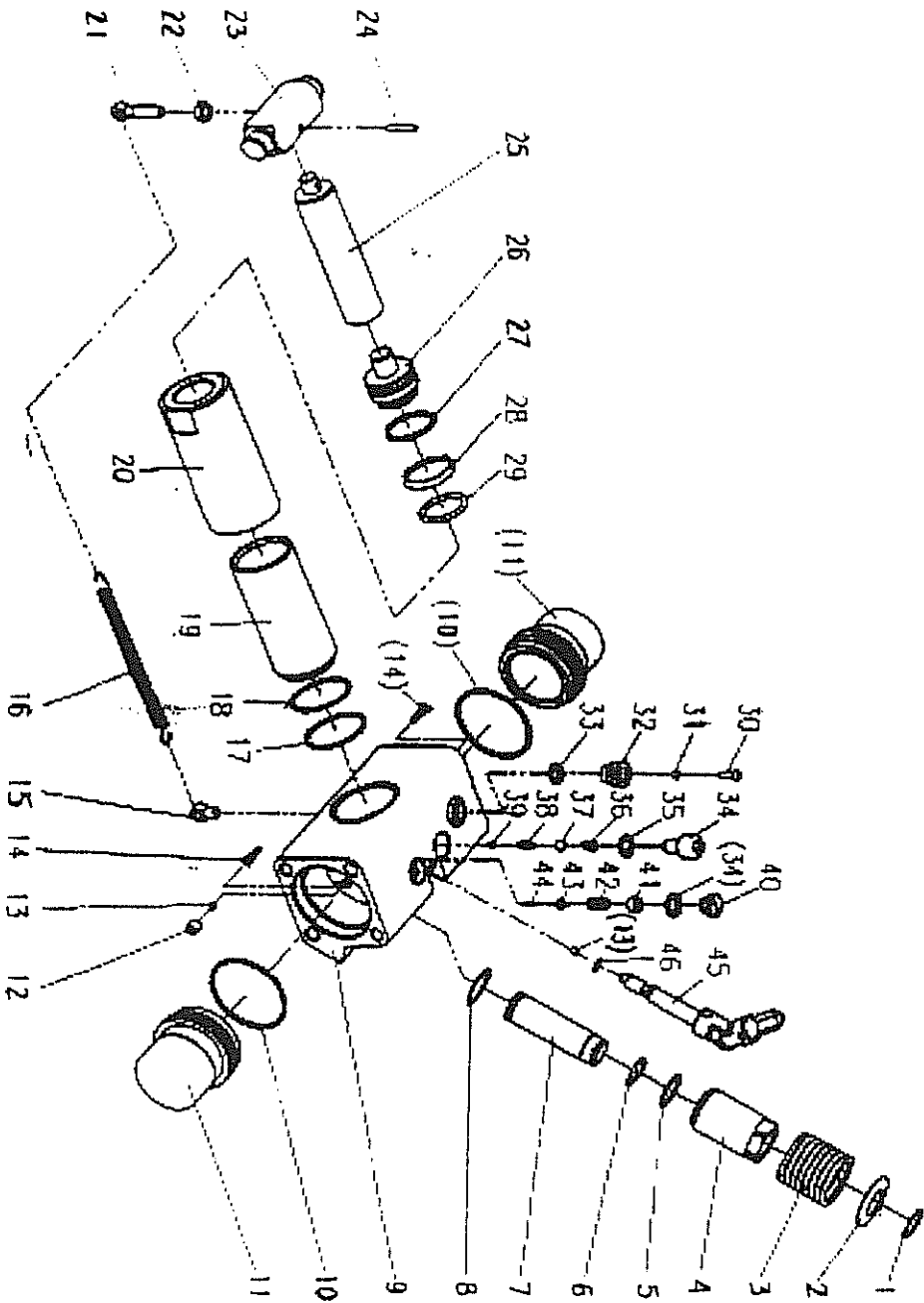
Blue-Point is a trademark of Snap-on Incorporated.  
 ©2004 Snap-on Incorporated. All Rights Reserved.  
 Snap-on, 2801 80th St., Kenosha, WI 53143

# RACEJACK 1.5 Ton Capacity Aluminum Service Jack



Item No.	Part No.	Description	Qty.	No.	Part No.	Description	Qty.
1	RSRJ1	Handle, Upper	1	25	RJ25*	Nut for Side Handle	4
2	RJ2	Handle, Lower	1	26	RJ26*	Side Handle	2
3	RSRJ3	Power Unit Assembly	1	27	RJ27*	Pin for Connecting Rod	2
4	RJ4*	Lifting Arm	1	28	RJ28*	Shaft for Lifting Arm	1
5	RJ5*	Return Rod	2	29	RJ29*	Plate Washer 8	2
6	RJ6*	Pin for Return Rod	2	30	RJ30*	Locker Washer 8	4
7	RJ7*	Spring Washer 19	4	31	RJ31*	Hex Nut M8 x 20	4
8	RJ8*	Connecting Rod	2	32	RJ32*	Locker Nut M8 x 20	2
9	RJ9*	Retaining Pin	2	33	RJ33	Location Block Assembly	2
10	RJ10*	Shaft for Saddle Base	1	34	RJ34*	Dog Ear	2
11	RJ11*	Shaft for Connecting Rod	1	35	RJ35*	Washer 10	2
12	RSRJ12	Spring Washer 16	2	36	RJ36*	Hex Bolt M10 x 25	2
13	RSRJ13	Rubber Pad	1	37	RSRJ37	Caster Assembly (incl. #38)	2
14	RJ14*	Saddle Shaft	1	38	RJ38*	Bolt for Caster Assembly	2
15	RJ15	Saddle	1	39	RJ39*	Hex Nut M10 x 30	2
16	RJ16*	Saddle Plate	1	40	RJ40*	Back Handle	1
17	RJ17*	Saddle Base	1	41	RJ41*	Shaft for Handle Yoke	2
18	RJ18*	Ring for Saddle Base Shaft	2	42	RJ42	Handle Yoke (including 43, 45, 46)	1
19	RJ19*	Hex Nut M10 x 25	14	43	RJ43*	Back Shaft for Handle Yoke	1
20	RJ20*	Locker Washer 10	20	44	RJ44	Bumper	1
21	RJ21*	Plate Washer 10	2	45	RJ45*	Pump Roller	1
22	RJ22*	Side Plate	2	46	RJ46*	Cotton Pin 8	1
23	RSRJ23	Front Wheel (including 19, 20, 21)	1	47	RSRJ47	Bolt for Handle Yoke	1
24	RSRJ24	Shaft for Front Wheel	1	48	RSRJ48	Roll Pin	1
				49	RJ49	Release Valve	1
					RJSK	Repair Kit for Hydraulic Unit	

Item



RSRJ3K - Repair Kit includes 1 each of #5, 6, 8, 17, 18, 27, 28, 29, 31, 33, 36, 37, 38, 39, 42, 43, 44, 46  
2 each of #10, 13, 14, 35

**5. REMOVE RIGHT SIDE PLATE**

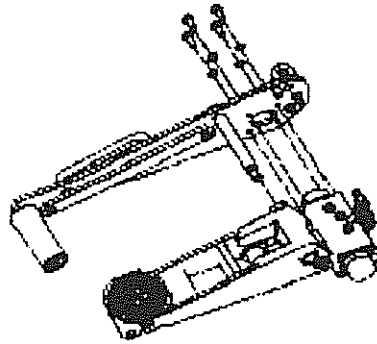


fig. 5

**6 REMOVE RETURN ROD**

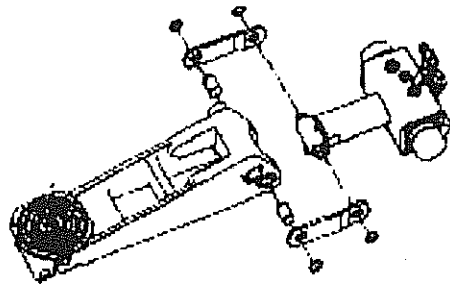


fig. 6

**B. ASSEMBLE**

1. ASSEMBLY OF RETURN ROD
2. ASSEMBLY OF RIGHT SIDE PLATE
3. ASSEMBLY OF LEFT SIDE PLATE
4. ASSEMBLY OF HANDLE YOKE
5. ASSEMBLY OF SHAFT OF CONNECTING ROD
6. ASSEMBLY OF BACK HANDLE

**3. REMOVE HANDLE YOKE**

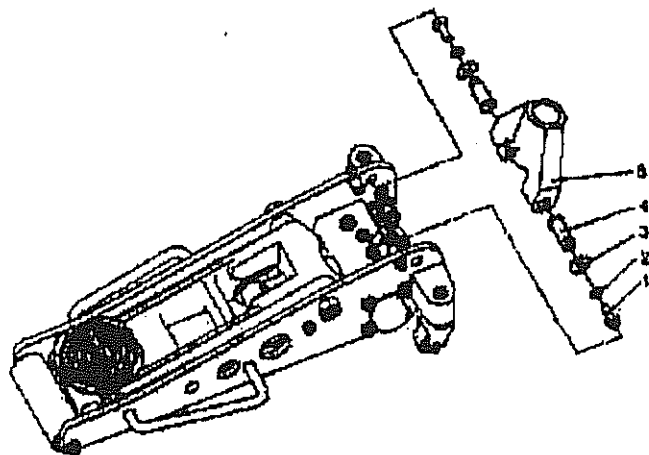


fig.3

**4. REMOVE LEFT SIDE PLATE**

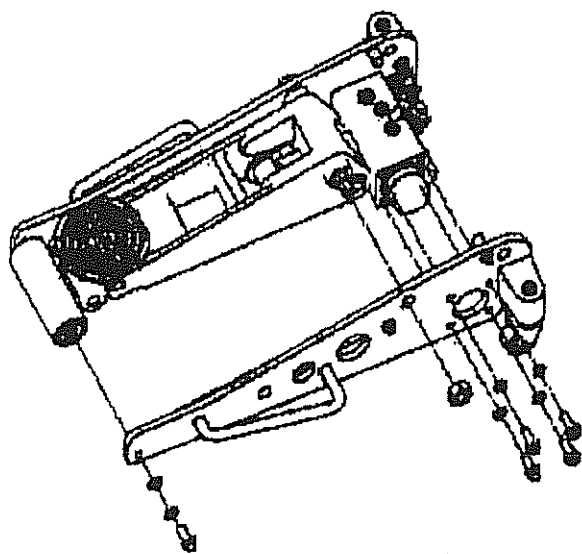


fig.4

## REPLACE PUMP UNIT

### A. REMOVING PUMP UNIT

#### 1. REMOVE BACK HANDLE

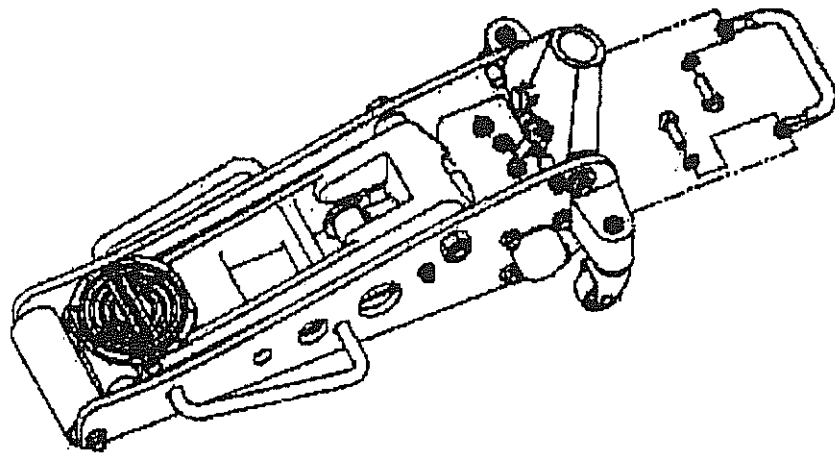


fig.1

#### 2. REMOVE SHAFT OF CONNECTING ROD

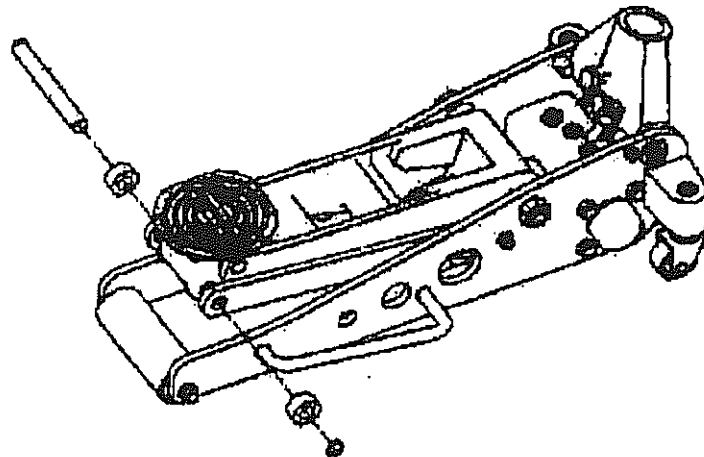


fig 2