



# TEMPLETON, KENLY & COMPANY

GARDNER ROAD and 16th STREET  
PHONE 312-343-0880

BROADVIEW, ILLINOIS 60153  
TWX 910-226-1955

## HYDRAULIC HAND JACKS

### REPAIR PARTS SHEET

1.5HJA & B

3 HJA & B

5 HJA & B

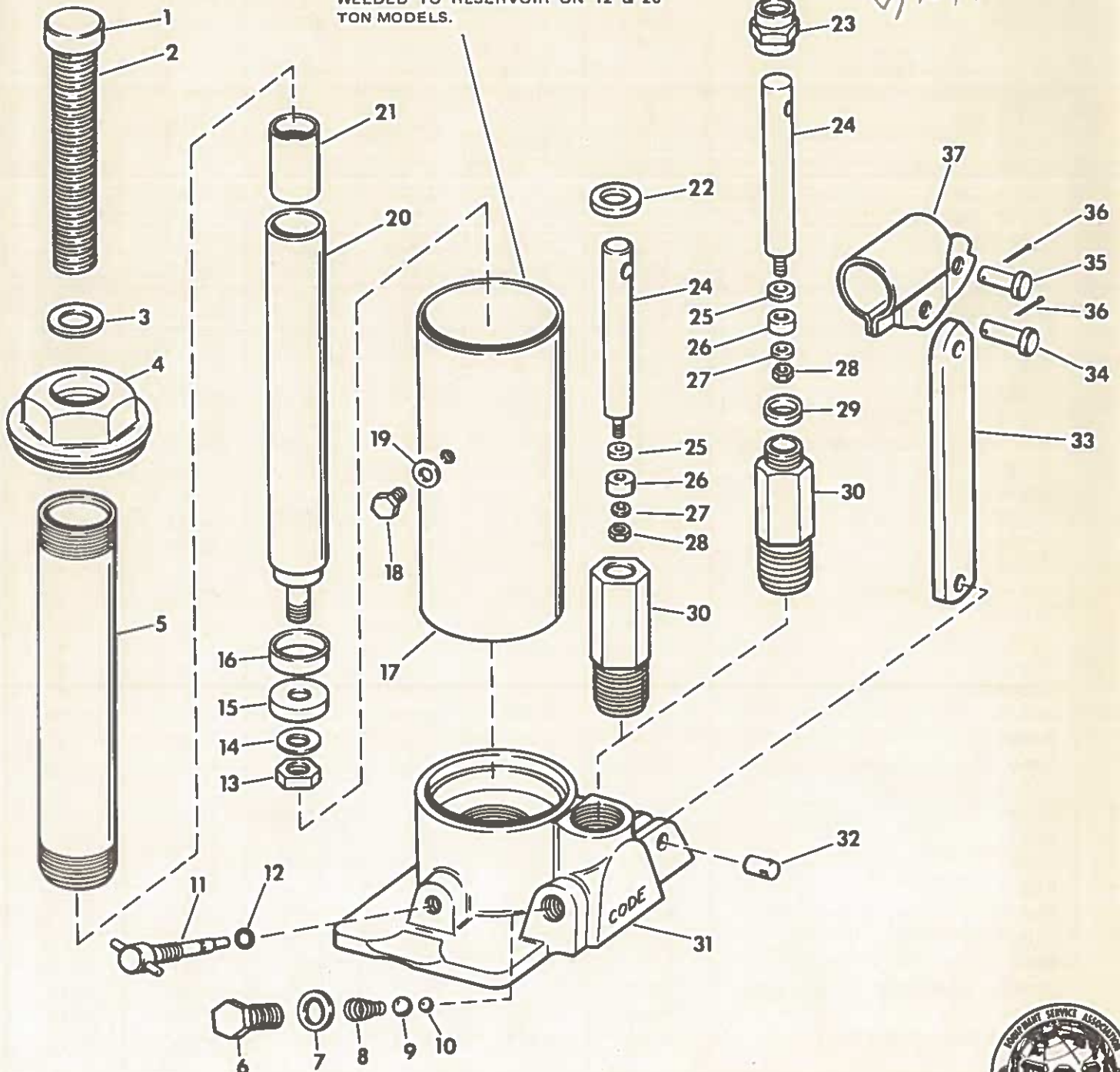
8HJA & B

12 HJA & B

20 HJA & B

NOTE  
CARRYING HANDLE IS INCLUDED AND  
WELDED TO RESERVOIR ON 12 & 20  
TON MODELS.

*REPAIR 18*



See reverse side for part numbers for ordering purposes.



# PARTS LIST FOR HYDRAULIC HAND JACKS

## GUARANTEE

Templeton, Kenly & Co., Broadview, Ill., guarantees its Products against defects in workmanship and materials for 90 days from date of delivery to the user. When question of warranty arises, the user should send his unit to the nearest simplex Authorized Service Depot for inspection, transportation prepaid and evidence of purchase date furnished.

If the difficulty comes under the terms of our guarantee, the Authorized Service Depot will repair or replace parts affected and return prepaid. Our guarantee does not cover ordinary wear and tear, abuse, misuse, overloading, altered products or use of improper fluid.



## TEMPLETON, KENLY & COMPANY

16TH & GARDNER RD., BROADVIEW, ILLINOIS

ITEM NO.	DESCRIPTION	ORDER NO.					
		1.5HJA&B	3HJA&B	5HJA&B	8HJA&B	12HJA&B	20HJA&B
1	Saddle	----	6029	6030	6030	6031	6032
2	Screw	6025	6026	6027	6027	6028	----
3	"O" Ring	*	*	*	*	*	*
4	Cap (Early Series)	6055	6056	6057	6058	6059	6060
	Cap (Present Series)	9485	9486	9487	9488	9489	9490
5	Cylinder	6011	6012	6013	6013	6014	6015
6	Plug	6009	6009	6009	6009	6009	6009
7	Gasket	*	*	*	*	*	*
8	Spring *	6007	6007	6007	6007	6007	6007
9	5/16" Ball *	1701	1701	1701	1701	1701	1701
10	7/32" Ball *	6006	6006	6006	6006	6006	6006
11	Valve	6010	6010	6010	6010	6010	6010
12	"O" Ring	*	*	*	*	*	*
13	Nut	6046	6046	3878	3878	3882	3884
14	Washer	6043	3924	3927	3927	6044	6045
15	Cup	*	*	*	*	*	*
16	Ring	6033	9491	9492	9492	9493	6037
17	Reservoir (Early Series)	6047	6048	6049	6050	6051	6052
	Reservoir (Present Series)	9494	9495	9496	9497	9498	9499
18	Plug	6054	6054	6054	6054	6054	6054
19	Gasket	*	*	*	*	*	*
20	Plunger	6016	6017	6018	6018	6019	6020
21	Sleeve	6021	6022	6023	6023	6024	----
22	Wiper	*	*	*	*	*	*
23	Nut (Early Series)	6071	6071	6071	6071	6071	6071
24	Piston	9501	9501	9501	9501	9501	9501
25	Seal	*	*	*	*	*	*
26	Cup	*	*	*	*	*	*
27	Washer	*	*	*	*	*	*
28	Nut *	6068	6068	6068	6068	6068	6068
29	Packing	*	*	*	*	*	*
30	Pump (Incl. Items 22,24, 25,26,27 & 28)	9503	9503	9503	9503	9503	9503
31	Base	----- NOT AVAILABLE AS REPLACEMENT PART -----					
32	Pin	9504	9504	9504	9504	9504	9504
33	Link	6074	6074	6074	6074	6074	6074
34	Pin	6076	6076	6076	6076	6076	6076
35	Pin	6075	6075	6075	6075	6075	6075
36	Pin *	3773	3773	3773	3773	3773	3773
37	Beam	6072	6072	6072	6072	6072	6072
38	Handle Assembly (2 Pcs.)!	6077	6077	6077	6077	6077	6077
39	Decal * !	9505	9506	9507	9508	9509	9510
40	Repair Kit (Universal)	9511	9512	9513	9513	9514	9515

\* Indicates Items Included In Kit  
! Not Shown