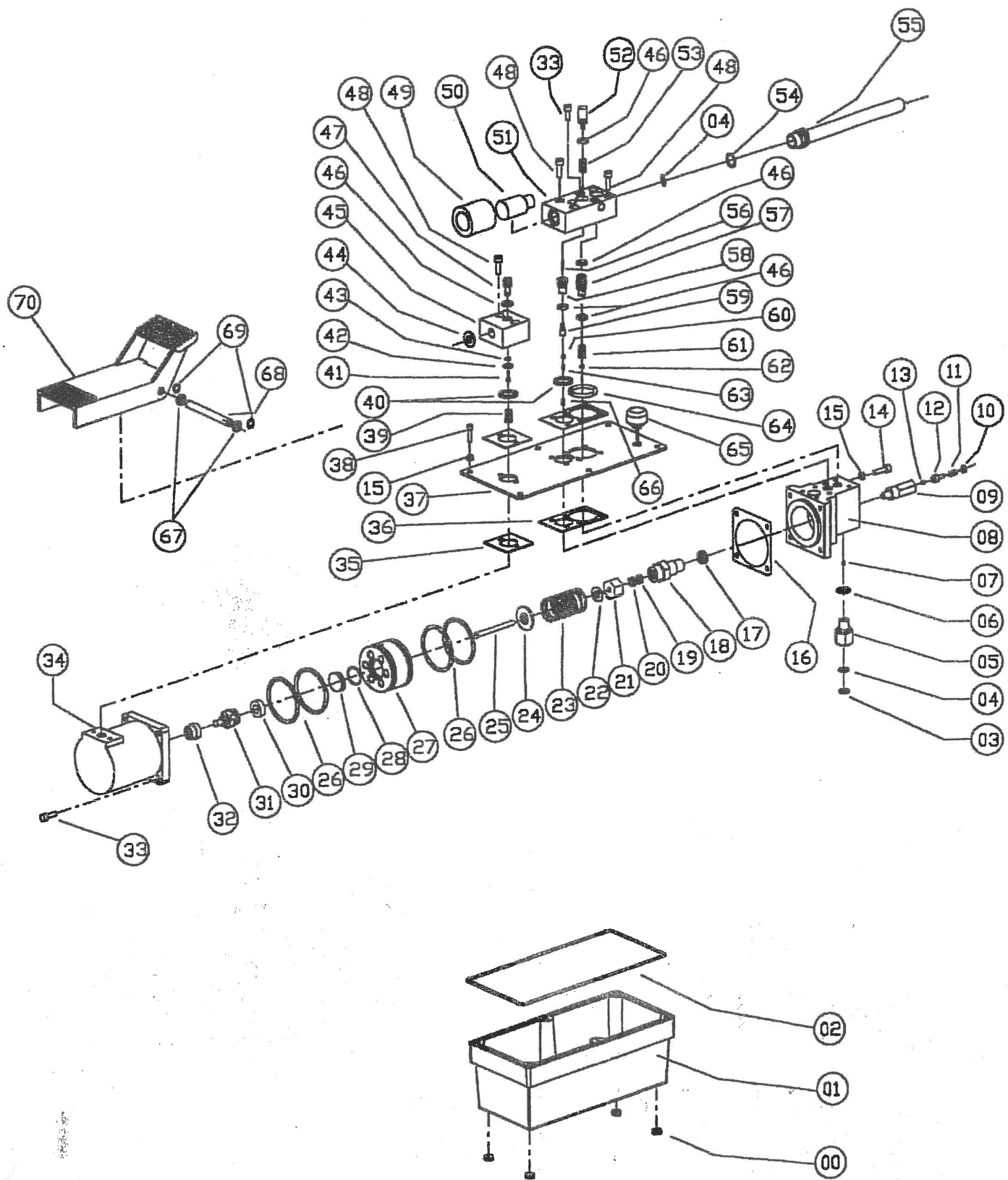


13. ESPLOSI E PARTI DI RICAMBIO

13.1 POMPA A PEDALE HPB



POMPA IDROPNEUMATICA MODELLO FC5964 / FC5965 / FC5966

N°	CODE	DENOMINAZIONE	Q.ta'	N°	CODE	DENOMINAZIONE	Q.ta'
01	70.01 ROTARY	TANK	1	41	70.20	CASING PACKING	1
02	65.12 pl	SEAL FOR TANK	1	42	6E.02	SEAL	1
03	4B.01	RING SEEGER	1	43	70.21 ROTARY	AIR BLOCK	1
04	12A.01	FILTER	1	44	6A.23	SEAL	1
05	70.03	FILTER FASTENING	1	45	70.53	NEEDLE	5
06	3B.01	ROVE BONDED	1	46	1C.21	SCREW	1
07	5A.03	SPHERE	1	47	9A.02	SILENCER IN RUBBER	6
08	70.04	BODY PUMP	1	48	9A.01	SILENCER IN NYLON	1
09	70.61	BODY MAX PRESSION VALVE	1	49	70.25 ROTARY	OIL BLOCK	1
10	70.61.3	SPRING STOP	1	50	70.19	OIL UNLOADED PIN	1
11	70.61.2	SPRING FOR MAX PRESSION VALVE	1	51	70.50	SPRING FOR OIL UNLOADED PIN	1
12	70.61.1	SPRING GUIDE	1	52	12A.05	FILTER	1
13	5A.02	SPHERE	1	53	8A.18	PLUG	1
14	1C.16	SCREW	1	54	70.16	UNLOADED NEEDLE	1
15	3C.01	ROVE	1	55	70.31	CASING FOR NO RETURN VALVE	1
16	6M.03 pl	SEAL IN PAPER	7	56	70.18	UNLOADED CASING	1
17	3B.03	ROVE BONDED	1	57	70.15	UNLOADING PIN	1
18	70.05P3	PLUNGER CASING	1	58	5A.01	SPHERE	1
19	6E.06 pl	SEAL	1	59	70.42	SPRING FOR NO RETURN VALVE	1
20	70.06P2	CASING PLUG	1	60	5A.06	SPHERE	1
21	6S.02 pl	SEAL	1	61	70.13	GUIDE SPHERE	1
22	70.14A	SPRING FOR CASING PLUNG	1	62	6A.20	SEAL	1
23	70.07K3	CASING CUP	1	63	8A.01	PLUG	1
24	70.08K3	PLUNGER	1	63b	8A.05	PLUG WITH ROD	1
25	6R.01 pl	SEAL	1	64	70.26	SPRING	1
26	6A.06 pl	SEAL	2	65	3H.01	ROVE	1
27	70.22	PLUG	1	66	70.28	PEDAL PIN	2
28	70.09	PISTON	1	67	4C.01	RING BENZING	1
29	6O.01 pl	SEAL	1	68	70.27	PEDAL	2
30	70.10	REVERSER PISTON	1				1
31	6S.06 pl	REVERSER SEAL	1				
32	1C.20	SCREW	1				
33	70.12	CYLINDER	6				
34	6M.01 pl	SEAL IN PAPER	1				
35	6M.02 pl	SEAL IN PAPER	2				
36	70.17	COVER TANK	2				
37	1B.01	SCREW	1				
38	70.47A	SPRING FOR AIR BLOCK	6				
39	6A.18 pl	SEAL	1				
40	1C.04	SCREW	2				

Part No 70.300 Pump Repair Key

70.18C
70.300
Pump Repair Key