

PARTS LIST & INSTRUCTIONS FOR J-2 HYDRAULIC FLOOR JACK (2-TON CAPACITY) MODEL NO. P-908

HOW THE JACK OPERATES, To Position—Compress left end of Lever No. 9615, Fig. No. 3, raise or lower handle until trip bar engages one of slots in frame making rigid connection. This permits jack to be balanced and pivoted on the casters.

To PUMP OR RAISE JACK—The control handle remains in neutral position.

To LOWER—Compress right end of Lever No. 9615, Fig. No. 3, grip until load and rest plate drop.

REFILLING JACK WITH OIL—Proceed as follows:

1—Lower rest plate.

2—Remove oil filler plug. See Fig. No. 1.

3—Fill cylinder with clean hydraulic oil until just visible in oil filler hole. (Do not fill beyond this point.)

4—Raise jack rest plate to high position by pumping jack handle.

5—Replace filler plug and gasket with rest plate still in the high position.

To drain oil or clean screen, remove large plug under cylinder (plug must be tight). See Fig. No. 1.

CAUTION—This is a precision unit—prolong its service, observe these precautions.

1—Use clean Manley Hydraulic or S.A.E. No. 10 oil in cylinder. (Never use brake fluid.)

2—Keep oil screen in cylinder clean.

3—Keep jack clean, especially plated ram and pump plunger.

4—Lubricate all moving parts.

Use of brake fluid voids guarantee.

HANDLE ADJUSTMENT: If it becomes necessary to replace handle or handle parts, the handle unit should be checked and adjusted as shown in Fig. 3, before putting it in jack.

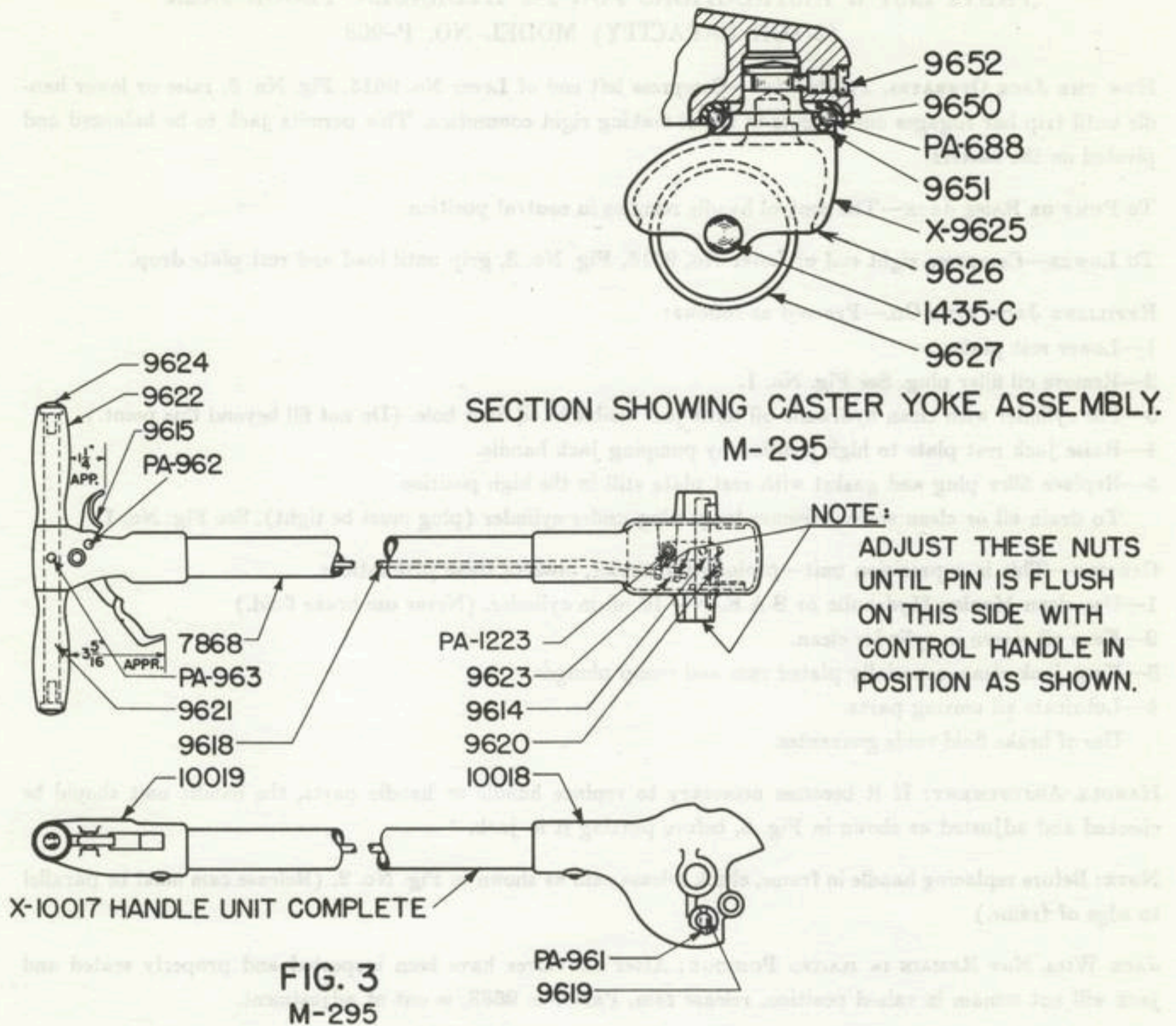
NOTE: Before replacing handle in frame, check release cam as shown in Fig. No. 2. (Release cam must be parallel to edge of frame.)

JACK WILL NOT REMAIN IN RAISED POSITION: After all valves have been inspected and properly seated and jack will not remain in raised position, release cam, Part No. 9638, is out of adjustment.

To ADJUST: Back off nut, Part No. PA-1093, Fig. No. 2, approximately $\frac{1}{4}$ turn (counterclockwise). (This nut can be reached from bottom of jack.) Raise and lower handle, and if jack should start to lower when handle is raised or lowered, nut, Part No. PA-1093, Fig. No. 2, will have to be turned counter clockwise until jack remains in raised position when handle is raised or lowered.

JACK WILL NOT LOWER: If the jack will not lower, the release cam, Part No. 9638, is out of adjustment.

To ADJUST: Turn nut, Part No. PA-1093, Fig. No. 2, in a clockwise direction until it comes in contact with release cam, Part No. 9638.

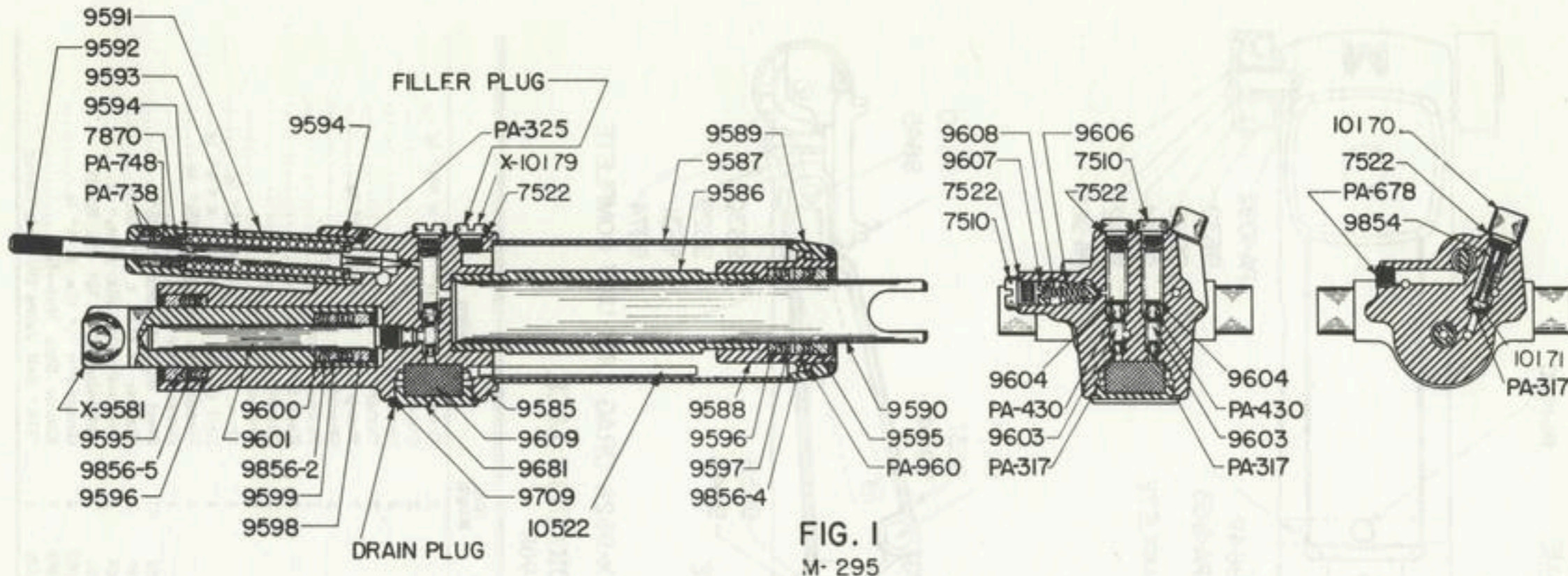


**PARTS LIST FOR J-2 HYDRAULIC JACK
MODEL NO. P-908**

Part No.	No. Req'd	Description	Part No.	No. Req'd	Description
X-10017	1	Handle Unit Complete	9622	2	Handle
7868	1	Handle 1½" Steel Tubing 35¾" lg....	9623	1	Release Knuckle
9614	1	Release Bell Crank	9624	2	Handle Retainer
9615	1	Control Handle	10018	1	Handle Yoke
9618	1	Operating Rod .262" dia. x 41⅞" lg..	10019	1	Handle Head
9619	1	Pin ⅝" dia. x 4¾" lg.	PA-961	1	Groov-Pin ¼" dia. x 1" lg.....
9620	1	Tension Spring ⅝" O.D. x 1⅞" lg...	PA-962	1	Groov-Pin ⅝" dia. x 1¼" lg.....
9621	1	Handle Rod ⅝" dia. x 10⅞" lg.....	PA-963	1	Groov-Pin ¼" dia. x 1¼" lg.....
			PA-1223	1	Groov-Pin ⅝" x 2" lg.

(All Bolts, Nuts, Rivets and Washers must be ordered by size and thread.)

NOTE: Defective parts must be returned prepaid when making claim for credit. Always give catalog number and model number of jack when ordering parts. Prices on parts are subject to change without notice. No invoice rendered for less than 50 cents.



**PARTS LIST FOR J-2 HYDRAULIC JACK
MODEL NO. P-908**

Part No.	No. Req'd	Description
X-9580	1	Cylinder Unit Complete
X-9581	1	Speed Plunger Unit
7510	3	Valve Plug 1/2" dia. x 1 1/2" lg.....
7522	5	Valve Gasket 1/2" O.D.
7870	1	Compression Spring 1/2" I.D. x 1/8" lg.
9585	1	Pump and Valve Body
9586	1	Cylinder
9587	1	Oil Casing
9588	1	Packing Gland
9589	1	Cylinder End
9590	1	Ram 1 1/8" dia. x 10" lg.....
9591	1	Release Retainer 1" dia. x 5 1/4" lg....
9592	1	Release Stem
9593	1	Compression Spring 3/4" O.D. x 3 1/2" lg.
9594	2	Washer 3/4" O.D. x 1/8" thick.....
9595	2	Packing Nut 1 1/8" O.D. x 1/8" lg.....
9596	2	Male Packing Adapter 1 1/4" O.D. x 1/8" lg.
9597	1	Packing Spacer 1 1/2" O.D. x 1 1/2" lg...
9598	1	Packing Nut—1 1/8" O.D. x 1/8" lg....
9599	1	Male Packing Adapter 1 1/4" O.D. x 1/8" lg.
9600	1	Female Packing Adapter 1 1/8" O.D. x 1/8" lg.
9601	1	Power Plunger 1/2" dia. x 5 1/8" lg....
10170	1	By-Pass Plug
9603	2	Compression Spring 1/4" O.D. x 1 1/2" lg.
10522	2	Oil Tubes 1/4" O.D. x 4 1/4" lg.....

Part No.	No. Req'd	Description
9604	2	Compression Spring 1 1/2" O.D. x 1 1/8" lg.
9606	1	Valve 1/2" dia. x 3/4" lg.....
9607	1	Adjusting Screw 1/2" dia. x 1/2" lg...
9608	1	Compression Spring 1 1/2" O.D. x 1" lg.
9609	1	Oil Strainer
9681	1	Oil Strainer Plug
9709	1	Strainer Gasket 1 1/8" O.D. x 1/4" thick
9854	1	Compression Spring 1/2" I.D. x 1 3/8" lg.
10171	1	Spring End
PA-317	3	Steel Ball (Hardened)—1/4"
PA-430	2	Steel Ball (Hardened)—3/8"
PA-678	1	Pipe Plug—1/8"
PA-738	1	Set of Compression Packing 2-Rings —3/8" I.D.
PA-748	1	Washer 1 1/2" O.D. x 1/8" thick.....
PA-960	1	"O" Ring 2 1/2" O.D.
9856-2	1	Set Chevrans 1/8" I.D. 5-Solid Rings..
9856-4	1	Set Chevrans 1 1/8" I.D. 4-Solid Rings
9856-5	1	Set Chevrans 1 1/8" I.D. 4-Solid Rings
X-10179	1	Filler Plug Unit
PA-325	1	Gasket 1 1/2" O.D. x 1/8" Thick.....

Form M-295 (Rev. 2-28-49)

MANLEY DIVISION OF AMERICAN CHAIN & CABLE COMPANY, INC., YORK, PA.

NOTE:

RELEASE CAM TO BE PARALLEL TO EDGE OF FRAME

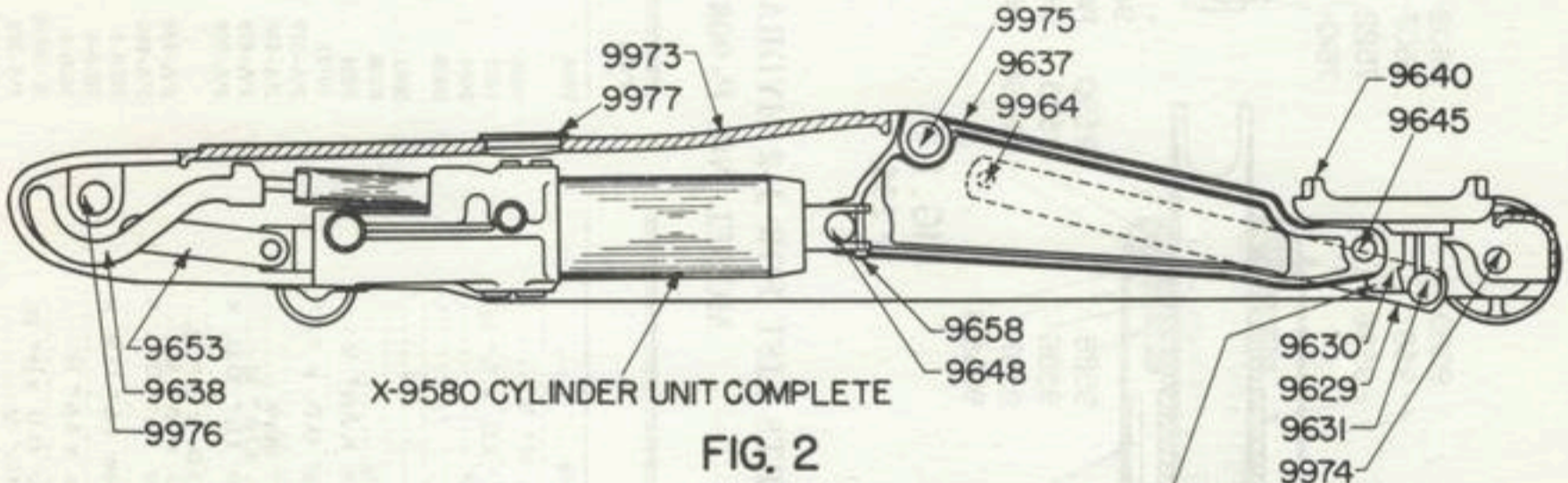
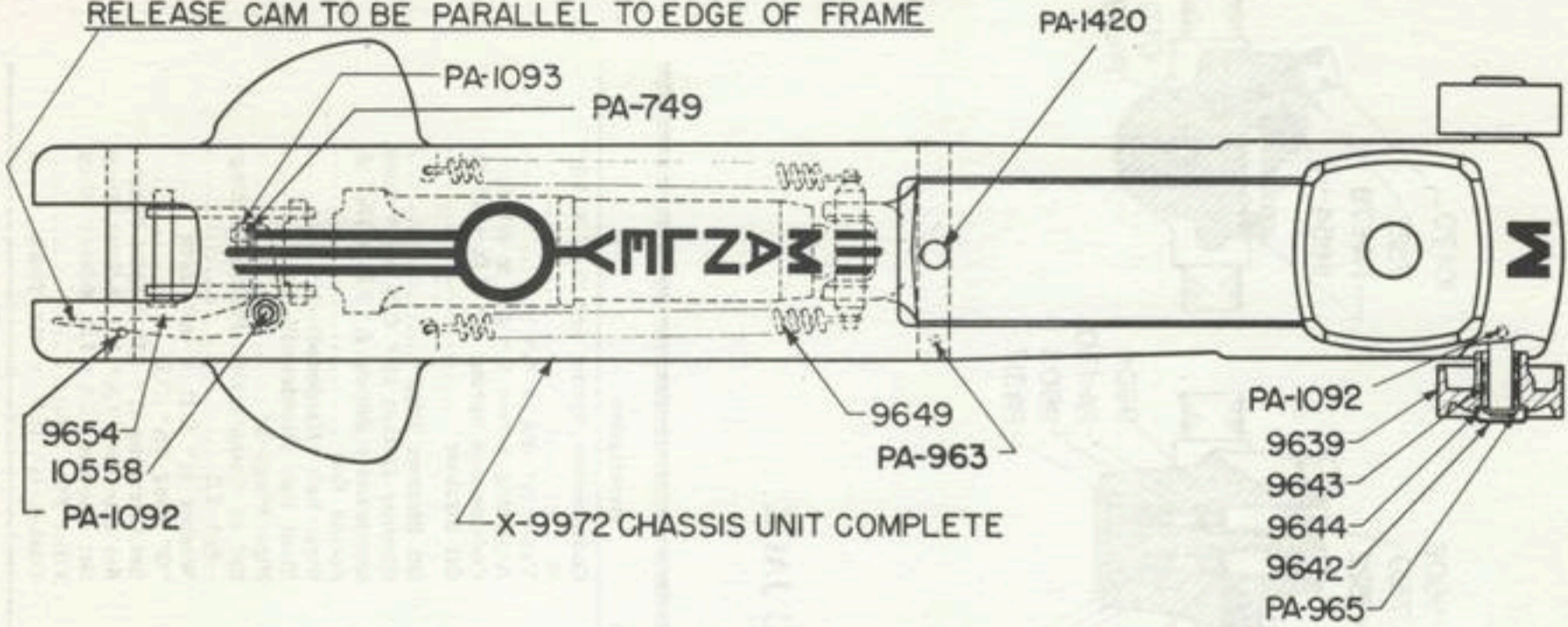


FIG. 2

M-295

X-9628 DRAG LINK UNIT COMPLETE

PARTS LIST FOR J-2 HYDRAULIC JACK
MODEL NO. P-908

Part No.	No. Req'd	Description
X-9972	1	Chassis Unit Complete
X-9625	2	Caster Unit Complete
1435	2	Pin $\frac{1}{8}$ " dia. x $2\frac{1}{8}$ " lg.
9626	2	Caster Yoke
9627	2	Caster Wheel
X-9628	1	Drag Link Unit Complete
9629	2	Drag Link $\frac{3}{8}$ " x $1\frac{1}{4}$ " x $14\frac{1}{2}$ " lg.....
9630	1	Rest Plate Bearing
9631	1	Pin $\frac{1}{8}$ " dia. x $4\frac{1}{8}$ " lg.....
9637	1	Bell Crank
9638	1	Release Cam
9639	2	Wheel
9640	1	Rest Plate
9642	2	Hub Cap
9643	30	Pin $\frac{1}{8}$ " dia. x $1\frac{1}{8}$ " lg.....
9644	2	Washer $1\frac{1}{8}$ " O.D. x $\frac{1}{8}$ " thick
9645	1	Pin $\frac{5}{8}$ " dia. x $2\frac{7}{8}$ " lg.
9648	1	Ram Pin $\frac{3}{8}$ " dia. x $4\frac{1}{2}$ " lg.....

Part No.	No. Req'd	Description
9649	2	Tension Spring $\frac{1}{2}$ " O.D. x $9\frac{3}{4}$ " lg....
9650	2	Outer Ball Race
9651	2	Inner Ball Race
9652	2	Caster Screw
9653	2	Pump Link $\frac{1}{4}$ " x 1 " x 5 " lg.....
9654	1	Shouldered Pin
10558	1	Release Cam Stud
9658	1	Ram Screw
9664	2	Shouldered Pin
9973	1	Frame
9974	1	Front Axle $\frac{3}{4}$ " dia. x $9\frac{1}{2}$ " lg.
9975	1	Bell Crank Pin $\frac{1}{2}$ " dia. x $6\frac{1}{8}$ " lg....
9976	1	Handle Pin $\frac{1}{8}$ " dia. x $6\frac{1}{8}$ " lg.....
9977	1	Cover Plate
PA-688	42	Steel Ball (Hardened)— $\frac{1}{4}$ "
PA-749	1	Washer 1 " O.D. x $\frac{1}{8}$ " thick
PA-963	1	Groov-Pin $\frac{1}{4}$ " dia. x $1\frac{1}{4}$ " lg.....
PA-965	2	Retaining Ring $\frac{3}{4}$ " dia. Shaft
PA-1092	2	Groov-Pin $\frac{1}{4}$ " dia. x $\frac{3}{4}$ " lg.....
PA-1093	1	Elastic Stop Nut— $\frac{3}{8}$ "
PA-1420	1	"GB" Ball Valve Oil Hole Cover