

Installation Instructions for 79021

Adjustable Hydraulic Transmission Jack

1100 lb. Capacity

This jack is a removal hydraulic with the following advantage compact construction, light in weight, long lift range, fast in lift, agile and stable in removing, center of the load adjustable and safe and reliable etc.

It can be used when assembling and disassembling the removal parts, structural part, which need lifted, descended transported, it's the ideal tool for assembling and repairing in motor repair shop, mobile garage.

MAIN SPECIFICATION

Rated capacity (kg)	Min.height of saddle(mm)	Max.height of saddle(mm)	N.W. (kg)	Dimensions (mm)	Adjustable angle of saddle(°)	Adjustable skew of saddle(mm)
500	850	1760	63	490X270X740	10	25

MAIN CONSTRUCTION

This jack is combined by

(1)power unit (2)wheelstand unit (3)saddle unit

ASSEMBLING BEFORE USE

For transportation, the jack is separated into three components. When used first time assembling according to the No.1 drawing.

1. wheelstand

(1) connect the two wheelstands (1) with the power unit (4) by inserting the in six-angled bolt (2) (M12X75)and washer (3) into the proper hole on the power unit and tighten the screw. (2) Assembling four castors wheels (5) together with spring washer (6) on the four feet of the wheelstands (1) and tighten the nuts (2).

2. Make the first part of piston into the hole (Φ 28) of the saddle unit (8) at the proper position and thghten the screw (M8)(9).

3. Fasten the two cramps (10) with bolt (11) (M12X25) and washer (3) to the nut (12) (M12) on the saddle unit (8) and closen the screw, the distance between the two cramps can be adjusted if needed.

4. Change the air vent valve (13) with a hole in the center instead of the one without a hole

That's all for assembling.

INSTRUCTION

1. Raising the saddle

Tighten the release valve handle (15) by tuning in a clockwise direction and operate the foot pedal (14). If by hand, place the handle in the foot operated handle sleeve, operate the handle up and down.

2. Lowering the saddle

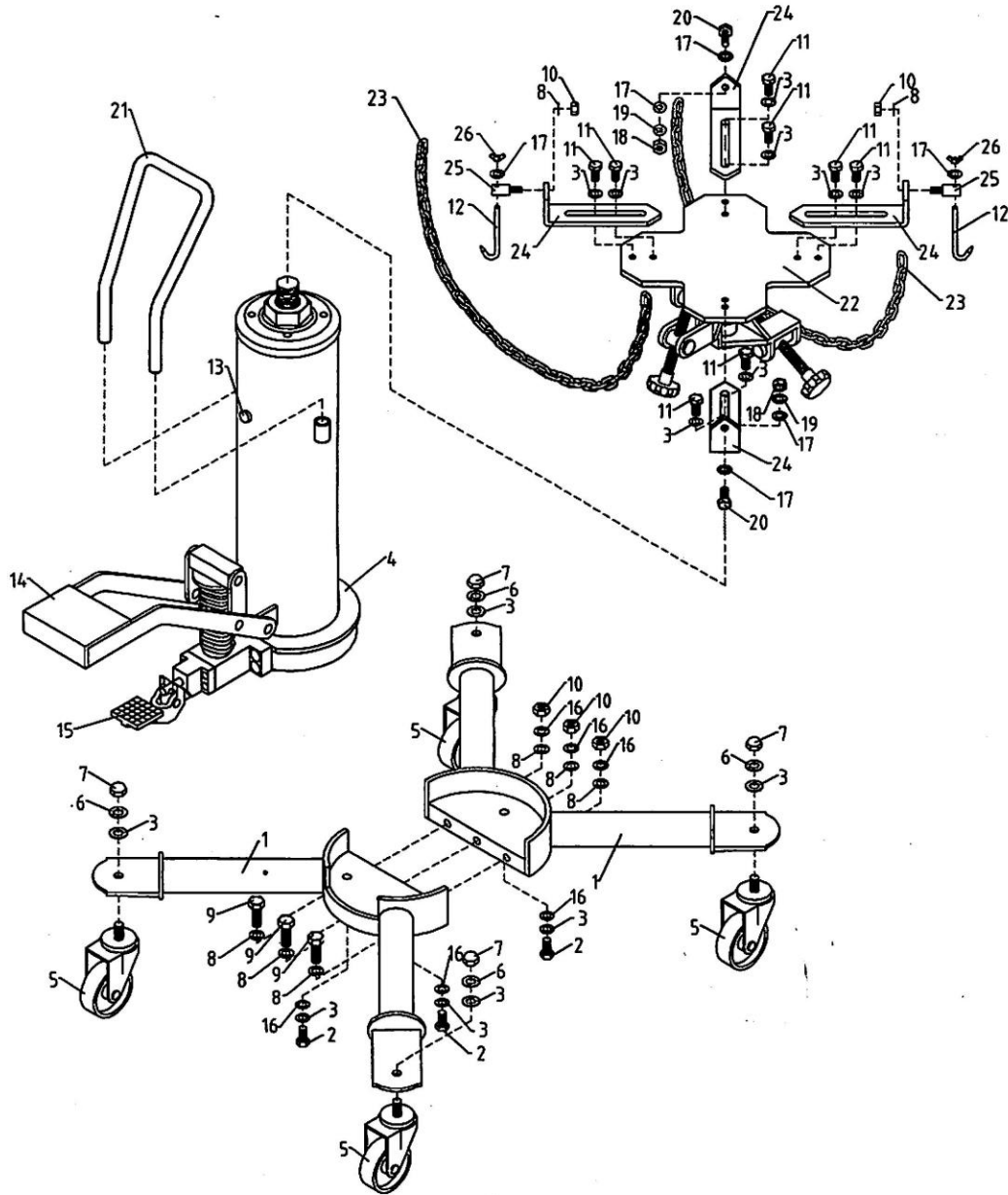
For safety, turn the release valve handle very slowly in counter – clockwise. Be sure not exceed 25mm per second. If it lowers too fast, tum the release valve handle in clockwise.

WARNING

1. Be sure not exceed the rated capacity 0.5T.
2. Be sure to load frimly on center of the transmission jack. If not, adjust the handle to close it.
3. After putting the load on it, usde safety chain.
4. When lifting load, need work under it, must use the safety stand.
5. There must be enough oil in the cylinder so that the cylinder can opercate regularly.
6. When remove the transmission jack, the saddle must be at the lowest position.
7. Keep the removal parts to avoid rusted.



1-800-345-4545 jeps.com



ITEM NO.	DESCRIPTION	Q' TY
1	wheelstand	2
2	In six-angled blot(M12X30)	3
3	Washer(ø12)	15
4	Power unit	1
5	Castor wheel	4
6	Spring washer(12mm)	7
7	Nut(M12)	4
8	Washer(ø10)	8
9	In six-angled blot(M10X30)	3
10	Nut(M10)	5
11	Out six-angle bolt(M12X25)	8
12	Hook	2
13	Oil plug	1

ITEM NO.	DESCRIPTION	Q' TY
14	Foot pedal	1
15	Release valve	1
16	Spring washer(10mm)	3
17	Spring washer(8mm)	6
18	Nut(M8)	2
19	Spring washer(8mm)	2
20	Out six-angle bolt(M8X25)	2
21	Handle	1
22	Bracket	1
23	Iron chain	2
24	Slider	4
25	Bolt	2
26	Nut(M8)	2



1-800-345-4545 jegs.com