

JC Penney

Portable Hydraulic 1 1/2 Ton Floor Jack

Model 2012

Catalog No. 986-1212

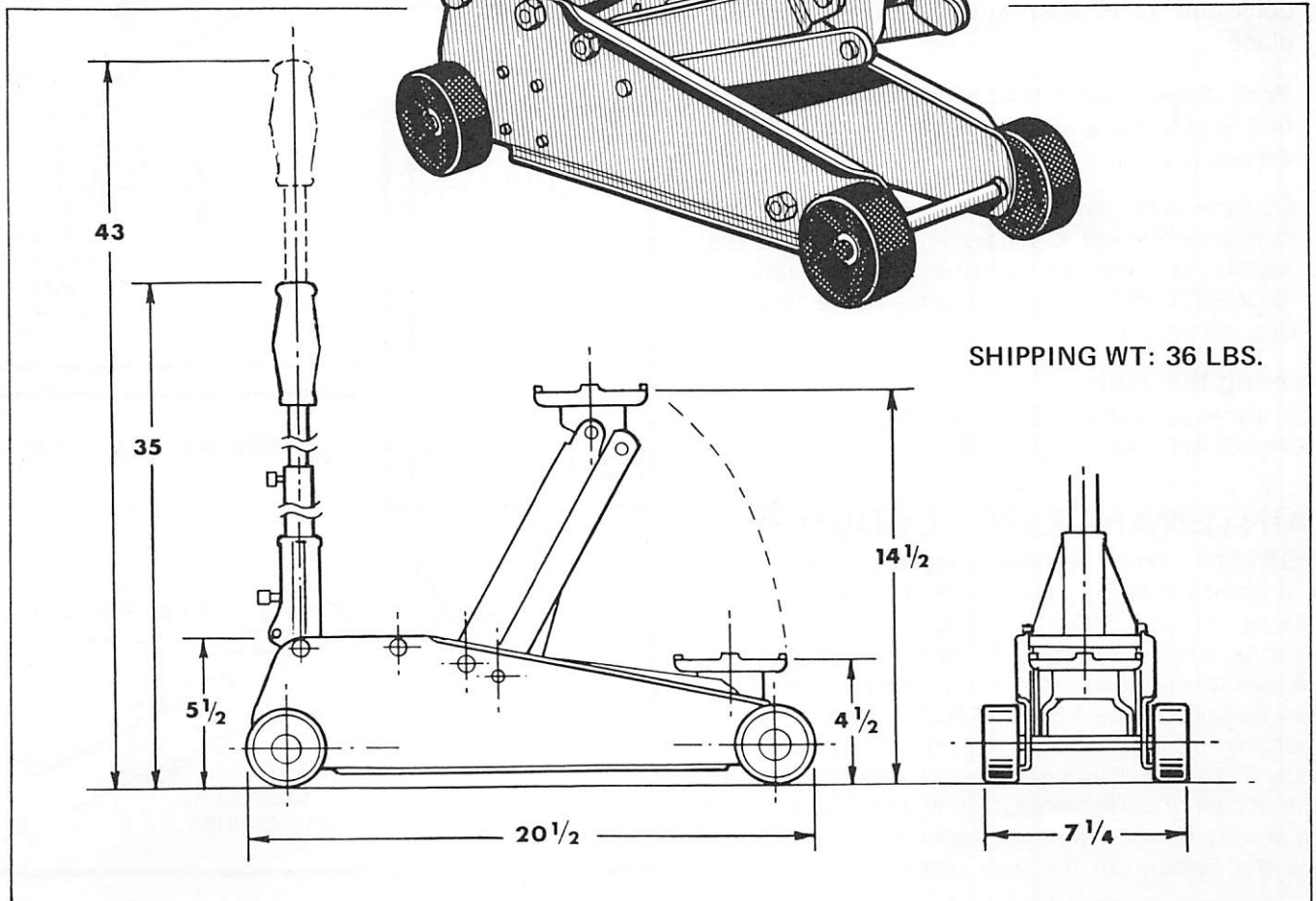
OWNERS MANUAL

IMPORTANT

Please read these instructions carefully before using your jack. Proper use and care of the jack will help to assure you of continuous, safe, trouble-free performance and will help avoid any warranty problems.

U.S. PATENT NO.
4018421
4131263

SPECIFICATIONS



CAUTION

THIS JACK IS DESIGNED FOR JACKING PURPOSES ONLY. AFTER JACKING, ALWAYS USE SAFETY STANDS TO SUPPORT LOAD BEFORE MAKING REPAIRS. FOR YOUR SAFETY-DO NOT OVERLOAD THIS JACK BEYOND ITS RATED CAPACITY.

RULES FOR SAFE OPERATION

Installing the Handle

Back out lower Hex Head Bolt and insert handle into handle base as shown. Rotate handle slightly to make sure hex opening fully engages Release Valve Key. Handle must be all the way into handle base (up to RED LINE) or Jack will not lower. When Handle is fully engaged with Key, Turn Hex Head Bolt into Handle Base all the way until snug.

IMPORTANT: Sometimes during shipment and handling, air gets into the hydraulic system, causing poor lifting performance. Purge any air from the system by simply opening Release Valve (turn handle counter-clockwise) and operate pump handle rapidly several times.

Positioning under Load & Raising Jack

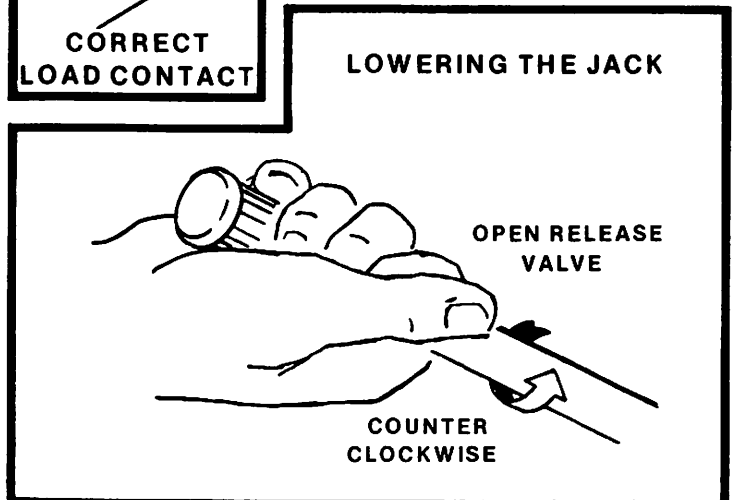
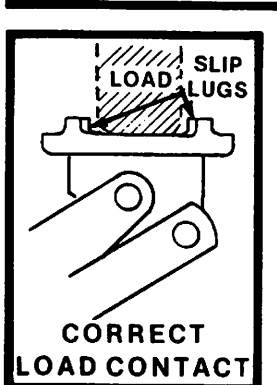
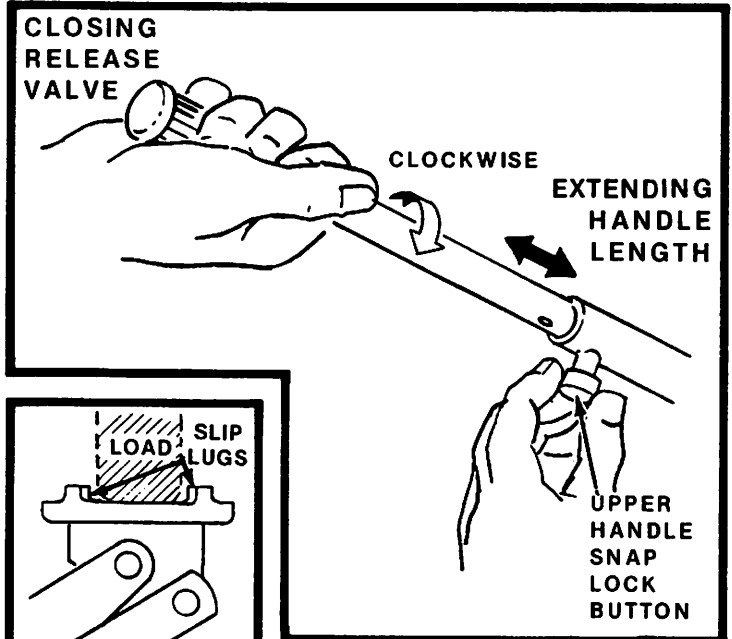
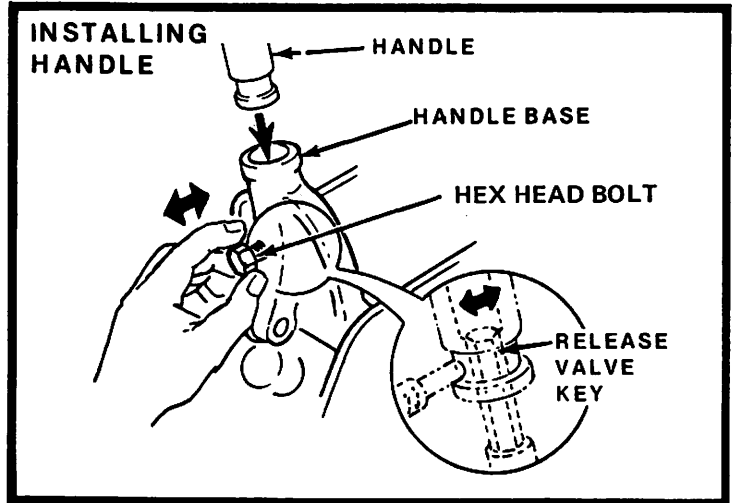
1. Close Release Valve TIGHTLY by turning handle CLOCKWISE.
2. Extend handle length if needed by releasing upper handle Snap Lock and pulling out upper handle until mating hole lines up with Snap Lock button. Release button to lock handle in place.
3. Position jack under load so that saddle will contact load firmly and is centered by slip lugs so it cannot slip.
4. Operate jack handle until saddle approaches contact with load. Once again, check to see that saddle is correctly positioned and load is "LOCKED IN" by Slip Lugs. Raise load to desired height.

Lowering the Jack

Open Release Valve VERY SLOWLY by turning handle COUNTER-CLOCKWISE.

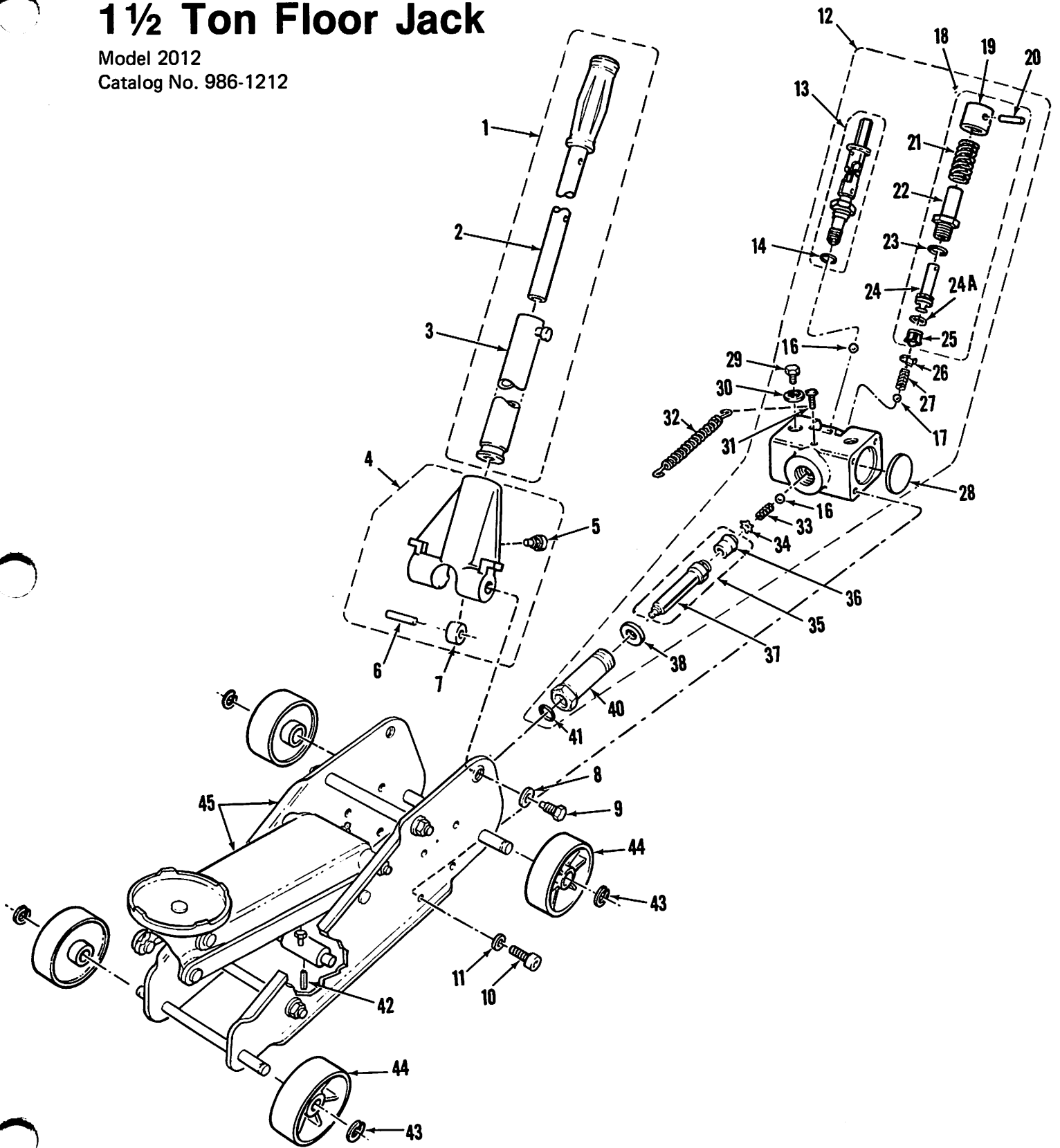
MAINTENANCE PROCEDURES

IMPORTANT: When adding or replacing oil, always use a good grade hydraulic jack oil. Avoid mixing types of oil. DO NOT use Brake Fluid, Alcohol, Glycerine, detergent motor oil or dirty oil. Improper fluid can cause serious internal damage to jack. When adding oil, be VERY CAREFUL not to permit dirt or any foreign matter to get into the system. Check Ram and Plunger every 3 months for any signs of rust or corrosion. Clean as needed and wipe with an oily cloth. When not using the jack, always leave the Saddle all the way down



Renewal Parts Data Portable Hydraulic 1 1/2 Ton Floor Jack

Model 2012
Catalog No. 986-1212



JC Penney

Renewal Parts Data

Portable Hydraulic

1½ Ton Floor Jack

Form No. AJ-12

Model 2012

Catalog No. 986-1212

Ref. No.	J C Penney Part No.	Supplier Part No.	Description	No. Used
1		213040	Handle Assy – complete <i>includes:</i>	1
2		212005	Upper Handle Assy	
3		212010	Lower Handle Assy	
4		213050	Handle Base Assy <i>includes:</i>	
5		3047	Bolt, Hex Hd. 1/4 - 20	
6		7026	Pin	
7		212027	Roller	
8		2044	Lockwasher	2
9		213014	Screw-mtg.	2
10		3034	Screw-Socket Hd. 1/4 - 20	8
11		2004	Lockwasher	8
12		213035	Oil Block Assy – complete <i>includes:</i>	
13		213015	Release Valve Assy <i>includes:</i>	
14		8018	"O" Ring	
16		9007	Check Ball – 3/16"	2
17		9004	Check Ball – 1/4"	
18		213020	Pump Assy <i>includes:</i>	
19		213023	Cap	
20		7034	Pin	
21		4003	Spring	
22		213022	Body	
23		8016	"O" Ring	
24		213027	Piston	
24A		12059	"O" Ring	
25		8020	Cup-packing	
26		213033	Retainer	
27		4009	Spring	
28		212103	Freeze Plug	2
29		3043	Bolt – Filler Plug	2
30		8011	Stat-o-seal	2
31		3002	Screw	
32		4006	Spring-return	
33		4005	Spring	
34		12058	Retainer-star	
35		213045	Ram Assy <i>includes:</i>	
36		8019	Cup-packing	
37		213026	Ram	
38		8029	Gasket – Polyurethane	
40		213030	Cylinder	
41		8017	"O" Ring	
42		7034	Pin	
43		2003	Snap Ring	4
44		212207	Wheel	4
45		213075	Frame & Elevator Arm Assy (Black W/Yellow Saddle)	

JCPenney