

# **1 $\frac{1}{4}$ Ton Hydraulic Garage Jack**

## **Owner's Handbook**

Retail No. 2010  
Cat. No. 986-8266

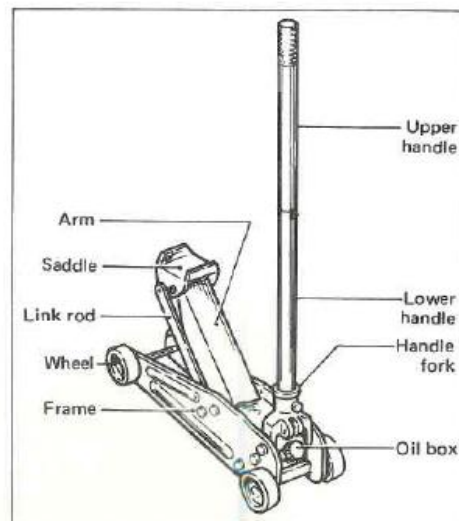
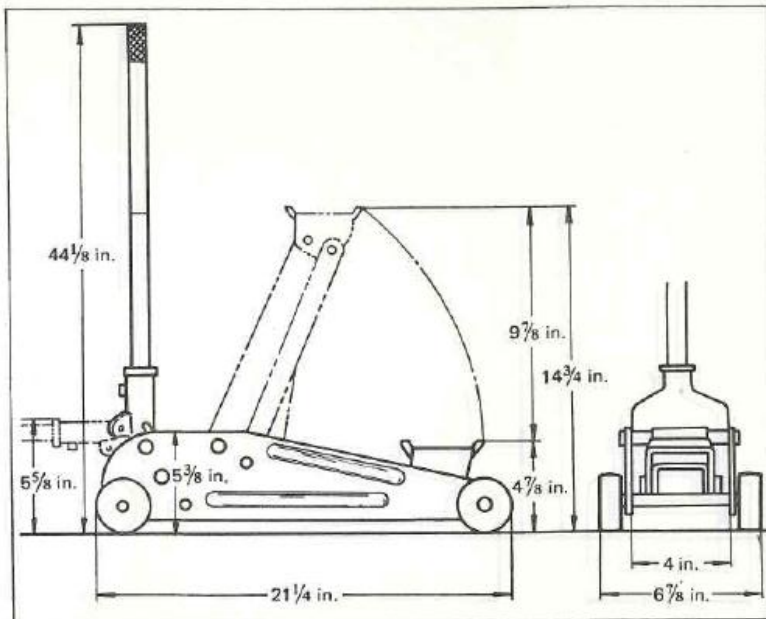
**JCPenney**

## Specifications

## Safety Rules

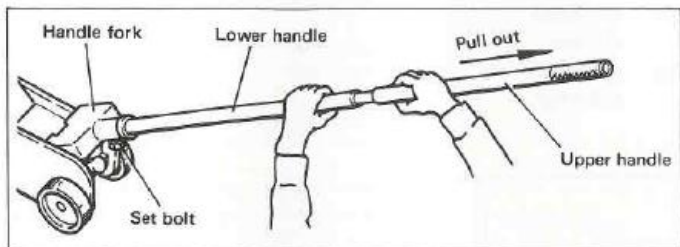
Capacity . . . . .	1¼ tons	(1,250 kg)
Minimum Saddle Height . . . . .	47⁄8 inches	(12.5 cm)
Maximum Saddle Height . . . . .	14¾ inches	(37.5 cm)
Hydraulic Lift . . . . .	97⁄8 inches	(25 cm)
Overall Length . . . . .	21¼ inches	(54 cm)
Overall Height . . . . .	441⁄8 inches	(112.3 cm)
Overall Width . . . . .	67⁄8 inches	(17.5 cm)
Frame Height . . . . .	53⁄8 inches	(13.8 cm)
Frame Length . . . . .	20¼ inches	(51.3 cm)
Inside Frame Width . . . . .	4 inches	(10 cm)
Handle Length . . . . .	393⁄8 inches	(100 cm)
Weight of Jack . . . . .	36.3 lbs.	(16.5 kg)

1. DO NOT use engine oil or hydraulic brake fluid when refilling tank (about once each year). **Use only hydraulic jack oil.**
2. Before jacking up car, check car manual for information where to place jack. This jack is designed for jacking under axles or approved jacking points only.
3. DO NOT attempt to exceed the jacking capacity of 1¼ tons.
4. Always use jack on a solid hard surface that is horizontal to prevent rolling.
5. After jacking up car, always place safety stands under the axles before starting repairs.
6. Place chocks under wheels on both sides to prevent rolling.
7. Always use safety stands in pairs, and check them to ensure they are not cracked, corroded, or otherwise damaged.
8. DO NOT work under car when car wheels are removed.
9. Keep bystanders away from the car and from the jack.



**Jack Handle**

The handle is in two pieces and must be assembled by inserting the upper handle with the detent ball end into the top of the lower handle. After assembling the handle, insert it into the handle fork, and tighten the set bolt.



Your hydraulic garage jack uses hydraulic force to raise the arm and saddle.

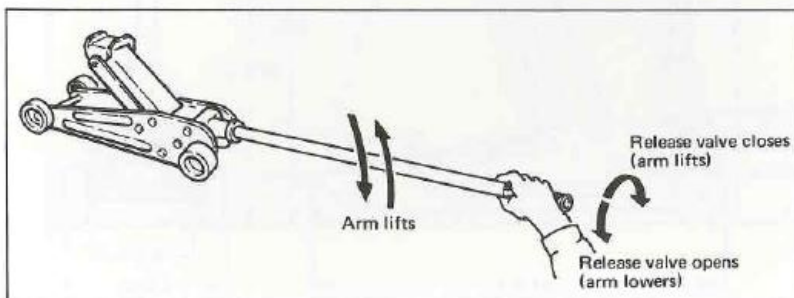
Hydraulic oil is contained in the tank which is part of the jack, and when the jack handle is worked the oil is forced through a valve into a cylinder. The piston inside the cylinder in turn pushes the rod which operates the arm.

By opening the valve, the oil again reenters the tank, thus lowering the arm and saddle.

The operation of the jack is explained in the following instructions:

**To Lift**

Twist the handle toward the right (clockwise) as far as it will turn. The jack is now ready for operation. Position the jack correctly under the appropriate place, and begin lifting by pumping the handle up and down. Be sure jack wheels are on a solid and level surface.



**Safety Stands**

After lifting up the car to desired height, be sure to place safety stands under the lifted axles. Lower the car onto the safety stands by slowly turning the handle toward the left (counterclockwise) to lower the car. DO NOT get under the car when it is supported by the jack.

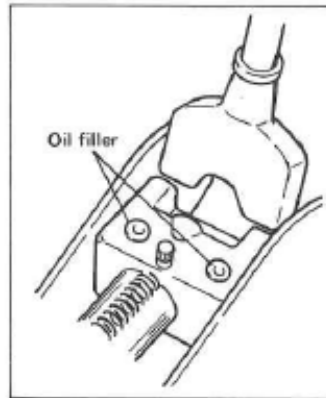
**To Lower**

After completing the car repairs, use the jack to lift the car up sufficiently to remove the safety stands. Turn the handle to the right as far as it will go, then pump the handle up and down until the car is lifted. Remove the safety stands. Make sure no obstructions are left under the car. Turn the handle slowly toward the left, lowering the car to the floor.

## Oil Tank

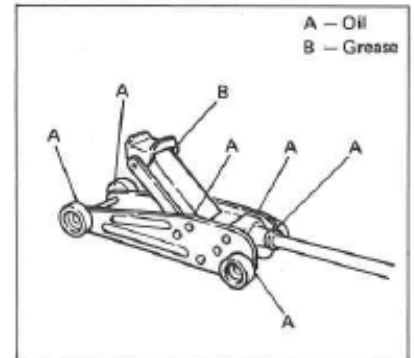
The tank containing the hydraulic oil is of the sealed type and normally requires no maintenance.

Oil filler holes are provided in case the oil seals deteriorate (after long usage) and must be replaced. When refilling, be sure to use hydraulic jack oil. Never use engine or brake oil.



## Wheels and Pivots

Once every month lubricate the wheel axles and all pivot points with engine oil. Also apply oil to the under part of the saddle. Use grease around the arm pins.



## Troubleshooting

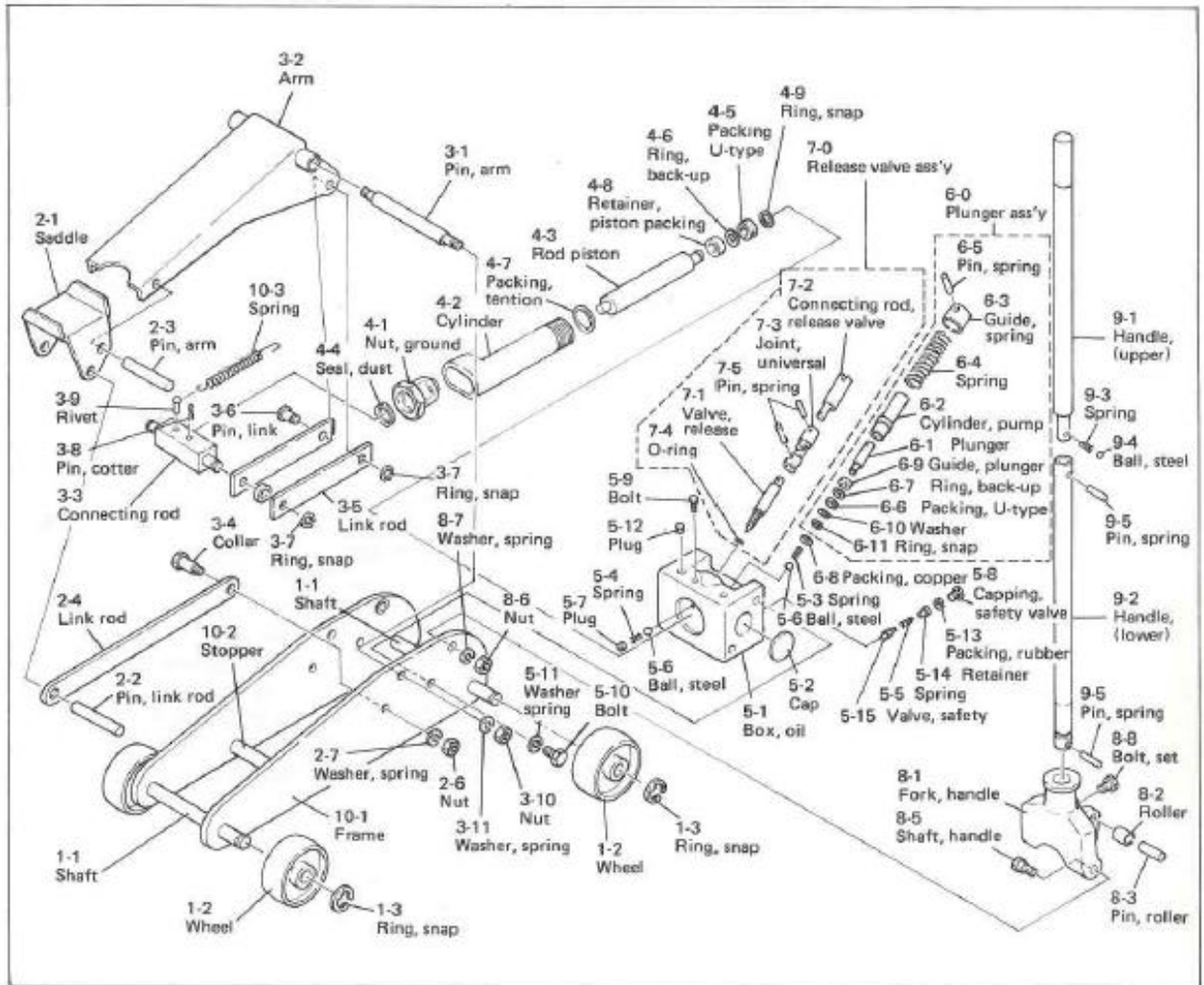
Trouble	Possible Cause	Remedy
1. Jack does not lift.	<ol style="list-style-type: none"><li>1. Release valve open.</li><li>2. Oil exhausted.</li><li>3. Defective suction and/or exhaust valve.</li><li>4. Defective packing.</li></ol>	<ol style="list-style-type: none"><li>1. Tighten release valve.</li><li>2. Fill tank with oil.</li><li>3. Check for dust or foreign matter, and clean.</li><li>4. Replace packing.</li></ol>
2. Lifts only half way.	Insufficient oil.	Check oil supply, and fill.
3. Lifts, but then lowers out of control.	<ol style="list-style-type: none"><li>1. Defective suction and/or exhaust valve.</li><li>2. Defective piston packing.</li></ol>	<ol style="list-style-type: none"><li>1. Clean valves and adjust valve contact</li><li>2. Replace the piston packing.</li></ol>
4. Erratic lift.	Defective plunger packing and/or incorrect valve.	Clean valves and/or packing. Replace oil.



# Illustrated Parts List

Parts for the jack are available from your JCPenney store. When ordering parts be sure to give the:

1. Retail Number
2. Part Number
3. Part Description



# Illustrated Parts List

Ref. No.	JCPenney Part No.	Supplier Part No.	Description
1-1		GT 5010100 00	Shaft
1-2		GT 5010200 00	Wheel
1-3		YY 3760000 00	Ring, snap
2-1		GT 5020100 00	Saddle
2-2		GT 5020200 00	Pin, link rod
2-3		GT 5020300 00	Pin, arm
2-4		GT 5020400 00	Link rod
2-5		GT 5020500 00	Pin, link rod
2-6		YY 3710000 00	Nut
2-7		YY 3810000 00	Washer, spring
3-1		GT 5030100 00	Pin, arm
3-2		GT 5030200 00	Arm
3-3		GT 5030300 00	Connecting rod
3-4		GT 5030400 00	Coller
3-5		GT 5030500 00	Link
3-6		GT 5030600 00	Pin, link
3-7		YY 3760000 00	Ring, snap
3-8		YY 3780000 00	Pin, cotter
3-9		YY 3790000 00	Rivet
3-10		YY 3710000 00	Nut
3-11		YY 3810000 00	Washer, spring
4-1		GT 5000100 00	Nut, ground
4-2		GT 5040200 00	Cylinder
4-3		GT 5040300 00	Rod, piston
4-4		YY 3580000 11	Seal, dust
4-5		YY 3411022 01	U type packing
4-6		YY 3690220 10	Ring, back-up
4-7		CU 4382800 00	Packing, copper
4-8		GT 5040800 00	Retainer, piston packing
4-9		YY 3760000 00	Ring, snap
5-1		GT 5050100 00	Box, oil
5-2		GT 4050200 00	Cap
5-3		YE 3180105 00	Spring
5-4		AC 3191500 00	Spring
5-5		GT 3050500 00	Spring
5-6		YY 3930000 00	Ball, steel
5-7		GT 5050700 00	Plug
5-8		YY 3720000 00	Cap plug, safety valve
5-9		YY 3700000 00	Bolt
5-10		YY 3700000 00	Bolt
5-11		YY 3810000 00	Washer, spring
5-12		YY 3950000 00	Plug
5-13		YY 3500000 17	Packing, rubber
5-14		MP 5090300 00	Retainer
5-15		MP 5090400 00	Valve, safety

Ref. No.	JCPenney Part No.	Supplier Part No.	Description
6-1		GT 5060100 00	Plunger
6-2		GT 5060200 00	Cylinder, pump
6-3		GT 5060300 00	Guide, spring
6-4		GT 3060400 00	Spring
6-5		YY 3770000 00	Pin, spring
6-6		YY 3411009 00	U type packing
6-7		YY 3600090 00	Ring, back-up
6-8		CU 4184000 00	Packing, copper
6-9		GT 5060900 00	Guide, plunger
6-10		GT 4061000 00	Washer
6-11		YY 3760000 00	Ring, snap
7-0		GT 5070000 00	Release valve assembly
7-1		GT 5070100 00	Valve, release
7-2		GT 5070200 00	Connecting rod, release valve
7-3		YY 3650000 08	Joint, universal
7-4		YY 3411009 00	O-ring
7-5		YY 3770000 00	Pin, spring
8-1		GT 5080100 00	Fork, handle
8-2		GT 5080200 00	Roller
8-3		GT 5080300 00	Pin, roller
8-5		GT 5080500 00	Shaft, handle
8-6		YY 3710000 00	Nut
8-7		YY 3810000 00	Washer, spring
8-8		GT 5080800 00	Bolt, set
9-1		GT 5090100 00	Handle, upper
9-2		GT 5090200 00	Handle, lower
9-3		GT 3090300 00	Spring
9-4		YY 3930000 00	Ball, steel
9-5		YY 3770000 00	Pin, spring
10-1		GT 5100100 00	Frame
10-2		GT 5100200 00	Stopper
10-3		GT 3100300 00	Spring