



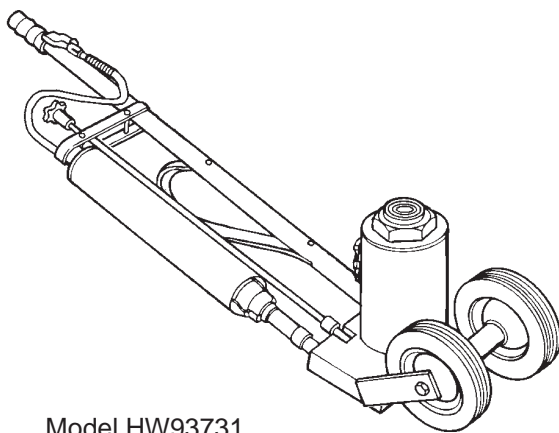
# Air Actuated Truck Jacks

## Operating Instructions & Parts Manual

Model Number	Capacity
<del>HW93731</del>	<del>20 Ton</del>
HW93733	20 Ton



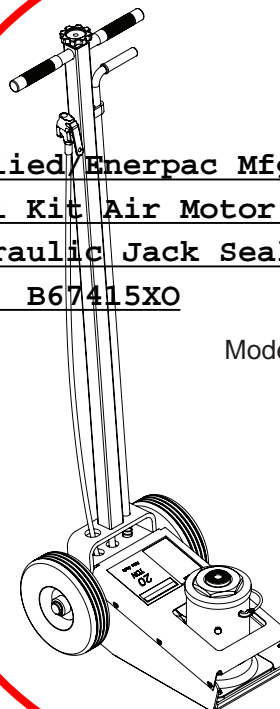
Made in the  
U.S.A.



Model HW93731

Applied/Enerpac Mfg Air Motor  
Seal Kit Air Motor and  
Hydraulic Jack Seal Kit  
B67415X0

Model HW93733



This is the safety alert symbol. It is used to alert you to potential personal injury hazards. Obey all safety messages that follow this symbol to avoid possible injury or death.

SFA Companies  
10939 N. Pomona Ave. Kansas City, MO 64153  
customerservices@heinwerner-automotive.com

Read this manual and follow all the Safety Rules and Operating Instructions before using this product.

# SPECIFICATIONS

Model HW93731	
Rated Load Capacity	20 tons (40,000 lbs)
Low Pick Up Height	9-1/2"
High Lifting Point	17-1/2"
Power Raise	5-1/2"
Screw Extension	2-1/2"
Base Size	8" x 5-1/2"
Ram Diameter	2-3/16"
Handle Length	50"
Wheel Diameter	6"
Max. Air Pressure Supply	150 psi
Required Air Pressure For Lifting Loads	140 psi for 40,000 lb. 125 psi for 35,400 lb. 100 psi for 27,900 lb. 75 psi for 18,700 lb.

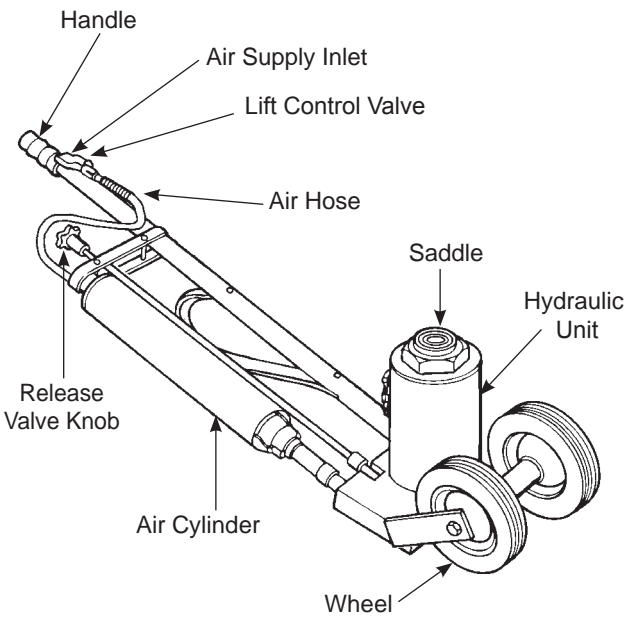


Figure 1 - Model HW93731 Nomenclature

Model HW93733	
Rated Load Capacity	20 tons (40,000lbs)
Low Height	9"
High Height With Extension	19-3/4"
Screw Extension	4 3/4"
Lift Cap Diameter	2"
Wheel Diameter	8"
Chassis Overall Length	20"
Width at Wheels	13-1/4"
Handle Length	45"
Base Size	8" x 17"
Max. Air Pressure Supply	150 psi
Typical Operating Pressure	125 - 150 psi
Typical Lift Time - Full Raise(20 ton, 150 psi)	2 min. 15 sec

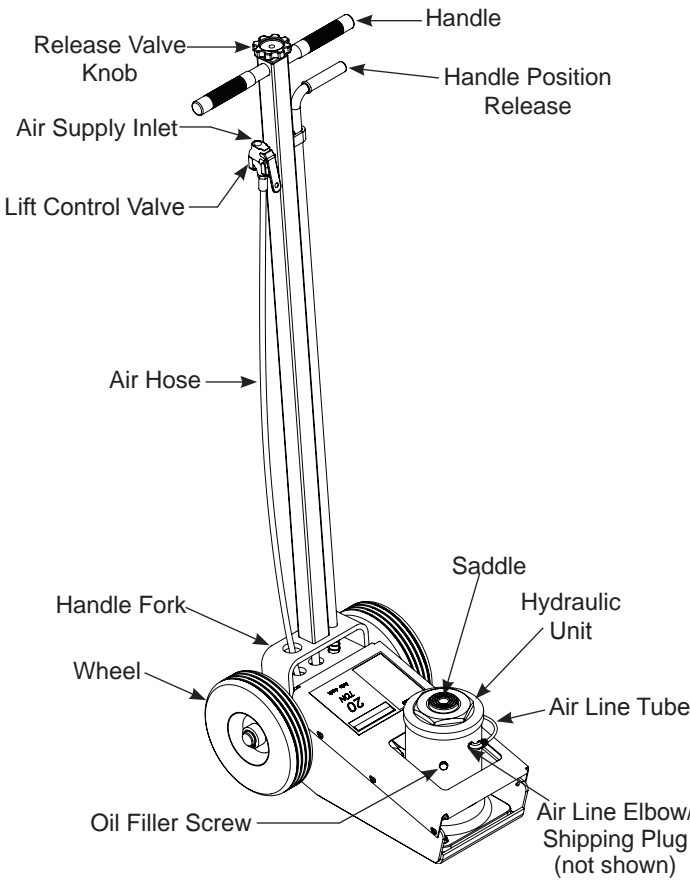


Figure 2 - Model HW93733 Nomenclature

**Replacement Parts Illustration For Model HW93733 (Part I)** - refer to page 11 for parts list

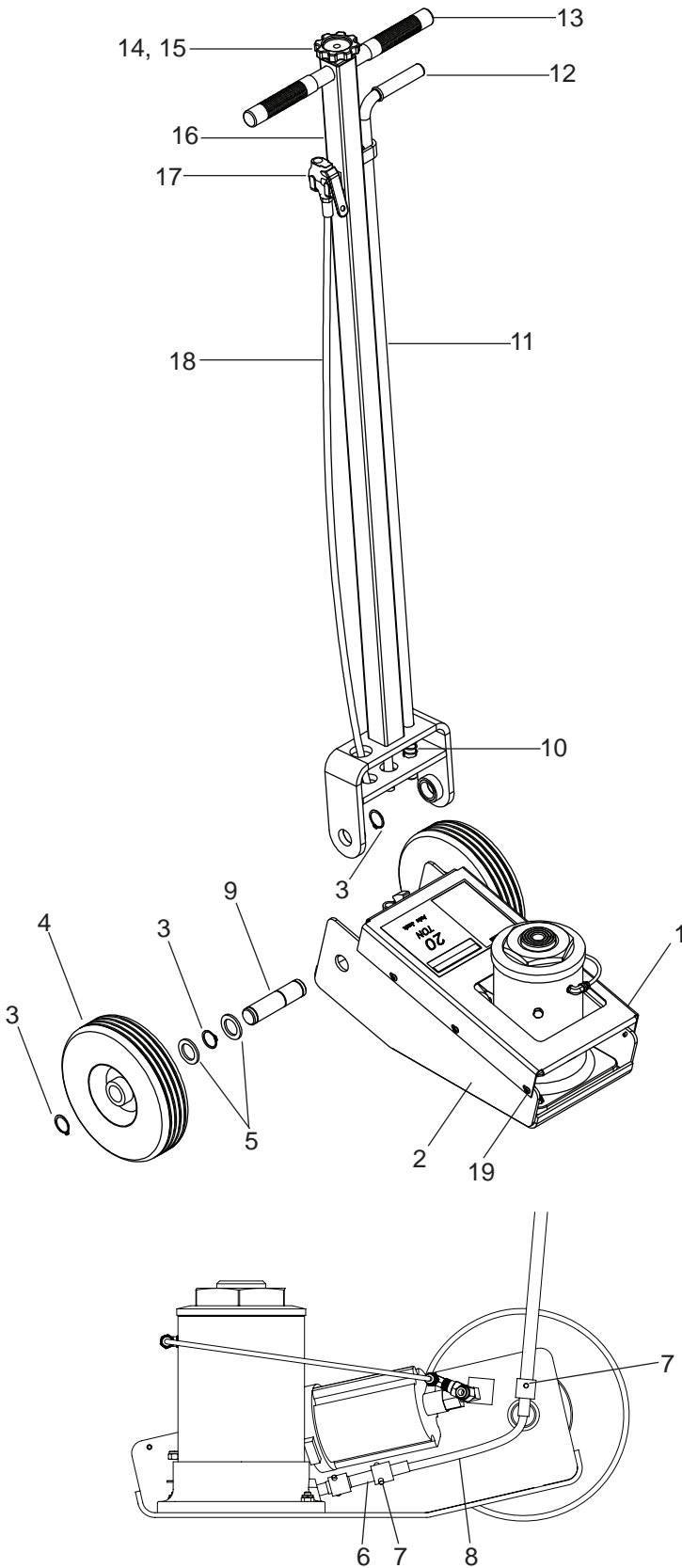
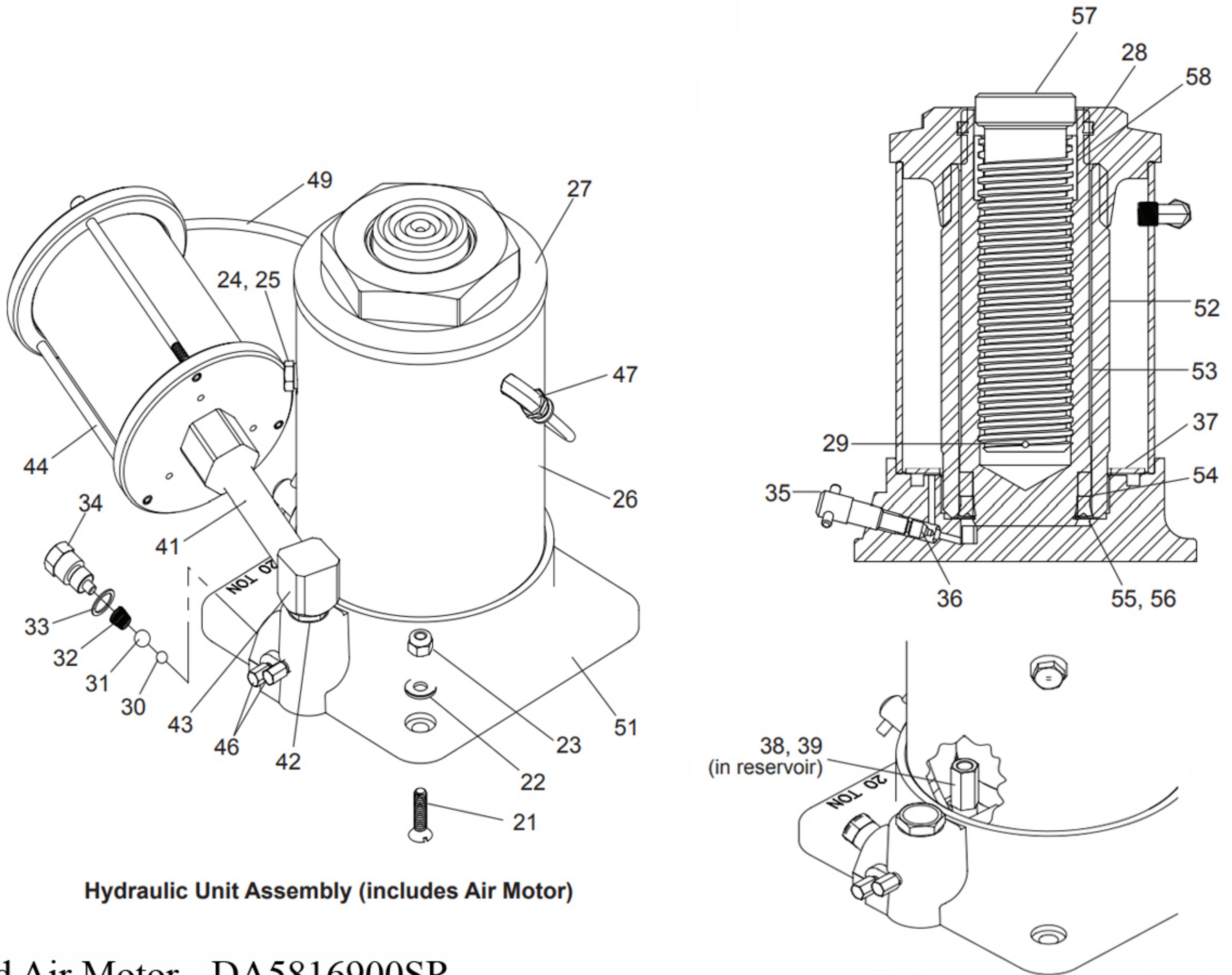


Figure 7 - Parts Illustration for Model HW93733 - Main Frame



## Replacement Parts Illustration For Model HW93733 (Part II) - ref page 11 for parts list



### Hydraulic Unit Assembly (includes Air Motor)

# Applied Air Motor - DA5816900SR

Repair Kit Available LF-PA-133D-RK

If Other Parts Are Needed, Must Purchase Complete Air Motor Assembly.

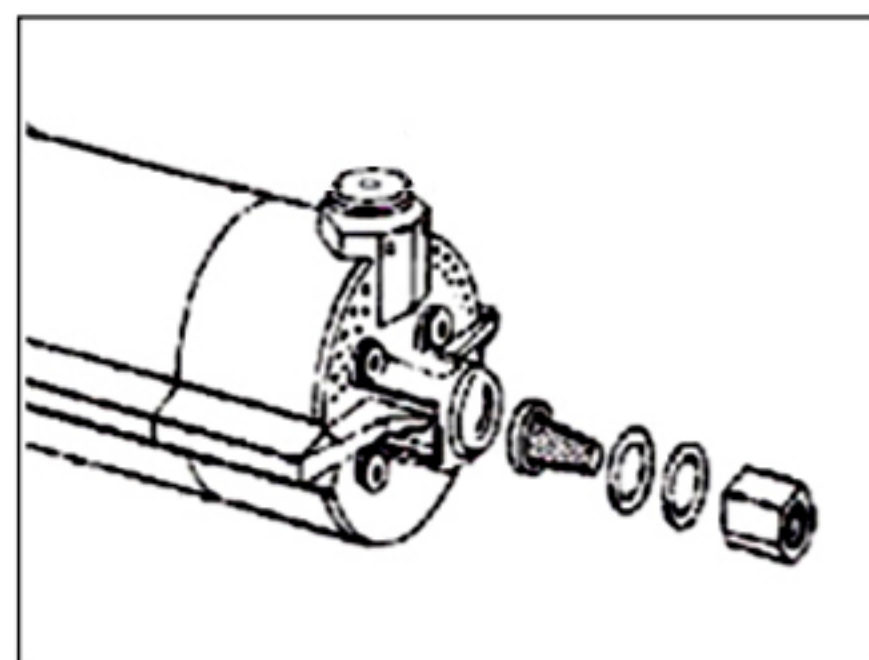
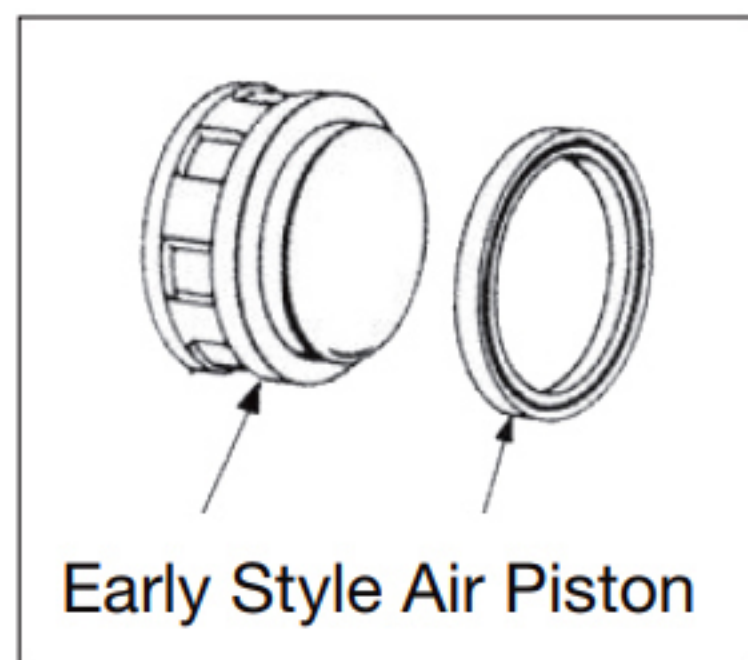
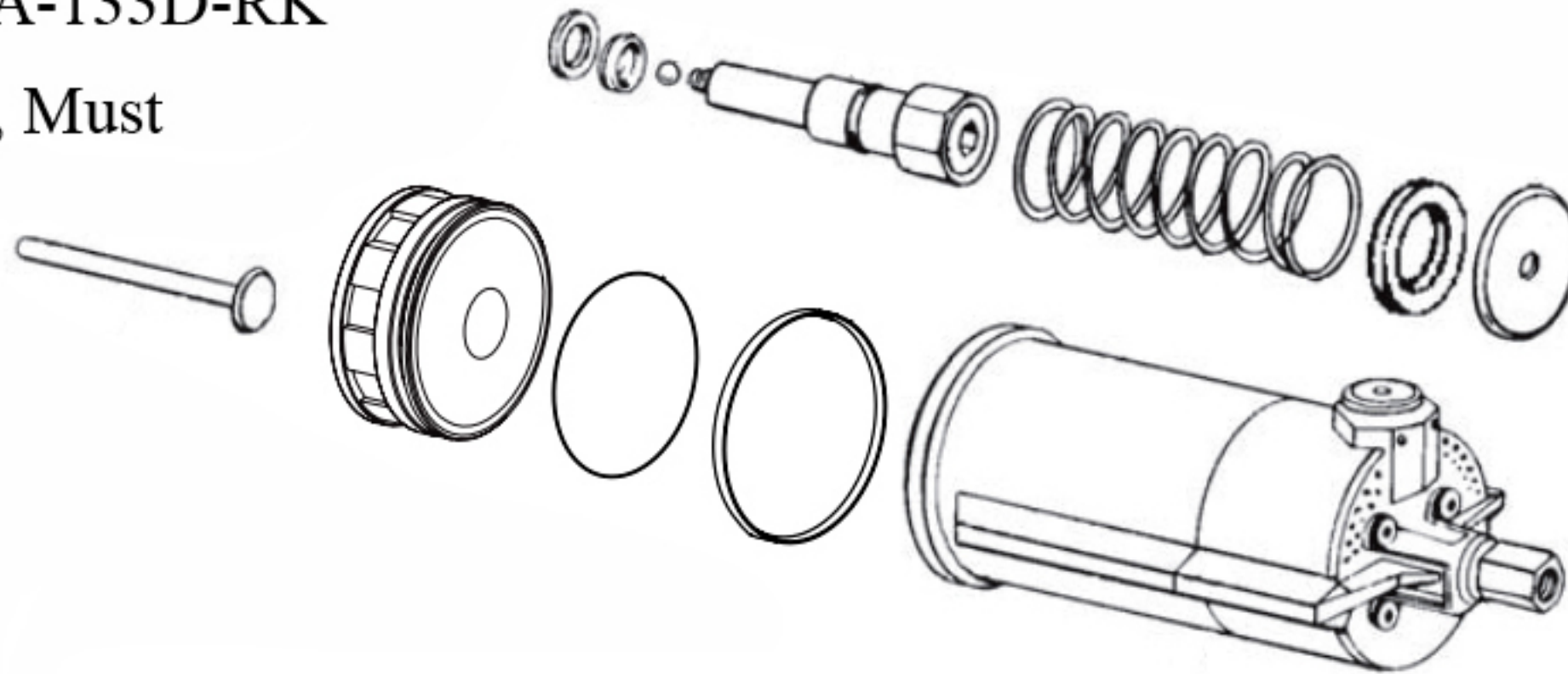


Figure 8 - Parts Illustration for Model HW93733 - Air Motor & Hydraulic Unit



## Replacement Parts List For Model HW93733 - refer to page 9 & 10 for parts drawings.

Item	Part No.	Description	Qty
1	BK210980SF	Top Cover	1
2	BJ511626SF	Frame Weldment	1
3	BB557523SF	Retaining ring, .94D	6
4	BE587106	Wheel, Rubber 8Dx2.5W	2
5	85004016SF	Axle Thrust 1 ID	2
6	BK901038SF	Release Valve Adapter	1
7	23521011	Pin, 3/16D	2
8	85004024	Flex Shaft	1
9	BJ395104SF	Wheel Axle 1D x 4-1/8L	2
10	23314012SF	Handle Release Spring	1
11	85002007SF	Release Rod	1
12	H0933000	Handle Grip, Release Rod	1
13	23220001	Handle Grip	2
14	23220094SF	Knob, Release Valve	1
15	23521011SF	Pin, Knob 3/16D x 1-1/8L	1
16	85001011SF	Handle Assembly	1
17	1-312-00002	Air Valve, 1/4NPT	1
18	BJ354646	Air Hose, 1/4 ID	1
19	SJ100374	Screw, Philips #10-32x1/2L	6
20	90000352SF	Jack & Air Motor Assy.	1
21	BJ318028	Screw, Flat 1/4-20UNCx1L	2
22	BD215108	Washer, 1/4	2
23	SJ100079	Nut, Hex 1/4-20UNC	2
24*	AJ100060	Filler Screw, 5/16-24x1/2L	1
25*	AJ100020	Gasket, 15/32OD	1
26	BJ389025	Reservoir	1
27	BJ398020	Top Cap	1
28*	NJ100046	Quad ring	1
29	BD674061	Pin, 1/8D x 9/16L	1
30*	B1160000	Ball, 7/32	1
31*	BS116000	Ball, 5/16	1
32*	AJ100040	Valve Spring	1
33*	BB159167	Gasket, 19/32OD	1
34*	BK300600	Valve Plug	1
35	BK490010	Release Spindle	1
36*	AJ100312	O-ring, 3/16ID	1
37	BK810800	Washer, 4-5/8OD	1
38	BK876900	Relief Valve	1
39	BS303700	Washer, 3/8OD, 17/64ID	1
40	BJ790096	Nipple, 1/8"MPT	1

Item	Part No.	Description	Qty
41	BK729200SF	Adapter, Air Motor	1
42	BJ580096	Pump Nipple	1
43	BK729100SF	Elbow, 78°, 3/8FPTx1/4MPT	2
44	BK210950	Air Motor	1
45	BJ788039	Bushing	1
46	B1060100	Plug, Hex 1/4-28UNF	2
47	BJ990096	Male Elbow, 90°, 1/8MPT	2
48	BK264096U	Tee, Union, 1/8PT	1
49	BJ649268	Tube, 1/4ODx16L	1
50	BJ479096	Street Elbow, 90°, 1/8NPTF	1
51	N/A	Base	1
52	BJ390030	Cylinder	1
53	21100488	Plunger	1
54*	36400011	Bearing	1
55*	248428	U-cup 2.5x2x.38	1
56*	30600031	Retaining Ring 2-18OD, 1-7/8ID	1
57	BJ382028	Adj, Screw	1
58	BJ385446	Plunger Sleeve	1
(*)	B7002000	Repair Kit	-

(\*) indicates items included in Repair Kit B7002000