

INSTRUCTION MANUAL REPAIR PARTS LIST

HYDRAULIC SERVICE JACK

5 TON (4536 KG) CAPACITY

PART CODE H68052

**WARNING**

1. THIS IS A LIFTING DEVICE ONLY. THE LOAD MUST BE SUPPORTED IMMEDIATELY BY OTHER APPROPRIATE MEANS.
2. DO NOT MOVE OR DOLLY THE VEHICLE WHILE ON THE JACK.
3. DO NOT OVERLOAD. LIFT THE VEHICLE ONLY AT AREAS SPECIFIED BY THE MANUFACTURER.
4. USE ONLY ON HARD LEVEL SURFACE CAPABLE OF SUSTAINING THE LOAD.
5. CENTER LOAD ON SADDLE.
6. DO NOT OPEN OIL FILLER PLUG FOR ANY REASON UNLESS JACK IS FULLY LOWERED.
7. IT IS YOUR RESPONSIBILITY TO KEEP WARNING DECALS LEGIBLE AND INTACT. REPLACEMENT DECALS MAY BE OBTAINED FROM THE FACTORY.
8. STUDY, UNDERSTAND, AND FOLLOW ALL INSTRUCTIONS PROVIDED WITH THIS JACK PRIOR TO OPERATION.
9. FAILURE TO HEED THESE WARNINGS MAY RESULT IN LOSS OF LOAD, DAMAGE TO THE JACK, OR FAILURE RESULTING IN PROPERTY DAMAGE, PERSONAL, OR FATAL INJURY.

OWNER'S RESPONSIBILITY

Operation. The owner and/or operator shall have an understanding of these operating instructions and warnings before operating the jack. Warning information shall be emphasized and understood. If the user is not fluent in English, the instructions and warnings shall be read to and discussed with the operator in the operator's native language by the purchaser/owner, making sure that the operator comprehends its contents.

Maintenance. The jack shall be maintained in accordance with instructions listed under "Maintenance."

Inspection

1. Visual inspection shall be made before each use of the jack, checking for leaking hydraulic fluid, and damaged, loose or missing parts.
2. Each jack, if subjected to an abnormal load shock, shall be inspected immediately by an authorized Hein-Werner service center.
3. Owners and/or users should be aware that repair of this equipment may require specialized knowledge and facilities. It is recommended that an annual inspection of the jack be made by an authorized service center and that any defective parts, decals or warning labels be replaced with genuine Hein-Werner parts. A list of authorized service centers is available upon request.

Damaged Jacks. Any jack which appears to be damaged in any way, is found to be badly worn, or operates abnormally SHALL BE REMOVED FROM SERVICE until necessary repairs are made by an authorized service center.

INSTRUCTIONS BEFORE USE

1. Open release valve by turning knob on top of handle counterclockwise. Pump handle six full strokes to assure proper internal lubrication, and to bleed any air from the hydraulic system. If handle is locked, lift lever on side of handle to release.
2. Squirt a small amount of hydraulic jack oil or light-weight motor oil on the pump pistons. Pump handle several times to distribute oil.
3. Thoroughly lubricate all moving parts of the jack. Raise the saddle to full height by closing release valve and pumping handle. Oil the surface of the ram as well as all moving parts in the handle and lifting mechanism. Grease all grease fittings.

OPERATION

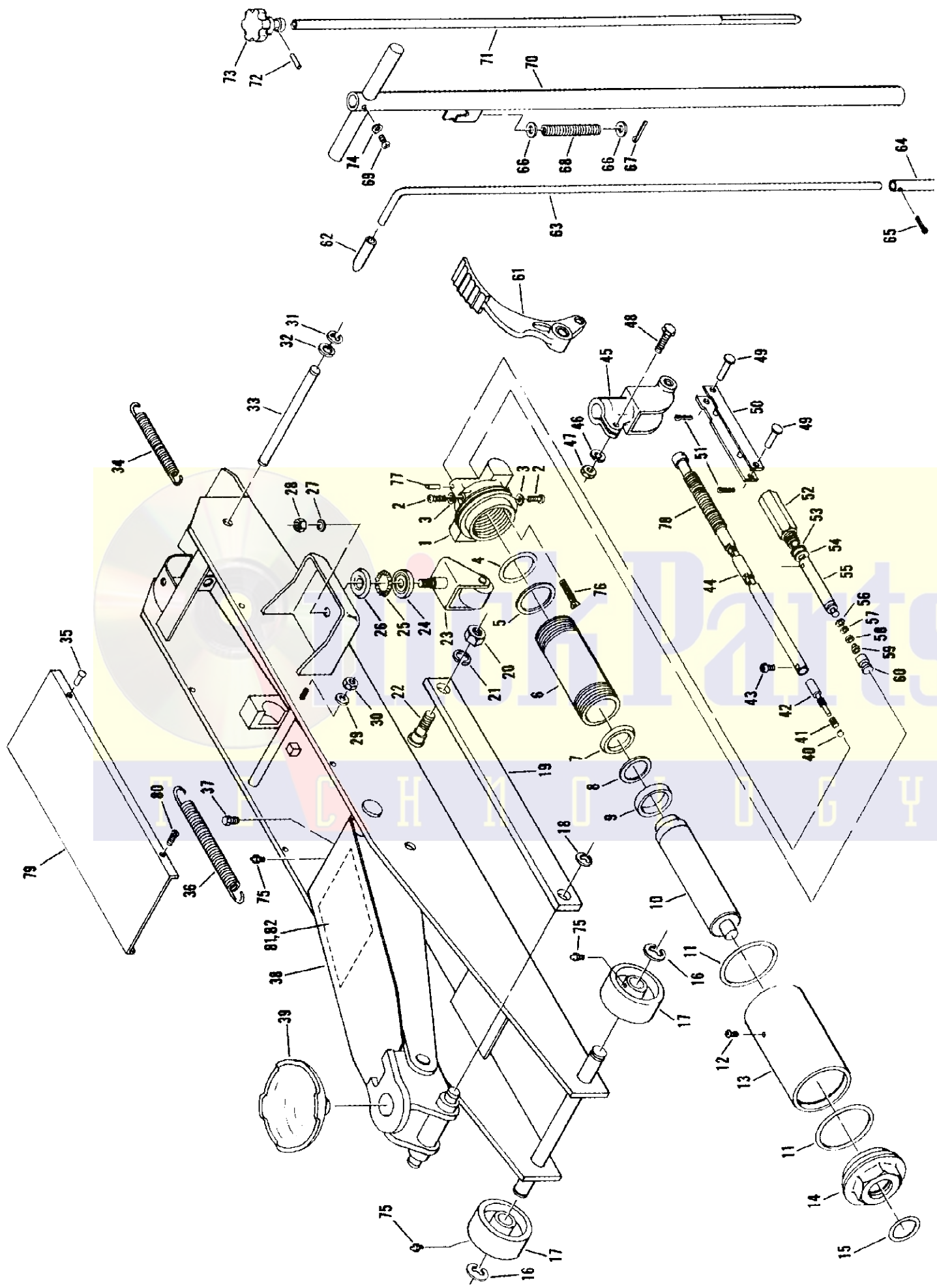
1. **Lifting** - Secure vehicle by blocking wheels. Close release valve by turning knob on top of handle clockwise. Dolly jack until lift saddle is centered under load. Note: Handle may be locked in several positions for dollying. To unlock handle, pull lever up and rotate 90° clockwise. Pump foot pedal to rapidly position saddle under load. Pump handle to lift load.

Always center the load on the saddle of your jack. Off-center loads and loads lifted while jack is not level may damage the jack or cause personal injury.

2. **Lowering** — Slowly turn release knob counterclockwise. **Avoid "shock loads" created by quickly opening and closing the release knob as the load is being lowered. This may result in overloading of the hydraulic circuit and possible damage to the jack.**

MAINTENANCE

1. Regularly check oil level. Use only genuine Hein-Werner hydraulic jack oil in the unit of your jack. Never use alcohol or hydraulic brake fluid.
To check oil level, jack must be at rest, saddle fully down. Remove filler plug and inspect oil level. Level should be just over inner cylinder. Add or drain oil as required to maintain proper oil level. Replace filler plug.
2. Keep the jack clean and well lubricated. Raise the saddle to full height and oil the surface of the ram often, as well as all moving parts in the handle, the pump pistons and the lifting mechanism. Frequently add grease to all fittings.



PART CODE H68052

5 TON HYDRAULIC SERVICE JACK

5 TON HYDRAULIC SERVICE JACK PART CODE H68052

Item No.	Part Code	Description	Qty. Required	Item No.	Part Code	Description	Qty. Required
1	68841	Base	1	44	68880	Universal Joint	1
2	68842	Screw	2	45	68881	Handle Fork	1
3	68843	"O" Ring	2	46	68882	Lock Washer	1
4	68844	"O" Ring	1	47	68883	Nut	1
5	68845	Back Up Ring	1	48	68884	Hex. Bolt	1
6	68846	Cylinder	1	49	68886	Pin - Piston Link	2
7	68847	"U" Cup - Ram	1	50	68887	Piston Link Assy.	1
8	68848	Back Up Ring	1	51	68888	Cotter Pin	1
9	68849	Ram Spacer	1	52	68889	Pump Cylinder	1
10	68850	Ram Plunger	1	53	68890	Washer	1
11	68851	"O" Ring	2	54	69547	Packing	1
12	69530	Filler Plug	1	55	68891	Pump Piston	1
13	68852	Reservoir	1	56	68892	Back Up Ring	1
14	68853	Top Nut	1	57	68893	"O" Ring	1
15	68854	"O" Ring Top Nut	1	58	68894	Back Up Ring	1
16	68855	"E" Ring	2	59	68895	"U" Cup	1
17	68856	Front Wheel	2	60	68896	Hydraulic Cartridge	1
18	68857	"E" Ring	2	61	68899	Pedal Assy.	1
19	68858	Parallel Link	2	62	68900	Grip	1
20	68859	Nut	2	63	68901	Positioning Lever	1
21	68860	Lock Washer	2	64	68902	Pin - Locking	1
22	68861	Stud Link	2	65	68188	Cotter Pin	1
23	68862	Rear Caster Assy.	2	66	68903	Washer	1
24	68863	Bottom Bearing Race	2	67	68904	Cotter Pin	1
25	68864	Ball Set (19)	38	68	68905	Spring	1
26	68865	Top Bearing Race	2	69	68906	Screw	1
27	68193	Lock Washer	2	70	68907	Handle Assy.	1
28	68194	Nut	2	71	68908	Release Rod	1
29	68867	Lock Washer	2	72	68909	Spring Pin	1
30	68868	Nut	2	73	68910	Knob - Release	1
31	68205	"E" Ring	2	74	68911	Lock Washer	1
32	68869	Washer	2	75	68215	Grease Fitting	3
33	68870	Axle - Handle Fork	1	76	69417	Filter	1
34	68871	Return Spring	1	77	68912	Spring Pin	1
35	68872	Rivet	2	78	68913	Spring	1
36	68873	Return Spring	1	79	68914	Cover	1
37	68874	Screw	1	80	68915	Screw	2
38	68875	Frame Body	1	81	68563	Product Decal/Warning (English)	1
39	68876	Saddle	1	82	68565	Product Decal/Warning (French)	1
40	69414	Ball	1	83	68885	Repair Kit (Not included)	1
41	68877	Oil Seal	1				
42	68878	Release Valve	1				
43	68879	Socket Head Cap Screw	1				