

FSJ-60

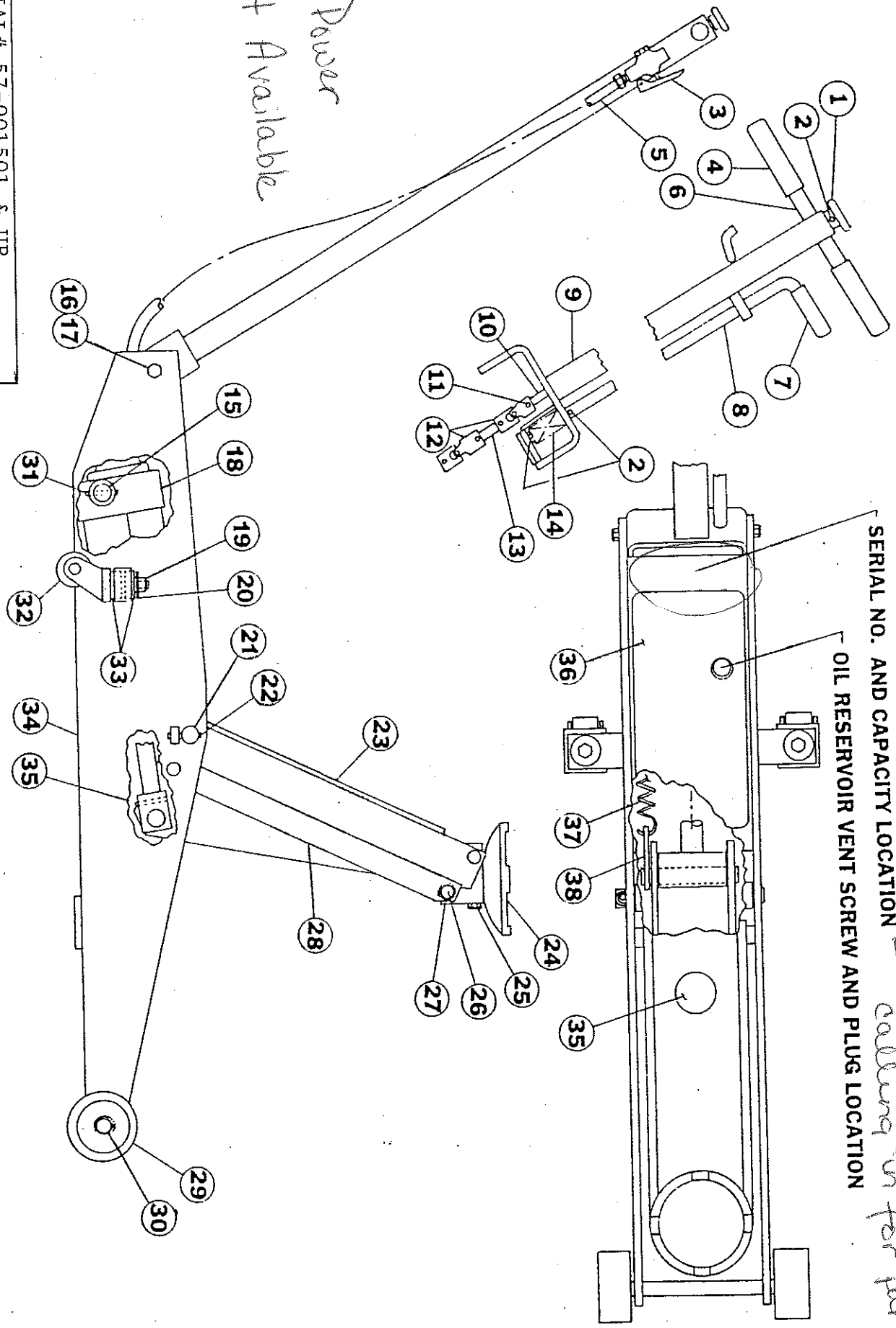
PARTS LIST

SERIAL# 57-001000 & UP

SERIAL NO. AND CAPACITY LOCATION ←

OIL RESERVOIR VENT SCREW AND PLUG LOCATION

Please have when calling in for parts



*No Power
Unit Available*

SERIAL# 57-001501 & UP
CHANGED FROM SWIVEL CASTER TO
STRAIGHT WHEEL P/N 480-00016

PARTS LIST, FSJ-60 JACK

SERIAL# 57-001000 & UP

ITEM	QTY	PART NUMBER	DESCRIPTION
1.	1	1-232-20094	HAND WHEEL
2.	3	0-235-21011	ROLL PIN, 3/16 X 1 1/8
3.	1	1-312-00002	AIR VALVE
4.	2	1-232-20114	GRIP, 7/8 X 5
5.	1	1-271-02001	AIR HOSE, 1/4 X 38
6.	1	1-850-04010	HANDLE BAR, DRILLED
7.	1	1-232-20128	GRIP, 5/8 X 3 1/2
8.	1	1-857-02007	HANDLE RELEASE ROD WELDMENT
9.	1	2-857-02005	HANDLE WELDMENT
10.	1	1-857-04024	RELEASE ROD NOT AVAILABLE
11.	4	0-235-21004	ROLL PIN, 3/16 X 3/4
12.	2	1-232-10004	UNIVERSAL JOINT NIA (REPLACED)
13.	1	1-470-11003	SHAFT, DRILLED ENDS, 1/2 DIA. NIA
14.	1	1-233-14012	SPRING, COMPRESSION, 53/64 O.D.
15.	1	1-857-04020	PIN, CYLINDER, BASE NIA
16.	2	0-200-31407	CAP SCREW, HEX HD 1/2-13 NC X 1/4
17.	2	0-203-01403	NUT, HEX, 1/2-13 NC
18.	1	4-353-40030	HYDRAULIC POWER UNIT OBSOLETE
19.	2	0-203-01705	NUT, HEX LOCK, 3/4 - 10 NC
20.	2	1-204-01709	WASHER, FLAT, 2 X 3/4 X 1/16
21.	1	1-857-04008	PIN, PIVOT NIA
22.	1	0-235-22004	ROLL PIN, 3/8 X 2
23.	1	3-857-02001	LIFT PAD WELDMENT NIA
24.	1	2-857-04027	LIFT PAD
25.	1	0-200-31102	CAP SCREW, HEX HD, 5/16 - 16 NC X 1/2
26.	1	1-470-23025	SHAFT, GROOVED ENDS, 3/4 DIA.
27.	4	1-230-12001	RETAINING RING, EXT, 3/4 DIA.
28.	2	1-857-04010	LINK, LEVELED
29.	2	1-480-00016	WHEEL W/ GREASE FITTING
30.	4	1-440-31004	BEARING ASSY, CUP AND CONE
31.	1	0-235-21002	ROLL PIN, 1/4 X 1 1/2
32.	2	2-857-02006 470-11029	CASTER YOKE WELDMENT 2 5/16 Dia. W
33.	1	4-857-02002	FRAME WELDMENT OBSOLETE
34.	1	0-235-21004	ROLL PIN, 3/16 X 1 1/4
35.	1	1-670-10165	INFO. PLACARD, MADE IN USA
36.	1	3-670-00142	IDENT. PLACARD, FSJ-60
37.	1	1-233-07002	SPRING, EXTENSION
38.	1	1-857-04025	LINK, SPRING OBSOLETE

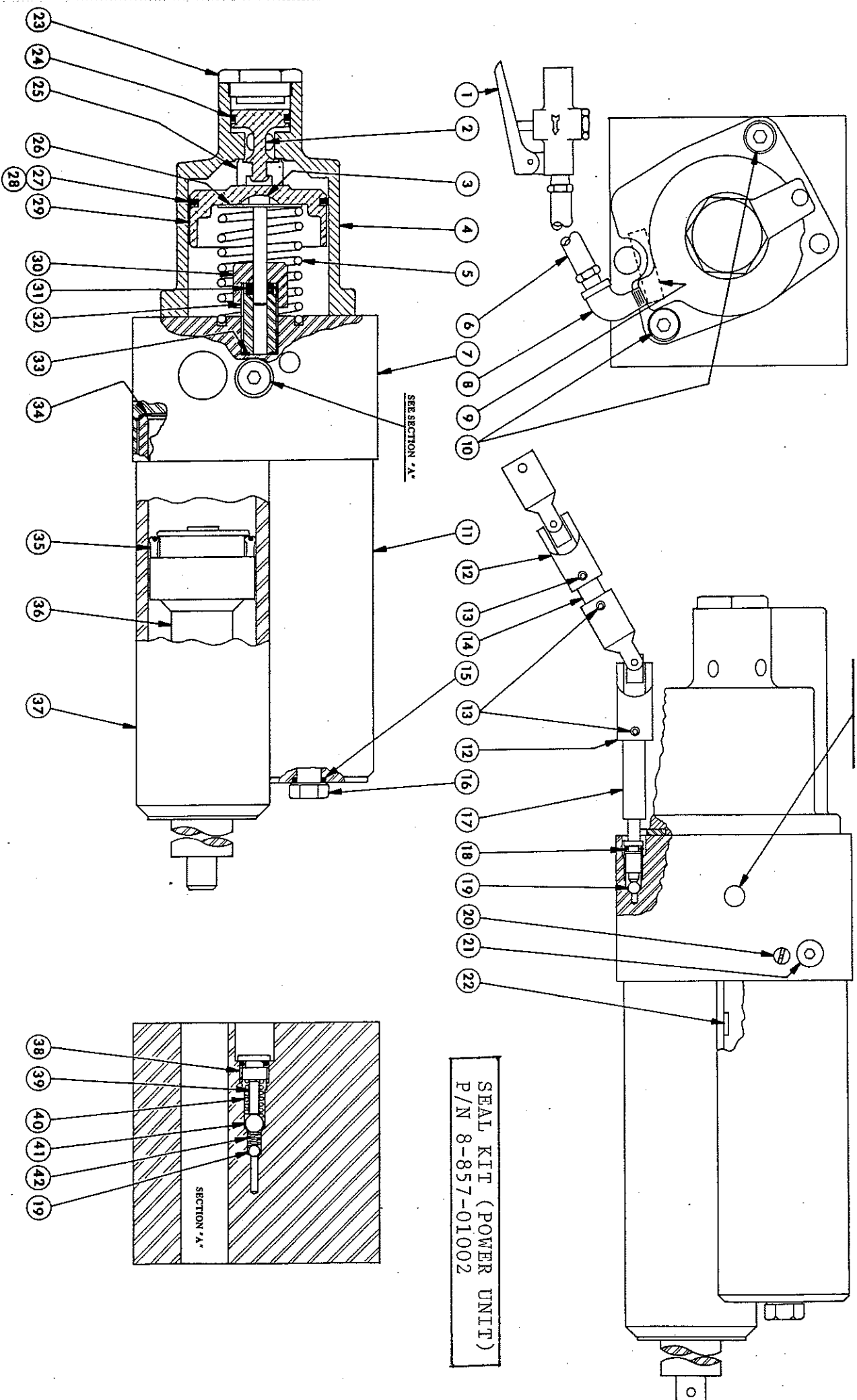
Universal joint replaced by flex shaft # 857-04033

FSJ-60 PARTS LIST

SERIAL# 57-001000 & UP

POWER UNIT

NO SERVICEABLE PARTS
UNDER THE EXPANSION
PLATES



SEAL KIT (POWER UNIT)
P/N 8-857-01002

Seal Kit 8857-01002
SN# 57-001000 thru
57-003000

FSJ-60

Seal Kit 8857-01004
SN# 57-003001 & UP

POWER UNIT

SERIAL# 57-001000 & UP

PARTS LIST

ITEM	QTY	PART NUMBER	DESCRIPTION
1	1	1-312-00002	AIR VALVE
2	1	2-310-40001	AIR SHUTTLE PISTON OBSOLETE
3	1	1-353-49156	PUMP PLUNGER
4	1	3-310-11011	MOTOR HOUSING OBSOLETE
5	1	1-233-15003	SPRING, 1 3/4" O.D.
6	1	1-271-02001	HOSE, 1/4 I.D. X 38" LONG
7	1	4-353-49165	HYDRAULIC BLOCK OBSOLETE
8	1	1-275-10002	STREET ELBOW, 1/8-27 NPT
9	1	8-071-06022	STRIP, 1/8 X 3/8, 1 9/16" LONG
10	2	0-201-11206	SOCKET HEAD CAPSCREW, 3/8-24 UNF X 1" LONG
11	1	1-353-41042	RESERVOIR WELDMENT OBSOLETE
12	2	1-232-10004	UNIVERSAL JOINT 857-04033 flex shaft
13	3	0-235-21004	ROLL PIN, 3/16 DIA. X 3/4" LONG
14	1	1-470-11003	SHAFT OBSOLETE
15	1	0-390-00062	O'RING, 11/16 O.D. X 1/2 I.D.
16	1	0-200-81427	HEX HEAD CAPSCREW, 1/2-20 UNF X 9 3/4" LONG
17	1	1-353-49172	RELEASE STEM
18	1	0-390-00002	O'RING, 3/8 O.D. X 1/4 I.D.
19	2	0-236-00005	BALL, 1/4 DIA.
20	1	1-353-49150	VENT SCREW
21	1	1-274-32001	PLUG W/O'RING
22	1	1-353-49010	MAGNET
23	1	1-310-31005	SHUTTLE VALVE END CAP OBSOLETE
24	1	1-390-01043	O'RING, 1 1/4 O.D. X 1 1/8 I.D.
25	1	2-315-00002	SHUTTLE VALVE SEAL
26	1	1-204-01106	WASHER, 1.750 O.D. X .320 I.D. X .064 THICK
27	1	1-390-01048	O'RING, 2 3/4 O.D. X 2 9/16 I.D.
28	1	1-390-11082	PISTON RING, TEFLON
29	1	2-310-41011	MOTOR PISTON OBSOLETE
30	1	1-353-43029	PUMP HOUSING CAP
31	1	1-390-10058	SEAL, 9/16 O.D. X 5/16 I.D.
32	1	1-353-43030	PUMP HOUSING
33	1	1-390-10060	BACKUP RING, 11/16 O.D. X 1/2 I.D.
34	1	1-390-11087	BACKUP RING, 2 1/4 O.D. X 2 I.D.
35	1	1-390-11088	SEAL, 2 1/4 O.D. X 1 3/4 I.D.
36	1	2-353-42014	PISTON ROD WELDMENT OBSOLETE
37	1	2-353-41040	CYLINDER WELDMENT OBSOLETE
38	1	1-274-34001	PLUG W/O'RING OBSOLETE
39	1	1-353-49162	CHECK VALVE SPACER
40	1	1-233-12002	SPRING, .406 O.D.
41	1	0-236-00006	BALL, 3/8 DIA.
42	1	1-233-10007	SPRING, .250 O.D.

FSJ-60 TROUBLE SHOOTING

PROBLEM: WILL NOT LIFT LOAD

Possible solutions:

- Vent screw is not open or is plugged. Open 1/4 turn and or remove and free blockage.
- Release stem is bent or damaged. Replace if needed
- Release knob is not tight enough. Tighten release knob.
- Check ball is missing from behind the release stem. Install 1/4" steel check ball.
- Unit is low on hydraulic fluid. Replenish with **hydraulic oil only**.
- Air pressure is to low. Raise the PSI going to the jack. PSI should range from 110 to 175 PSI.
- Lifting too much weight. Use a lifting device with a higher lifting capacity.
- Check balls not seating. Remove, clean and re-seat check balls.
- Seals are worn. Replace any worn parts if needed.

PROBLEM: AIR MOTOR IS STALLING

Possible solutions:

- Air pressure is to low. Raise the PSI going to the jack. PSI should range from 110 to 175 PSI.
- Air motor piston needs lubricating. Insert a few drops of air tool oil into the airline and cycle jack.
- Seals or parts are worn. Replace if needed.

PROBLEM: JACK IS SLOWLY LEAKING DOWN

Possible solutions:

- Check balls are not seating. Remove, clean and re-seat check balls.
- Check ball is missing from behind the release stem. Install 1/4" steel check ball.
- Release knob is not tight enough. Tighten release knob.
- Seals or parts are worn. Replace if needed.

HYDRAULIC FLUID LEVEL CHECKING AND FILLING PROCEDURE

1. Make sure lift arm is fully lowered and the jack is placed on a level surface.
2. Remove the plug from the hydraulic power module. It is located beneath the hole in the cover plate on the frame of the jack. Removal requires a 3/16" hex wrench. Make sure the area around the oil reservoir plug is clean and dry before removing plug.
6. Check fluid level. The oil should be visible in the hole for the reservoir plug. If fluid is low, **close the vent screw** and add a high grade hydraulic fluid equivalent to Mobile DTE #11 oil. **CAUTION:** Do not use brake or transmission fluid. Use of the wrong fluid can result in deterioration of the seals or corrosion. Do not overfill. Overfilling can occur if the lift arm is raised, the jack is not on a level surface, or the vent screw is open. Overfilling results in oil leaking from the vent screw until the oil in the reservoir reaches the proper level.
7. Reinstall and secure the fill plug and open the vent screw. Wipe up any spilled oil. Connect to air supply and test for normal operation.