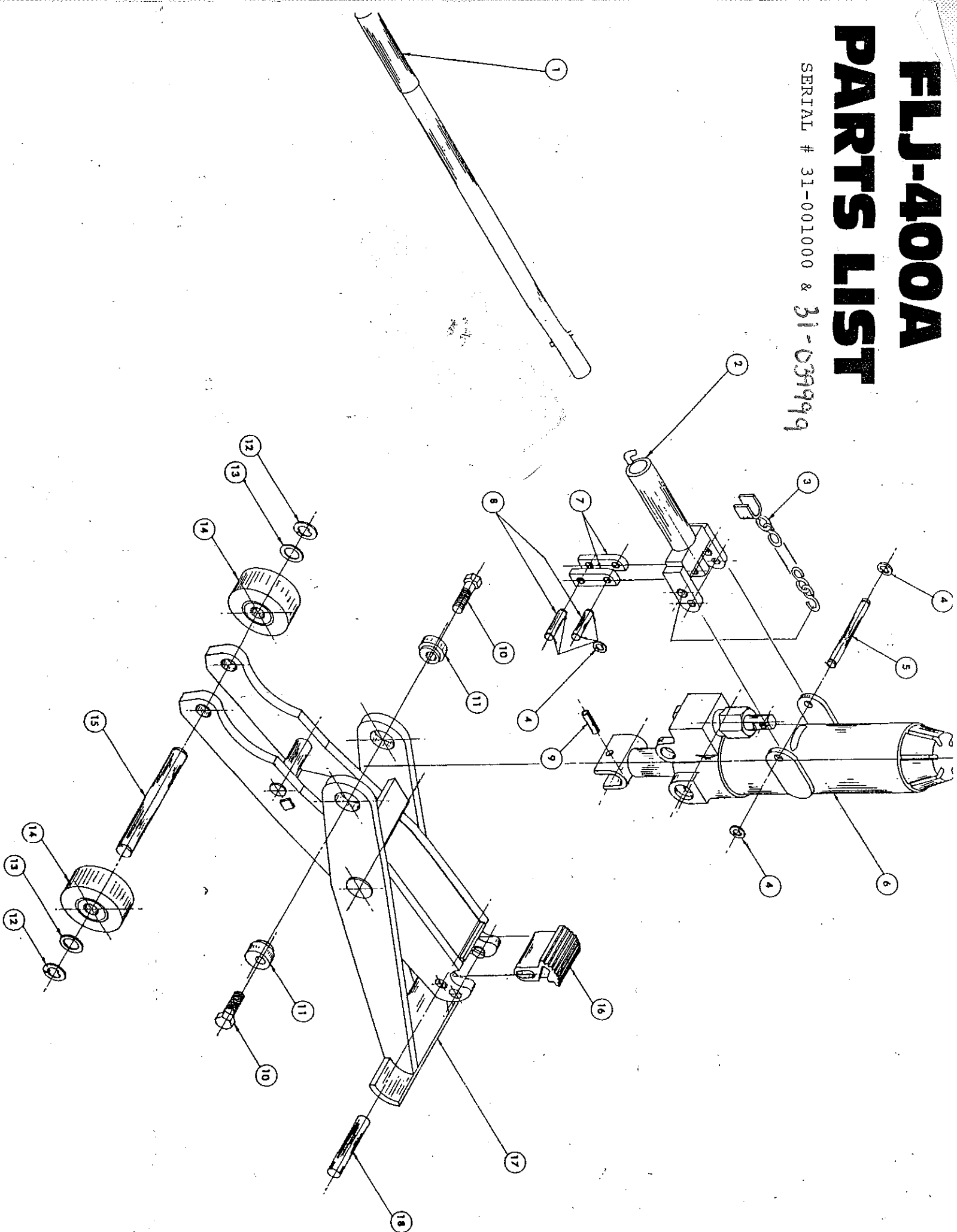


# FLJ-400A

## PARTS LIST

SERIAL # 31-001000 & 31-039999





**Professional  
Service  
Equipment**

## FLJ-400A

Parts List

Serial # 31-001000 & Up

All Prices Subject to Tax & Freight

ITEM	PART NUMBER	PART DESCRIPTION	QTY
1	232-20089	Handle Assembly	1
2	232-20086	Handle Weldment	1
3	831-01001	Handle Lock & Chain	1
4	230-11003	Retaining Ring, 3/8"	6
5	470-20003	Handle Pivot Shaft	1
6	353-40020	Hydraulic Unit	1
7	353-49132	Link	2
8	470-20004	Pump Pin	2
9	235-21003	Roll Pin, 1/4" x 1 1/4"	1
10	202-01403	Capscrew, Self Lockin	2
11	832-04016	Trunnion	2
12	230-12001	Retaining Ring, 3/4"	2
13	204-01704	Washer, 1" ID	2
14	480-01007	Wheel, 3" Dia	2
15	470-23021	Axle	1
16	015-50015	Lift Pad	1
17	831-02002	Frame	1
18	470-52004	Lift Pad Pin	1

3501 S. Leonard Rd.

P.O. Box 728

St. Joseph, MO U.S.A. 64502

1-800-821-7320

(816) 233-6121

FAX (816) 233-7251

or (816) 387-8157

www.grayusa.com

# FLJ-400A HYDRAULIC UNIT PARTS LIST

SERIAL # 31-001000 & UP

## KITS AVAILABLE

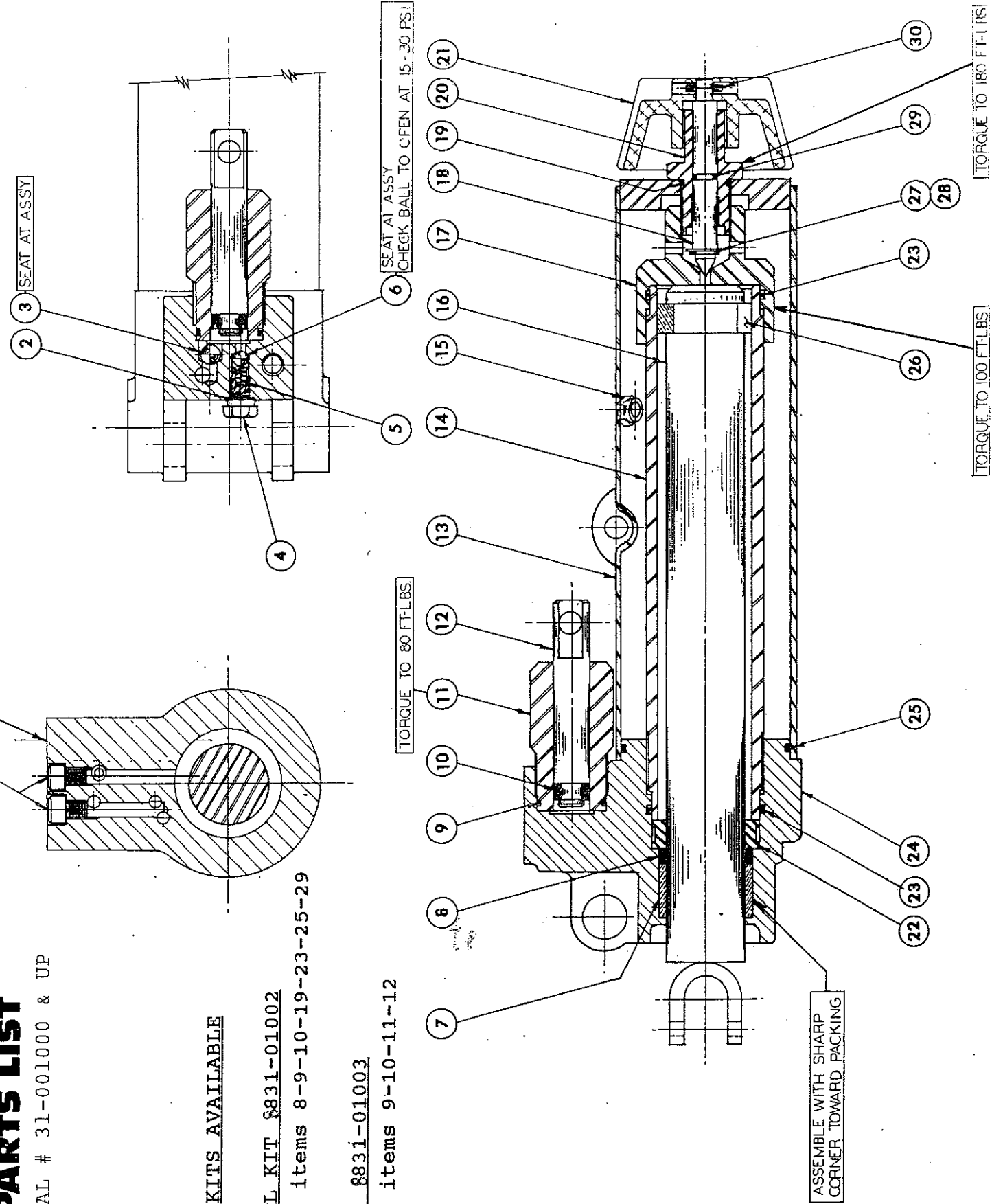
SOFT SEAL KIT 8831-01002

Contains items 8-9-10-19-23-25-29

PUMP KIT 8831-01003

Contains items 9-10-11-12

WARNING: DO NOT TAMPER WITH  
EXPANSION PLUG. HYDRAULIC RELIEF  
IS SET AT FACTORY.



2 SEAT AT ASSY

6 SEAT AT ASSY  
CHECK BALL TO CFEN AT 15-30 PSI

TORQUE TO 80 FT-LBS

ASSEMBLE WITH SHARP  
CORNER TOWARD PACKING

TORQUE TO 100 FT-LBS

TORQUE TO 180 FT-LBS





# FLJ-400A

Parts List

Serial # 31-001000 & uP

Professional  
Service  
Equipment

All Prices Subject to Tax & Freight

Item	Part Number	Part Description	Qty
1	201-01101	Socket Head cap Screw	2
2	390-20007	Gasket, 5/16" ID	3
3	236-00009	Ball, 11/32 ID	1
4	353-49055	Outlet Check Screw	1
5	233-10004	Spring, 1/8" OD	1
6	236-00008	Steel Ball, 7/32 Dia	1
7	441-04002	Bearing, Piston Rod	1
8	390-11010	Seal 1 5/8 OD 1 3/8 ID x 1/4"	1
9	390-01006	O-Ring, 1 1/8 OD., 1" ID	1
10	390-10010	Seal, 5/8" OD., 3/8" ID	1
11	353-49130	Pump Housing	1
12	353-49131	Pump Plunger 	1
13	353-41027	Reservoir	1
14	353-41008	Cylinder	1
15	275-20009	Pipe Plug, 1/8"	1
16	353-44012	Piston Rod	1
17	353-43008	Cylinder Cap	1
18	353-49051	Release Valve Stem	1
19	390-00006	O-Ring, 15/16" OD x 3/4" ID	1
20	353-49047	Retaining Nut	1
21	232-20039	Release Knob 	1
22	353-49058	Oil Port Ring	1
23	390-01004	O-Ring, 2 1/16" OD x 1 7/8" ID	2
24	353-49046	Block	1
25	390-01005	O-Ring, 2 7/8" OD x 2 3/4" ID	1
26	353-44009	Piston Segment	3
27	230-11005	Retaining Ring, 3/8"	1
28	204-01605	Washer, 3/8" ID	1
29	390-00009	O-Ring, 7/16" OD x 5/16 ID	1
30	235-20004	Roll Pin, 1/8" x 5/8"	1

3501 S. Leonard Rd.

P.O. Box 728

St. Joseph, MO U.S.A. 64502

1-800-821-7320

(816) 233-6121

FAX (816) 233-7251

or (816) 387-8157

www.grayusa.com

Not Avail

complete power unit  
OBSOLETE

# MAINTENANCE INSTRUCTIONS:

# FLJ-400 A PLACARD PARTS LIST

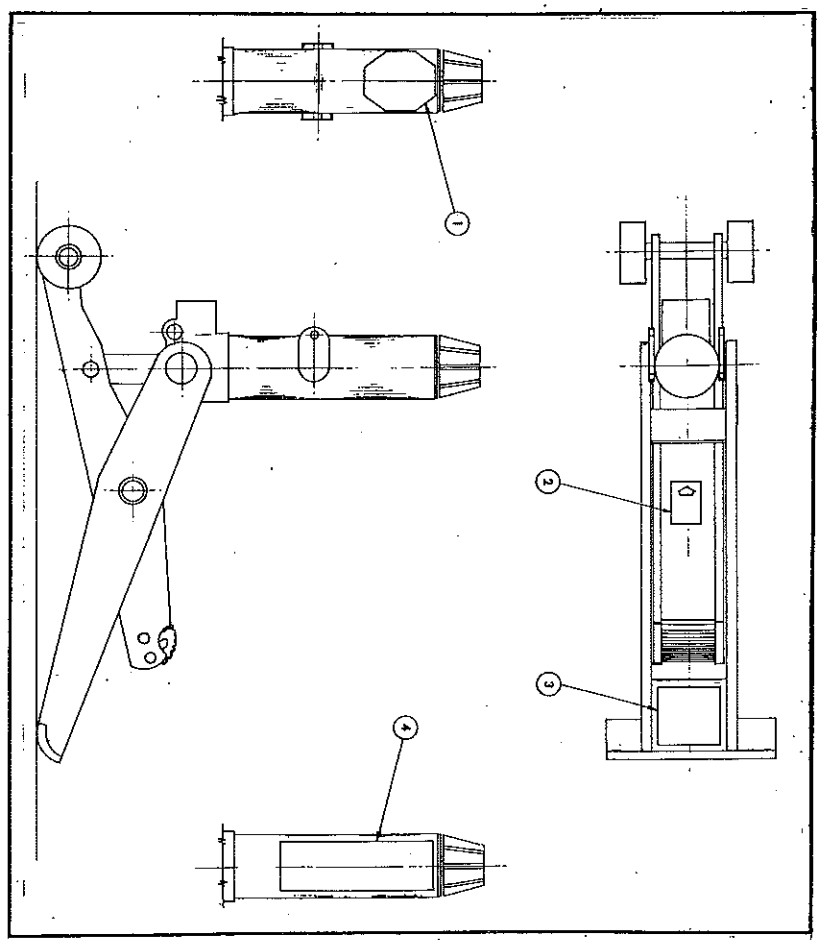
1. Apply several drops of a heavy grade machine oil to the stem of the pump plunger.
2. Oil the handle joints while operating the pump handle to work the oil in.
3. Although the hydraulic unit on the FLJ-400A is a sealed unit and will probably never need fluid added to the reservoir, the following instructions are to be followed in the event fluid is needed:

To refill the reservoir, place the jack in normal upright position, and completely lower jack by opening release knob. Carefully clean dirt and contaminants from around the fill plug and then remove the plug. Add Mobile DTE #23 hydraulic oil to reservoir until fluid runs out the fill plug hole. Do not use brake fluid. (Extreme care should be taken to keep the fluid contaminant free and keep dirt and contaminants out of the reservoir of the jack.) Reinstall fill plug.

# PUMP PRIMING INSTRUCTIONS:

To prime the Model FLJ-400A actuator, in the event that it inadvertently loses its prime in shipment or otherwise, proceed as follows:

1. Open release valve (large red knob on top) approximately 2 full turns.
2. Stroke handle through 2 full cycles, slowly.
3. Raise handle fully up, lay jack over on left side, as viewed from rear. Push handle "down."
4. Stand jack upright again, raise handle to top, lay over on left side and push handle "down" again.
5. Stand jack upright, stroke handle while closing release valve and jack should operate satisfactorily.



ITEM NO.	PART NO.	DESCRIPTION	NO. REC'D
1	1-670-10112	Warning Label (Use Stands to Support Vehicle)	1
2	1-670-10049	Jack Position Placard	1
3	1-670-10015	Lift Pad Instructions	1
4	2-670-00077	Identification Placard, FLJ-400 A	1

## **PRIMING INSTRUCTIONS**

### **FLJ-400 Production Model**

To prime the production model FLJ-400 Actuator — in the event it inadvertently loses its prime in shipment or otherwise, proceed as follows:

1. Raise handle fully up, then give handle an extra 15 or 20 lbs. upward pull to assure pump is in high rate mode of operation.
2. Open release valve (large red knob on top) approximately two (2) full turns.
3. Stroke handle through two (2) full strokes slowly.
4. Raise handle fully up — lay jack over on left side as viewed from rear — push handle in.
5. Stand jack upright again — raise handle to top and lay over on side and push handle in again.
6. Stand jack upright — stroke handle slowly 2 or 3 more times — close release valve and check that jack operates satisfactorily.

If you have any questions, please call Gray Manufacturing Company's Customer Service Department.