



### MODELS

10-121 (1-1/2 TON)	10-124 (8 TON)
10-122 (3 TON)	10-125 (12 TON)
10-123 (5 TON)	10-126 (20 TON)

1964

### PROPER USE

1. Center the cap under the load.
2. Whenever possible have the jack lift in a perpendicular position. Lifting at an angle will place an excessive side strain on the ram.
3. Do not push the load off the jack.
4. Always use axle stands to support vehicle before making under-vehicle repairs.

### OPERATING INSTRUCTIONS

#### A. TO OPERATE

1. Open release valve and pump handle several times. This will eliminate any airbound condition that may have occurred during shipment.
2. Engage the slotted end of the handle with the head of the release screw.
3. Close release valve by turning to right.
4. Insert handle in handle socket and operate the pump.

#### B. IF JACK WILL NOT OPERATE

1. Release valve may be open -- Turn to right to close.
2. No oil in reservoir -- With jack in closed position, place in upright position and add Hydraulic Jack Oil through Filler Plug until oil is level with Filler Hole. **DO NOT USE ALCOHOL, GLYCERINE, BRAKE FLUID, THICK OR DIRTY OIL.**
3. Intake and pressure valves may be held open by foreign matter -- Use operating instructions A-1.
4. Jack will not operate on side -- Jack may have been placed on wrong side. The side to which the handle socket is attached must be down.
5. Too much oil in reservoir -- Too much oil is liable to cause a vacuum bound jack. The oil should be brought to the level of the Filler Plug.

#### C. IF JACK WILL RAISE TO LOAD BUT WILL NOT LIFT IT

1. Release screw may be closed tight enough to raise

ram, but not closed tight enough to lift load.

2. Ram may be at extended height -- Shim jack up.
3. Ram cup may have become injured or porous, allowing oil to pass it.
4. Air under ram -- When there is a quantity of air under the ram, the ram will raise until it hits the load, then it will stay there until there has been sufficient number of pump strokes to compress this air to the proper pressure to lift the load. If this happens, turn jack upside down with ram extended, open release screw and close jack completely. This will cause air to return to oil reservoir.
5. Sticky valves -- Empty all oil from reservoir and refill with gasoline or naphtha. Flush as recommended in operating instructions A-1. Then fill with new Hydraulic Jack Oil.

#### D. IF JACK WILL NOT HOLD LOAD

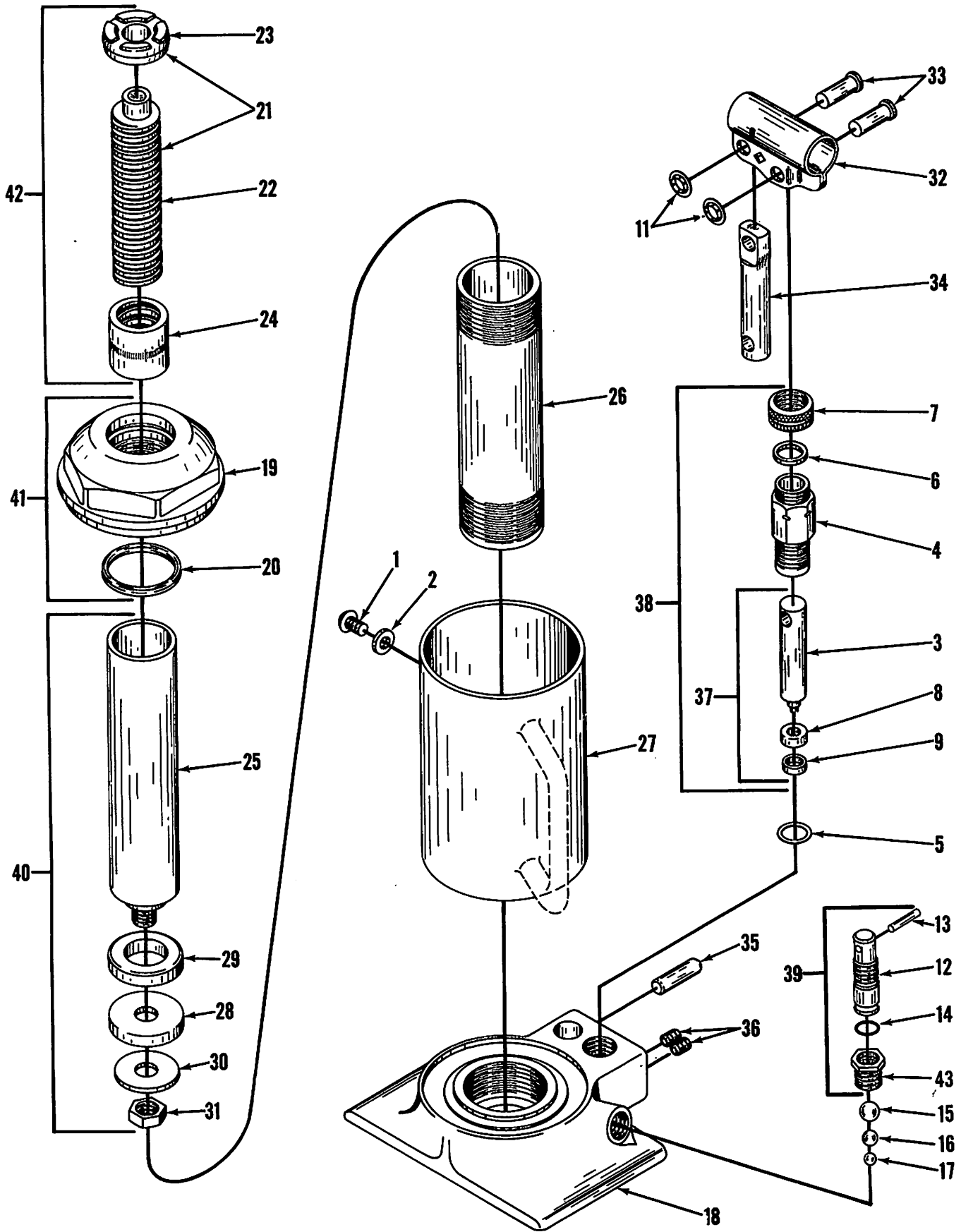
1. Release valve may not be tight enough.
2. Ram cup may have become injured, allowing oil to pass it.
3. Ball valves may not be seated properly -- Flush off as prescribed in operating instructions A-1. The construction of this jack makes the ball valves readily accessible for cleaning. Remove release screw. Remove valves by tipping the jack forward and catching these parts in the hand or a container, place jack on back side with label up to avoid loss of oil. After washing ball valves in kerosene, assemble in reverse order. Replace ball if flat spots or pitted surfaces are found.

### MAINTENANCE INSTRUCTIONS

1. Refill only with recommended Jack Oil. Never use a substitute.
2. Use every precaution to prevent entrance of dirt when refilling jack.
3. Store in upright position in a dry place.
4. When stored, the ram should be lowered completely - the pump piston should be in lowest position and the release valve should be closed.

### LUBRICATION INSTRUCTIONS

1. Oil all moving parts periodically.
2. Grease should be used on exposed parts if jacks are constantly used under wet conditions.



ITEM NO.	NAME OF PART	10-121	10-122	10-123	10-124	10-125	10-126
1	Filler Screw*	D-2001	D-2001	D-2001	D-2001	D-2001	D-2001
2	Filler Screw Washer*	D-2015	D-2015	D-2015	D-2015	D-2015	D-2015
3	Pump Piston	10-11759	10-11759	10-11759	10-11759	10-11759	10-11759
4	Pump Cylinder	D-2444A	D-2444A	D-2444A	D-2444A	D-2444A	D-2444A
5	Piston Cylinder Washer*	D-2027	D-2027	D-2027	D-2027	D-2027	D-2027
6	Pump Wiper*	D-2458	D-2458	D-2458	D-2458	D-2458	D-2458
7	Piston Packing Nut	D-2429	D-2429	D-2429	D-2429	D-2429	D-2429
8	Piston Cup	10-11760	10-11760	10-11760	10-11760	10-11760	10-11760
9	Piston Cup Retainer	10-11761	10-11761	10-11761	10-11761	10-11761	10-11761
11	Pushnut 5/16 (2)*	10-11758	10-11758	10-11758	10-11758	10-11758	10-11758
12	Release Screw	10-12337	10-12337	10-12337	10-12337	10-12337	10-12337
13	Release Screw Pin	D-2051	D-2051	D-2051	D-2051	D-2051	D-2051
14	"O" Ring 5/16x7/16*	D-2099-6	D-2099-6	D-2099-6	D-2099-6	D-2099-6	D-2099-6
15	Valve Ball 13/32 Dia.*	D-2075	D-2075	D-2075	D-2075	D-2075	D-2075
16	Valve Ball 5/16 Dia.*	D-2070	D-2070	D-2070	D-2070	D-2070	D-2070
17	Valve Ball 7/32 Dia.*	D-2074	D-2074	D-2074	D-2074	D-2074	D-2074
18	Base	10-11762	10-11763	10-11764	10-11765	10-11766	10-11767
19	Reservoir Head	10-11768	10-11769	10-11770	10-11771	10-11772	10-11773
20	Quad Ring*	D-2096-17	D-2096-22	D-2096-25	D-2096-25	10-11789	10-11790
21	Extension Screw & Head	10-11906					
22	Extension Screw		D-2428	D-2628	10-11784	10-11801	
23	Ram Head		D-2404A	D-2604A	D-2604A	D-2804A	10-11757
24	Extension Screw Bushing	D-2233	D-2433	D-2633	D-2633	D-2933	
25	Ram	D-2205A	D-2405	D-2605	10-11783	D-2805	10-11779
26	Ram Cylinder	D-2213	D-2413	D-2613	10-11782	D-2813	10-11802
27	Reservoir	D-2223	10-11774	10-11775	10-11776	10-11777	10-11778
28	Ram Cup*	D-2234A	D-2434A	D-2634A	D-2634A	D-2834A	D-3034A
28A	Back Up Washer **	D-2240					
29	Ram Spacer	D-2235B	D-2435A	D-2635A	D-2635A	D-2835A	D-3035A
30	Ram Cup Retainer	D-2236A	D-2436	D-2636	D-2636	D-2836	D-3036
31	Ram Cup Nut	D-2237	D-2237	D-2637	D-2637	D-2637	D-2637
32	Handle Socket	10-11756	10-11755	10-11755	10-11755	10-11755	10-11755
33	Hdle. Socket Link Pin (2)*	CH-1028	CH-1028	CH-1028	CH-1028	CH-1028	CH-1028
34	Piston Link	10-11785	D-2547	D-2547	D-2547	D-2547	D-2547
35	Link Pin	D-2248A	D-2848A	D-2848A	D-2848A	D-2848A	D-2848A
36	Drill Plug (2)	D-2005	D-2005	D-2005	D-2005	D-2005	D-2005
	Label	10-12121	10-12122	10-12123	10-12124	10-12125	10-12126
	Repair Kit	5-577	5-578	5-579	5-579	5-580	5-583
37	Piston Assembly*	19-11866	19-11866	19-11866	19-11866	19-11866	19-11866
38	Pump Assembly	19-11826	19-11826	19-11826	19-11826	19-11826	19-11826
39	Rel. Screw Assembly	19-13357	19-13357	19-13357	19-13357	19-13357	19-13357
40	Ram Assembly	SA-2205A	SA-2405	SA-2605	19-11897	SA-2805	19-11903
41	Reservoir Head Assembly	19-11874	19-11882	19-11892	19-11898	19-11878	19-11904
42	Extension Screw Assembly	19-12042	SA-2428	SA-2628	19-11899	19-11879	
43	Release Screw Insert	10-12338	10-12338	10-12338	10-12338	10-12338	10-12338

\*Denotes items in Repair Kit

\*\*Not illustrated

#### WARRANTY

These Jacks are fully guaranteed against defective material and workmanship when submitted or shipped prepaid to the nearest franchised service depot or the factory, ninety days from the date of delivery to the user. This warranty does not cover jacks that have been altered or attachments added to them which are not recommended by the manufacturer. The use of hydraulic brake or shock absorber fluid, alcohol, Kerosene or other deleterious fluids voids this warranty as does improper use of jacks through overloading or any other abusive practice or accident.