

OWNER/USER INSTRUCTION MANUAL

Please Read Entire Operating Manual Prior to Use!

Blue-Point®

Models SNX2CETJ is a 2 ton capacity floor jack that is a self-contained device designed for lifting, but not sustaining, a partial vehicular load. It consists of a frame with wheels and swivel casters supporting a mechanism that actuates a pivoting lift arm equipped with a saddle. It is designed for use by professional auto mechanics.

SPECIFICATIONS

	SNX2CETJ
Capacity	2 Ton (2000 Kgs)
Low Lift Height	72mm (2.8")
Raised Height	500mm (19.7")
Length	735mm (28.9")
Weight	34 kg (74.9 lbs.)
Chassis Width	335mm (13.2")
Handle Length	1150mm (45.2")
Saddle Diameter	110mm (4.3")



MODEL

SNX2CETJ

2 TON

2,000 KG

SAFE WORKING LOAD

FLOOR JACK

! WARNING



READ, STUDY AND UNDERSTAND THE OPERATING MANUAL PACKED WITH THIS JACK BEFORE OPERATING.

THIS IS A LIFTING DEVICE ONLY. DO NOT MOVE OR DOLLY THE VEHICLE WHILE ON THE JACK. IMMEDIATELY AFTER LIFTING SUPPORT THE VEHICLE WITH APPROPRIATE MEANS.

DO NOT GET UNDER A VEHICLE THAT IS ONLY SUPPORTED BY A TROLLEY/SERVICE JACK—USE VEHICLE SUPPORT STANDS.

USE ONLY ON A HARD LEVEL SURFACE.

DO NOT OVERLOAD. OVERLOADING CAN CAUSE DAMAGE TO OR FAILURE OF THE JACK.

LIFT ONLY ON AREAS OF THE VEHICLE AS SPECIFIED BY THE VEHICLE MANUFACTURER.

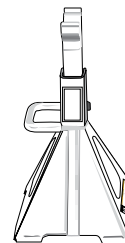
CENTER LOAD ON SADDLE PRIOR TO LIFTING.

NO ALTERATIONS TO THE JACK SHALL BE MADE.

FAILURE TO HEED THESE WARNINGS MAY RESULT IN LOSS OF LOAD, DAMAGE TO JACK, AND/OR FAILURE RESULTING IN PROPERTY DAMAGE, PERSONAL OR FATAL INJURY.

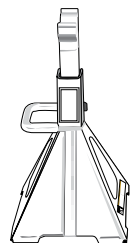
! WARNING

FOR YOUR SAFETY AND TO PREVENT INJURY:

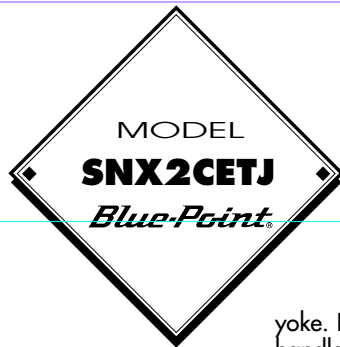


Use Service Jack for lifting purposes ONLY.

Always support vehicle with jack stands.



SAVE THIS MANUAL FOR FUTURE REFERENCE



ASSEMBLY & SET UP INSTRUCTIONS:

PLEASE REFER TO THE EXPLODED VIEW DRAWING IN THIS MANUAL IN ORDER TO IDENTIFY PARTS.

1. Assemble the handle halves (18) and (19) together with the (20) screw provided and tighten.
2. Remove the reference number (17) handle set screw from the reference number (15) handle yoke. Install the assembled handle into the reference number (15) handle yoke making sure the bottom of the handle engages the release valve u-joint reference number (21).
3. Install the reference number (17) handle set screw in the reference number (15) handle yoke and tighten the screw to secure the handle in the yoke.

PURGING AIR FROM THE HYDRAULIC SYSTEM:

- a. Rotate the handle in a clockwise direction until tight. Now turn it in a counterclockwise direction two full turns.
- b. Activate the pump 15 times.
- c. Rotate handle in a clockwise direction until tight.
- d. Activate the pump until the lift arm is raised to maximum height. You should experience a full pump stroke with each incremental pump of the handle.
- e. If it does not feel like you are getting a full incremental pump stroke at anytime during the pumping operation, repeat steps "a" through "d" until all air is purged from the system.

OWNER/USER RESPONSIBILITY

The owner and/or user must have an understanding of the manufacturer's operating instructions and warnings before using this floor jack. Personnel involved in the use and operation of equipment shall be careful, competent, trained, and qualified in the safe operation of the equipment and its proper use when servicing motor vehicles and their components. Warning information should be emphasized and understood. If the operator is not fluent in English, the manufacturer's instructions and warnings shall be read to and discussed with the operator in the operator's native language by the purchaser/owner, making sure that the operator comprehends its contents. Owner and/or user must study and maintain for future reference the manufacturer's instructions. Owner and/or user is responsible for keeping all warning labels and instruction manuals legible and intact. Replacement labels and literature are available from the manufacturer.

INSPECTION

Visual inspection should be made before each use of the floor jack, checking for leaking hydraulic fluid and damaged, loose or missing parts. Each jack must be inspected by a manufacturer's repair facility immediately if accidentally subjected to an abnormal load or shock. Any jack which appears to be damaged in any way, is found to be badly worn, or operates abnormally **MUST BE REMOVED FROM SERVICE** until necessary repairs are made by a manufacturer's authorized repair facility. It is recommended that an annual inspection of the jack be made by a manufacturer's authorized repair facility and that any defective parts, decals or warning labels be replaced with manufacturer's specified parts.

A list of authorized repair facilities is available from the manufacturer.

PREVENTATIVE MAINTENANCE

 This is the safety alert symbol used for the **OPERATING INSTRUCTIONS** section of this manual to alert you to potential personal injury hazards. Obey all instructions to avoid possible injury or death.

1. Always store the jack in a well protected area where it will not be exposed to inclement weather, corrosive vapors, abrasive dust, or any other harmful elements. The jack must be cleaned of water, snow, sand or grit before using.
2. The jack must be lubricated periodically in order to prevent premature wearing of parts. A general purpose grease must be applied to all zerK grease fittings, caster wheels, front axle wheels, elevator arm, handle base pivot bolts, release mechanism and all other bearing surfaces. Periodic lubrication should be subject to a maintenance schedule based on frequency of use. A weekly lubrication schedule is recommended. Premature wearing of components due to lack of, or inadequate lubrication is not eligible for warranty consideration.
3. It should not be necessary to refill or top off the reservoir with hydraulic fluid unless there is an external leak. An external leak requires immediate repair which must be performed in a dirt-free environment by an authorized service center.


WARNING!
READ ALL
INSTRUCTIONS
AND
WARNING
INFORMATION
BEFORE
OPERATION!

PREVENTATIVE MAINTENANCE (Cont.)

IMPORTANT: In order to prevent seal damage and jack failure, never use alcohol, hydraulic brake fluid, or transmission oil in the jack.

4. Every jack owner is responsible for keeping the jack labels clean and readable. Use a mild soap solution to wash external surfaces of the jack but not any moving hydraulic components.
5. Inspect the jack before each use. Do not use the jack if any component is cracked, broken, bent, shows sign of damage or leaks hydraulic fluid. Do not use the jack if it has loose or missing hardware or components, or is modified in any way. Take corrective action before using the jack again. Premature wearing or damage to components caused by loose or missing hardware is not eligible for warranty consideration.
6. Any hydraulic repairs within the warranty period must be performed by an authorized service center.

OPERATING INSTRUCTIONS

 This is the safety alert symbol used for the "OPERATING INSTRUCTIONS" section of this manual to alert you to potential personal injury hazards. Obey all instructions to avoid possible injury or death.

IMPORTANT: Before attempting to raise any vehicle, check vehicle service manual for recommended lifting surfaces.

OPERATION:

1. To raise load:

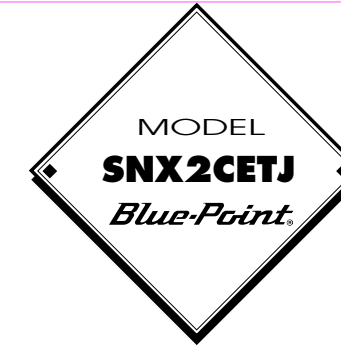
Turn the handle in a clockwise direction until tight. Position the jack under the load. Proceed to pump the handle in order to raise the lift arm to the load. As the saddle at the end of the lift arm gets to the load, reposition the jack so the saddle will contact the load firmly and the load is centered on the saddle. Make sure the saddle is correctly positioned. Raise the load to the desired work height. Place jack stands of appropriate capacity at the vehicle manufacturer's recommended support areas that provide stable support for the raised vehicle. **DO NOT CRAWL UNDER VEHICLE WHILE LIFTING VEHICLE OR REMOVING THE JACK STANDS!** Once jack stands are positioned, turn the handle VERY SLOWLY. Lower the load to rest on the jack stands. Inspect the relationship between the jack stands and load to make sure the setup is stable and safe. If the setup is not stable or safe, follow the preceding steps until corrected.

2. To lower load:

Follow the procedures mentioned in "To raise load" section of the **OPERATING INSTRUCTIONS** in order to raise the load off the jack stands. Once the load has cleared the jack stands, remove the stands from under the load and away from the work area. Turn handle very slowly in a counterclockwise direction until the load is completely lowered to the ground. Once the jack's lifting saddle has cleared the load, remove the jack from under the load.

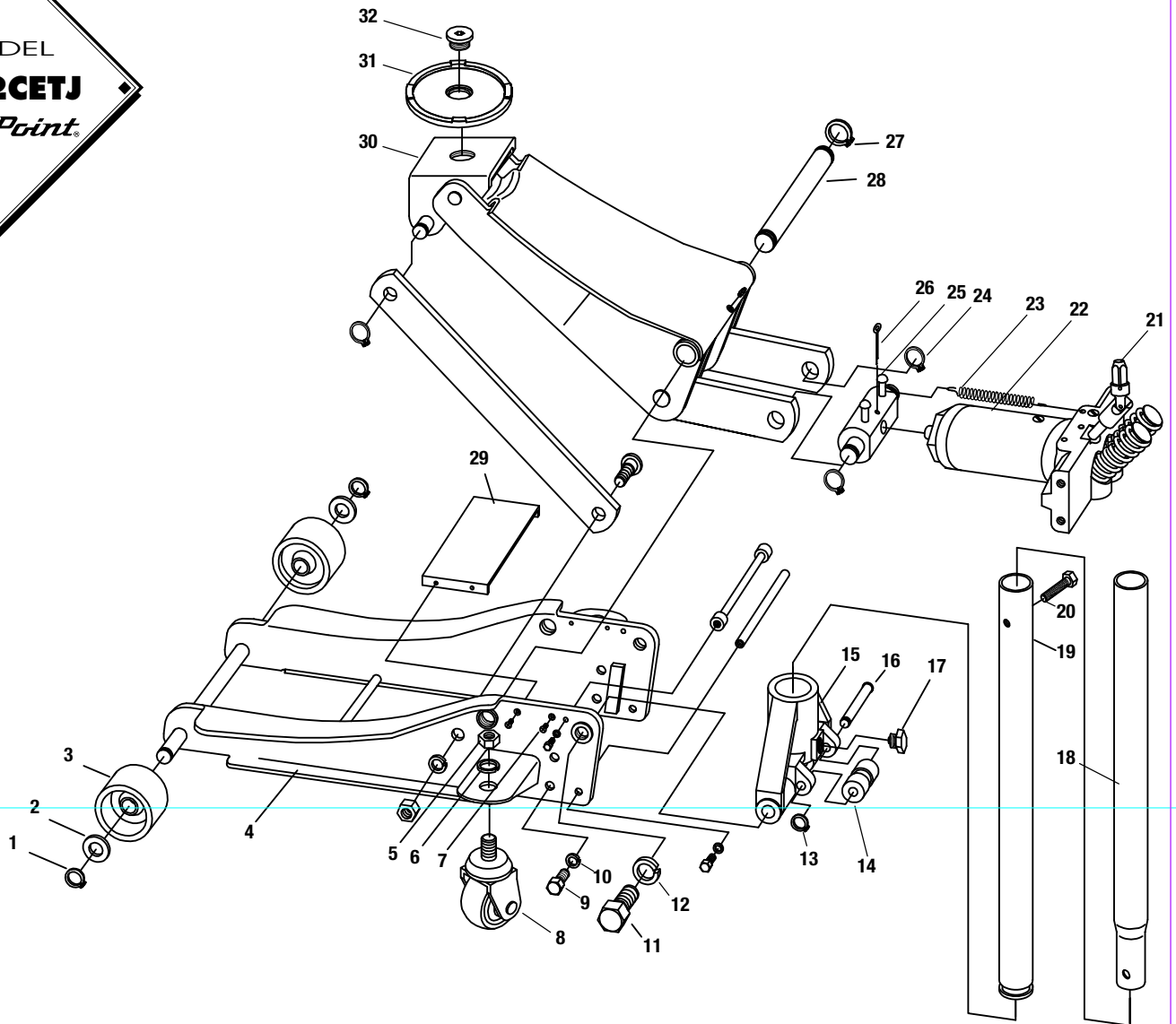
CAUTION: Keep hands and feet away from the hinge mechanism of the jack.

WARNING!
READ ALL
INSTRUCTIONS
AND
WARNING
INFORMATION
BEFORE
OPERATION!



TROUBLESHOOTING

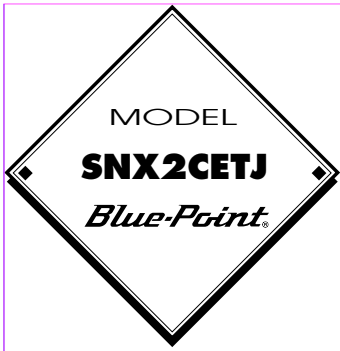
PROBLEM	Jack will not lift load or leaks down excessively	Jack will not lift to its full height	Jack will not lower completely	Jack will not lift smoothly or jack feels spongy	Jack will not hold load or handle rises	SOLUTION
✓						The release valve is not closed. Turn the valve clockwise tightly. If this does not work, remove handle, lubricate handle receptacle and handle end, then retry.
✓	✓					Low on hydraulic fluid. Refill the jack to the correct level of hydraulic fluid, using an approved hydraulic fluid or jack oil.
✓						Follow instructions under "Purging Air from the Hydraulic System" on page 2.
		✓			✓	The hydraulic system has trapped air. Open the release valve, pump handle rapidly (4) full strokes to purge air, close release valve.
			✓			Follow instructions under "Purging Air from the Hydraulic System" on page 2.
					✓	Discharge ball is not sealing hydraulic system and oil may be dirty. Manually flush hydraulic system. Open the release valve, as required, to raise and lower the lift arm. Manually raise and lower lift arm. (Must be serviced by a qualified service center)



WARNING!
 READ ALL
 INSTRUCTIONS
 AND
 WARNING
 INFORMATION
 BEFORE
 OPERATION!

Index No.	Part No.	Description	Q'TY	Index No.	Part No.	Description	Q'TY
1*	SNX2CETJ01	Retaining Ring 20	2	19	SNX2CETJ19	Handle, Lower Section	1
2*	SNX2CETJ02	Washer 20	2	20*	SNX2CETJ20	Screw M6 x 35	1
3	SNX2CETJ03	Front Wheel	2	21	SNX2CETJ21	U-Joint	1
4	SNX2CETJ04	Side Plate Assembly	1	22	SNX2CETJ22	Power Unit Assembly	1
5*	SNX2CETJ05	Nut M16	4	23	SNX2CETJ23	Return Spring	2
6*	SNX2CETJ06	Washer 16	4	24*	SNX2CETJ24	Retaining Ring 22	2
7*	SNX2CETJ07	Screw M5 x 12	4	25	SNX2CETJ25	Power Unit Adaptor	1
8	SNX2CETJ08	Rear Caster Assembly	2	26*	SNX2CETJ26	Pin A4 x 55	1
9*	SNX2CETJ09	Screw M10 x 20	4	27*	SNX2CETJ27	Retaining Ring 25	2
10*	SNX2CETJ10	Washer 10	4	28	SNX2CETJ28	Lift Arm Bolt	1
11*	SNX2CETJ11	Bolt	2	29	SNX2CETJ29	Cover Plate	1
12*	SNX2CETJ12	Washer 18	2	30	SNX2CETJ30	Lift Arm Assembly	1
13*	SNX2CETJ13	Retaining Ring 12	1	31	SNX2CETJ31	Saddle	1
14	SNX2CETJ14	Pump Roller	1	32	SNX2CETJ32	Saddle Screw	1
15	SNX2CETJ15	Handle Socket	1	34	SNX2CETJ34	Seal Kit	1
16	SNX2CETJ16	Pump Roller Bolt	1	35	SNX2CETJ35	Hardware Kit	1
17	SNX2CETJ17	Handle Set Screw	1				
18	SNX2CETJ18	Handle, Upper Section	1				

Part numbers with * are only available in hardware kit



CE Déclaration de Conformité (FR)	Nous déclarons sous notre propre responsabilité que ces produits sont en conformité avec les normes et documents normalisés : directive 98/37/CE
CE Konformitäts-erklärung (DE)	Wir erklären in alleiniger Verantwortung, dass dieses Produkt mit den folgenden Normen oder normativen Dokumenten übereinstimmt: Richtlinie 98/37/EG.
CE Declaration of Conformity (GB)	We declare under our sole responsibility that these products are in conformity with the following standards or standardization documents: directive 98/37/EC
CE Declaración de Conformidad (ES)	Declaramos bajo nuestra responsabilidad que este producto está en conformidad con las normas o documentos normalizados siguientes: las regulaciones 98/37/CE
CE Declaração de conformidade (PT)	Declaramos sob nossa exclusiva responsabilidade que este produto cumpre as seguintes normas ou documentos normativos/diretivas 98/37/CE.
CE Dichiarazione di conformità (IT)	Assumendone la piena responsabilità, dichiariamo che il prodotto è conforme alle seguenti normative ed ai relativi documenti: direttiva CE 98/37.
CE Conformiteit (ND)	Dit gereedschap voldoet aan de volgende normen of heeft de betreffende certificaten: 98/37/EG.
CE EU-overensstemmelseserklæring (DK)	Vi erklærer under almindeligt ansvar, at dette produkt er i overensstemmelse med følgende standarder eller normative dokumenter: EF-direktivet 98/37/EF
CE Försäkring om överensstämmelse (SE)	Vi försäkrar härmed under exklusivt ansvar att denna produkt överensstämmer med följande normer och harmoniserade standarder: direktiven 98/37/EG.
CE Samsvars-erklæring (NO)	Vi erklærer at det er under vårt ansvar at dette produktet er i overensstemmelse med følgende standarder eller standard-dokumenter: direktiv 98/37/EF.
CE Todistus standardinmukaisuudesta (FI)	Todistamme läten ja vastaamme yksin siitä, että tämä tuote on alla lueteltujen standardien ja standardoimisasiakirjojen vaatimusten mukainen direktiivin määräysten mukaisesti: 98/37/EY.
CE Deklaracja zgodności (PL)	Deklarujemy zgodność niniejszymi wymienionymi narzędziami z następującymi normami: dyrektywa unijna 98/37/CE
CE Prohlášení o shodě (CZ)	Prohláujeme na svou vlastní odpovědnost, že tyto výrobky jsou v souladu s následujícími normami nebo standardizovanou dokumentací podle opatření směrnice 98/37/ES
CE Prehľadzenie o zhode (SK)	Prehlasujeme na svoju vlastnú zodpovednosť, že tieto výrobky sú v súlade s nasledujúcimi normami alebo štandardizovanou dokumentáciou podľa opatrenia smernice 98/37/ES
CE Πιστοποίηση Ποιότητας (GR)	Δηλώνουμε με δική μας ευθύνη ότι αυτό το προϊόντα είναι σύμφωνα με τα ακόλουθα πρότυπα ή έγγραφα πιστοποίησης: οδηγίες 98/37/CE.
CE Standardizasyon beyanı (TU)	Yegane sorumlulu olarak, bu ürünün aşağıdaki standartlara veya standart belgelerine uygun olduğunu beyan ederiz: 98/37AT yönetmeliği hükümleri.

