

Please Read Entire Operating Manual Prior to Use!

Blue-Point[®]

20 TONNE
20,000 KG
SAFE WORKING
LOAD

**AIR/HYDRAULIC
JACK**

Model SNX20AHJ is an air/hydraulic service jack in which the lift arm is actuated by a mechanism that utilizes a relatively incompressible fluid, such as oil, as the force transmitting means, actuated by a pneumatic power source.



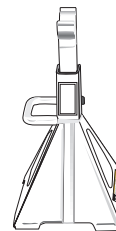
!WARNING



USE ONLY ON HARD LEVEL SURFACES.
DO NOT GET UNDER A VEHICLE THAT IS ONLY SUPPORTED BY A TROLLEY/SERVICE JACK—USE VEHICLE SUPPORT STANDS.
THIS IS A LIFTING DEVICE ONLY. DO NOT MOVE OR DOLLY THE VEHICLE WHILE ON THE JACK. IMMEDIATELY AFTER LIFTING, SUPPORT THE VEHICLE WITH APPROPRIATE MEANS.
DO NOT OVERLOAD. OVERLOADING CAN CAUSE DAMAGE TO OR FAILURE OF THE JACK.
LIFT ONLY ON AREAS OF THE VEHICLE AS SPECIFIED BY THE VEHICLE MANUFACTURER.
CENTER LOAD ON SADDLE PRIOR TO LIFTING. OFF-CENTER LOADS MAY CAUSE DAMAGE TO JACK, LOSS OF LOAD, PROPERTY DAMAGE, PERSONAL OR FATAL INJURY.
NO ALTERATIONS TO THE JACK SHALL BE MADE.
READ, STUDY AND UNDERSTAND THE OPERATING MANUAL PACKED WITH THIS JACK BEFORE OPERATING.
FAILURE TO HEED THESE WARNINGS MAY RESULT IN LOSS OF LOAD, DAMAGE TO JACK, AND/OR FAILURE RESULTING IN PROPERTY DAMAGE, PERSONAL OR FATAL INJURY.

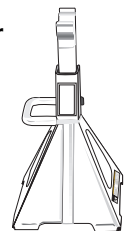
!WARNING

FOR YOUR SAFETY AND TO PREVENT INJURY:



Use Service Jack for lifting purposes ONLY.

Always support vehicle with jack stands.





SNX20AHJ SPECIFICATIONS

Capacity . . .20 Tonne (20,000 kg.)	Handle Length1244 mm
Min. Saddle Height225 mm	Wheel Diameter203 mm
Max. Saddle Height440 mm	Dimensions . . .539Lx325Wx1429H mm
Stroke121mm	

OWNER/USER RESPONSIBILITY

The owner and/or user must have a thorough understanding of the manufacturer's operating instructions and warnings before using this service jack. Personnel involved in the use and operation of equipment shall be careful, competent, trained, and qualified in the safe operation of the equipment and its proper use when servicing motor vehicles and their components. Warning information should be emphasized and understood. If the operator is not fluent in English, the manufacturer's instructions and warnings shall be read to and discussed with the operator in the operator's native language by the purchaser/owner, making sure that the operator comprehends its contents.

Owner and/or user must study and maintain for future reference the manufacturer's instructions. Owner and/or user is responsible for keeping all warning labels and instruction manuals legible and intact. Replacement labels and literature are available from the manufacturer.

INSPECTION

Visual inspection should be made before each use of the service jack, checking for leaking hydraulic fluid and damaged, loose or missing parts. Each jack must be inspected by a manufacturer's repair facility immediately, if accidentally subjected to an abnormal load or shock. Any jack which appears to be damaged in any way, found to be badly worn, or operates abnormally **MUST BE REMOVED FROM SERVICE** until necessary repairs are made by a manufacturer's authorized repair facility. It is recommended that an annual inspection of the jack be made by a manufacturer's authorized repair facility and that any defective parts, decals or warning labels be replaced with manufacturer's specified parts.

A list of authorized repair facilities is available from the manufacturer.

WARNING!

READ ALL
INSTRUCTIONS
AND
WARNING
INFORMATION
BEFORE
OPERATION!



OPERATING INSTRUCTIONS

IMPORTANT: Before attempting to raise a vehicle, check vehicle service manual for recommended lifting surfaces.

1. To raise load: Close release valve tightly (by turning handle knob clockwise). **DO NOT OVERTIGHTEN.** Position jack under load so that saddle will contact load firmly and load is centered so it cannot slip. Operate the air valve until saddle approaches the load. Once again check to see that saddle is correctly positioned. Raise load to desired height. Place jack stands of appropriate capacity under the vehicle. **DO NOT CRAWL UNDER VEHICLE WHILE LIFTING VEHICLE OR PLACING OR REMOVING JACK STANDS!** Place jack stands at vehicle manufacturer's recommended lift areas that provide stable support for the raised vehicle.

2. To lower load: Open release valve VERY SLOWLY (by turning handle knob counterclockwise). When release valve is opened, saddle and load will be lowered. Lower the vehicle slowly so as not to shock load the jack stands. Once repairs are completed, raise vehicle enough to remove jack stands. Lower vehicle very slowly.

CAUTION: Keep hands or feet away from the hinge mechanism of the jack.

MAINTENANCE INSTRUCTIONS

IMPORTANT! Use only a good grade hydraulic jack oil. Avoid mixing types of oil. Do not use brake fluid, alcohol, glycerin, detergent motor oil, or dirty oil. Improper fluid can cause serious internal damage to the jack, rendering it inoperative.

To Add Oil: With saddle fully lowered and ram depressed, set jack in an upright position and remove oil filler plug. Fill until oil is level with filler plug hole.

To Change Oil: For best performance and longest life, replace the complete oil supply at least once a year. To drain the oil, remove the filler plug. Lay the jack on its side and allow the oil to run out into suitable drain pan. The oil will run slowly because air must enter as oil drains out. Be careful to prevent dirt or foreign matter from entering the system. Replace with proper oil.

LUBRICATION

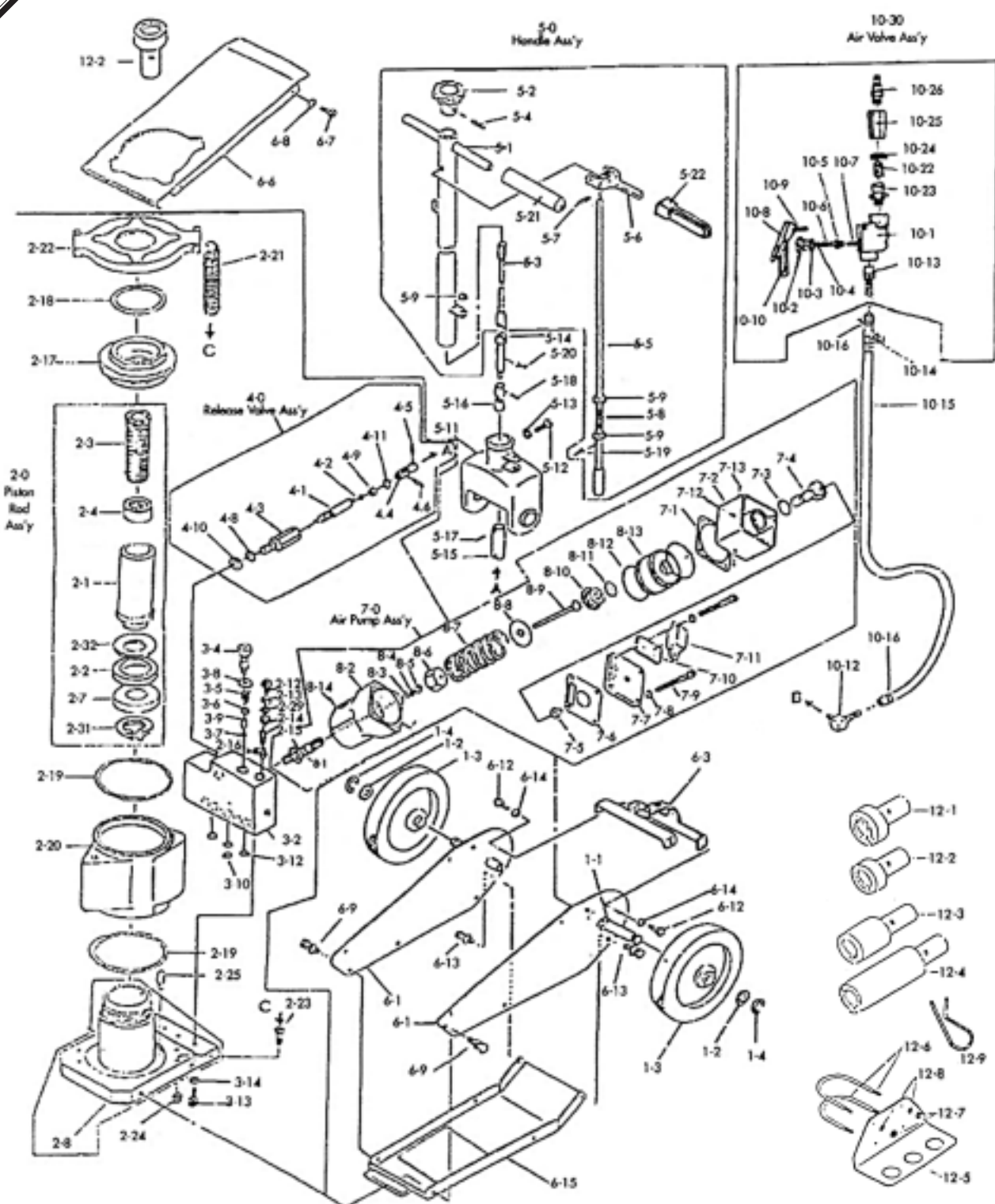
All moving joints require lubrication often. Remove handle and grease the lower end of handle where the release mechanism rotates in the handle socket.

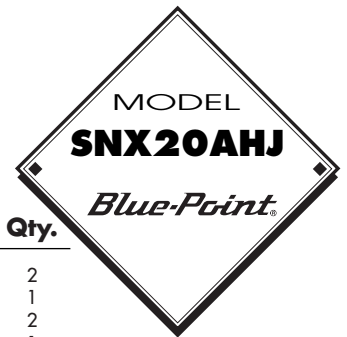
WARNING!

READ ALL
INSTRUCTIONS
AND
WARNING
INFORMATION
BEFORE
OPERATION!

MODEL
SNX20AHJ
Blue-Point

WARNING!
 READ ALL
 INSTRUCTIONS
 AND
 WARNING
 INFORMATION
 BEFORE
 OPERATION!





Item No.	Part No.	Description	Qty.	Item No.	Part No.	Description	Qty.
1-1	20AHJ1-1	Wheel Shaft	2	5-21	20AHJ5-21	Handle Cap	2
1-2	20AHJ1-2	Washer	2	5-22	20AHJ5-22	Handle Cap	1
1-3	20AHJ1-3	Wheel	2	6-1	20AHJ6-1	Handle Fork Bracket	2
1-4	20AHJ1-4	Snap Ring	2	6-3	20AHJ6-3	Frame	1
2-0	20AHJ2-0	Piston Rod Ass'y	1	6-6	20AHJ6-6	Upper Cover	1
2-1	20AHJ2-1	Piston Rod	1	6-7	20AHJ6-7	Machine Screw	4
2-2	20AHJ2-2	Packing	1	6-8	20AHJ6-8	Lock Washer	4
2-3	20AHJ2-3	Screw	1	6-9	20AHJ6-9	Bolt	4
2-4	20AHJ2-4	Bush	1	6-12	20AHJ6-12	Bolt	4
2-7	20AHJ2-7	Packing Retainer	1	6-13	20AHJ6-13	Bolt	4
2-8	20AHJ2-8	Cylinder	1	6-14	20AHJ6-14	Spring Washer	4
2-12	20AHJ2-12	Bolt	2	6-15	20AHJ6-15	Lower Cover	1
2-13	20AHJ2-13	Packing	2	7-0		Air Pump Ass'y	1
2-14	20AHJ2-14	Spring Retainer	1	7-1	20AHJ7-1	Packing Washer	1
2-15	20AHJ2-15	Safety Valve	1	7-2	20AHJ7-2	Muffler Cover	1
2-16	20AHJ2-16	Spring	1	7-3	20AHJ7-3	O Ring 23.6 x 3.55	1
2-17	20AHJ2-17	Nut	1	7-4	20AHJ7-4	Valve Rod	1
2-18	20AHJ2-18	Oil Seal	1	7-5	20AHJ7-5	Rubber Pad	1
2-19	20AHJ2-19	O Ring	2	7-6	20AHJ7-6	Packing Washer	1
2-20	20AHJ2-20	Oil Tank	1	7-7	20AHJ7-7	Cover	1
2-21	20AHJ2-21	Spring	4	7-8	20AHJ7-8	Spring Washer	1
2-22	20AHJ2-22	Spring Nuncer	1	7-9	20AHJ7-9	Hex Socket Screw M8 x 70	4
2-23	20AHJ2-23	Machine Screw	4	7-10	20AHJ7-10	Filter Element	1
2-24	20AHJ2-24	Nut	4	7-11	20AHJ7-11	Filter Cover	1
2-25	20AHJ2-25	Oil Strainer	1	7-12	20AHJ7-12	ø2.5 Steel Ball	1
2-29	20AHJ2-29	Packing	1	7-13	20AHJ7-13	ø6 Steel Ball	2
2-31	20AHJ2-31	Snap Ring	1	8-1	20AHJ8-1	Plunger Cover	1
2-32	20AHJ2-32	Back-up Ring	1	8-2	20AHJ8-2	Air Pump Body	1
3-2	20AHJ3-2	Oil Box	1	8-3	20AHJ8-3	NL Retainer	1
3-4	20AHJ3-4	Bolt	1	8-4	20AHJ8-4	O Ring 11.2 x 2.65	1
3-5	20AHJ3-5	Spring	1	8-5	20AHJ8-5	Packing Guide	1
3-6	20AHJ3-6	Steel Ball	1	8-6	20AHJ8-6	Nut	1
3-7	20AHJ3-7	Steel Ball	1	8-7	20AHJ8-7	Spring	1
3-8	20AHJ3-8	Copper Packing	1	8-8	20AHJ8-8	Washer	1
3-9	20AHJ3-9	Separator	1	8-9	20AHJ8-9	Plunger	1
3-10	20AHJ3-10	Back-up Ring	1	8-10	20AHJ8-10	Retainer	1
3-12	20AHJ3-12	O Ring	3	8-11	20AHJ8-11	O Ring 25 x 3.55	1
3-13	20AHJ3-13	Bolt	3	8-12	20AHJ8-12	O Ring 56 x 5.30	2
3-14	20AHJ3-14	Spring Washer	3	8-13	20AHJ8-13	Piston	1
4-0	20AHJ4-0	Release Valve Ass'y	1	8-14	20AHJ8-14	ø3 Steel Ball	2
4-1	20AHJ4-1	Valve	1	10-30	20AHJ10-30	Air Valve Ass'y	1
4-2	20AHJ4-2	O Ring	1	10-1	20AHJ10-1	Valve Body	1
4-3	20AHJ4-3	Guide	1	10-2	20AHJ10-2	Nut	1
4-4	20AHJ4-4	Universal Joint	1	10-3	20AHJ10-3	O Ring	1
4-5	20AHJ4-5	Spring Pin	1	10-4	20AHJ10-4	O Ring	1
4-6	20AHJ4-6	Spring Pin	1	10-5	20AHJ10-5	Packing	1
4-8	20AHJ4-8	O Ring	1	10-6	20AHJ10-6	Throttle	1
4-9	20AHJ4-9	Washer	1	10-7	20AHJ10-7	Spring	1
4-10	20AHJ4-10	Packing	1	10-8	20AHJ10-8	Lever	1
4-11	20AHJ4-11	Snap Ring	1	10-9	20AHJ10-9	Lever Pin	1
5-0	20AHJ5-0	Handle Ass'y	1	10-10	20AHJ10-10	Lock Lever	1
5-1	20AHJ5-1	Handle	1	10-12	20AHJ10-12	Pump Elbow	1
5-2	20AHJ5-2	Knob	1	10-13	20AHJ10-13	Hose Connector	1
5-3	20AHJ5-3	Connecting Rod	1	10-14	20AHJ10-14	Spring	1
5-4	20AHJ5-4	Spring Pin	1	10-15	20AHJ10-15	Air Hose	1
5-5	20AHJ5-5	Stopper	1	10-16	20AHJ10-16	Hose Band	2
5-6	20AHJ5-6	Lock Lever	1	10-22	20AHJ10-22	Air Filter	1
5-7	20AHJ5-7	Spring Pin	1	10-23	20AHJ10-23	Connector	1
5-8	20AHJ5-8	Spring	1	10-24	20AHJ10-24	O Ring	1
5-9	20AHJ5-9	Washer	3	10-25	20AHJ10-25	Connecting Nut	1
5-11	20AHJ5-11	Handle Fork	1	10-26	20AHJ10-26	Connector	1
5-12	20AHJ5-12	Bolt	1	12-1	20AHJ12-1	Adaptor-A 70 x 20	1
5-13	20AHJ5-13	Spring Washer	1	12-2	20AHJ12-2	Adaptor-B 50 x 20	1
5-14	20AHJ5-14	Connecting Rod	1	12-3	20AHJ12-3	Adaptor C 50 x 50	1
5-15	20AHJ5-15	Connecting Rod	1	12-4	20AHJ12-4	Adaptor D 50 x 100	1
5-16	20AHJ5-16	Universal Joint	1	12-5	20AHJ12-5	Holder Adaptor	1
5-17	20AHJ5-17	Spring Pin	1	12-6	20AHJ12-6	U-Bolt	2
5-18	20AHJ5-18	Spring Pin	1	12-7	20AHJ12-7	Nut	4
5-19	20AHJ5-19	Spring Pin	1	12-8	20AHJ12-8	Spring Washer	4
5-20	20AHJ5-20	Cotter Pin	1	12-9	20AHJ12-9	Hiitch Pin	4

WARNING!

READ ALL
INSTRUCTIONS
AND
WARNING
INFORMATION
BEFORE
OPERATION!

PROBLEM	Jack will not lift load	Jack will not hold load or handle rises	Jack will not lift to its full height	Jack will not lower completely	Jack will not lift smoothly or jack feels spongy	SOLUTION
✓						The release valve is not closed. Turn the valve clockwise tightly.
✓		✓				Low on hydraulic fluid. Refill the jack to the correct level of hydraulic fluid.
✓						Pump seals and back-up ring are defective. Clean hydraulic fluid passages, replace seals and renew hydraulic fluid. (Must be serviced by qualified service center)
		✓		✓		The hydraulic system is filled with air. Open the release valve, pump handle rapidly (4) full strokes to purge air, close release valve.
			✓			Return spring is broken or linkages binding. Replace spring if broken. Grease pivot shaft, oil all lift arm linkages.
	✓					Discharge ball is not sealing hydraulic system and oil may be dirty. Manually flush hydraulic system by raising and lowering lift arm by hand. Open the release valve, as required to raise and lower the lift arm. Manually raise and lower lift arm.