

3  
**BLACKHAWK®**

CATEGORY A

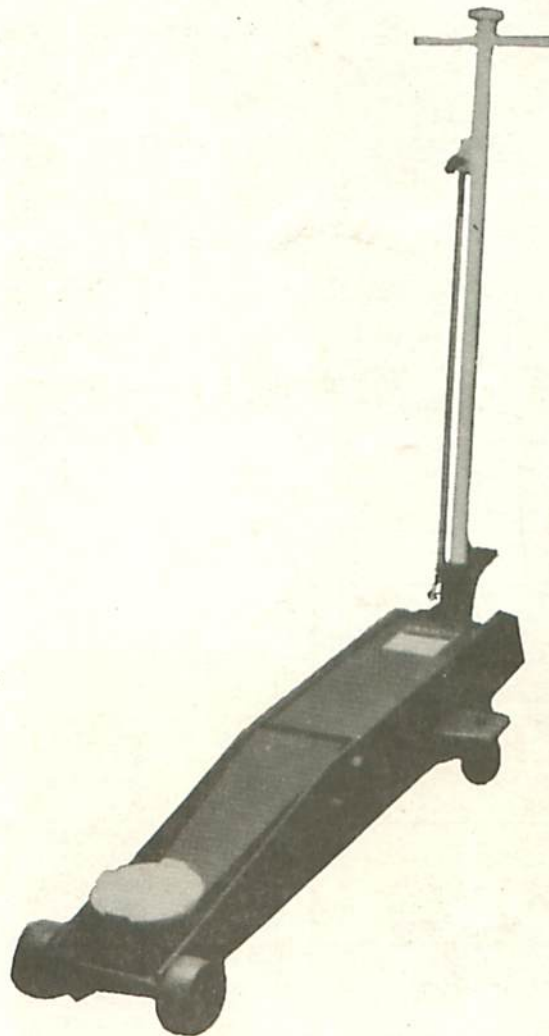
MODEL NUMBER

**67414**

SAME AS WINNER 68046

## REPAIR PARTS LIST

FOR



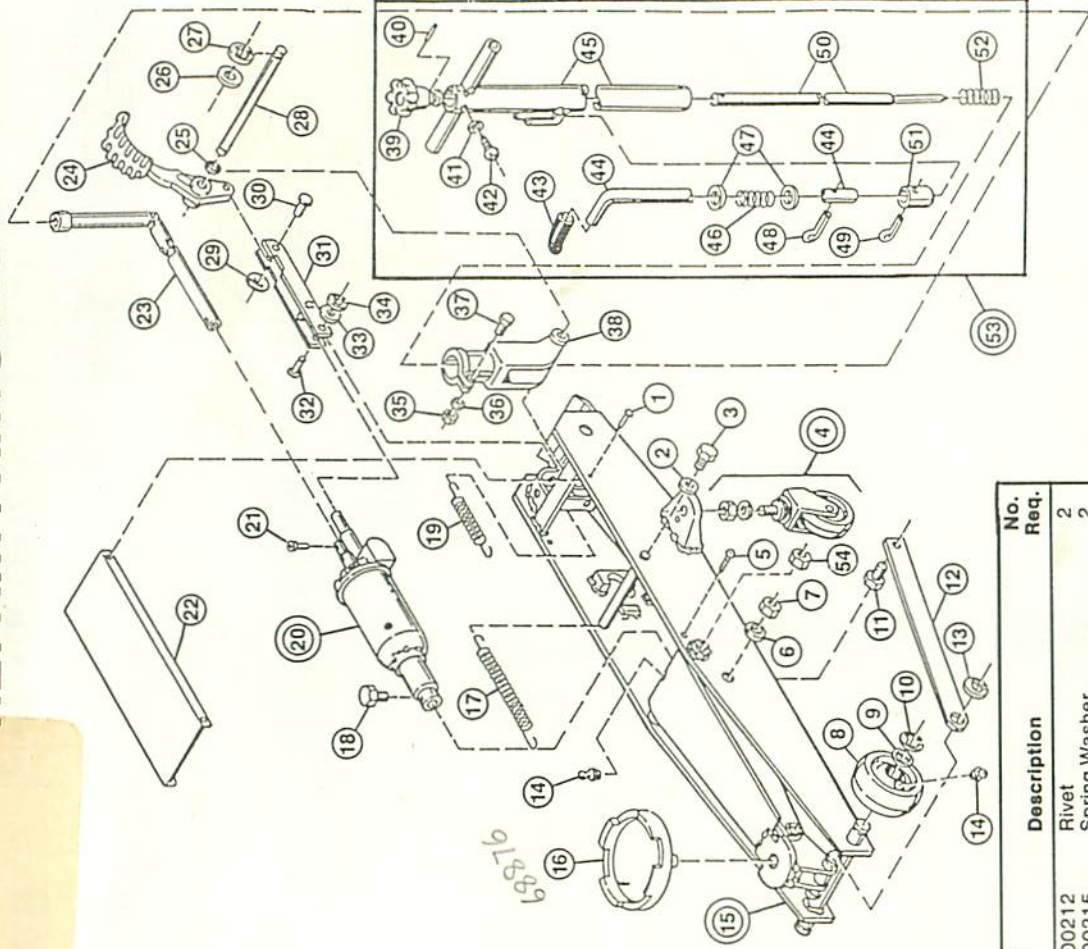
## 5 TON SERVICE JACK



**TRI-CITY HYDRAULIC JACK SERVICE**

4628 N. Florida Avenue  
Tampa, Florida 33603-3700  
(813) 236-8551

# REPAIR PARTS LIST



Code No.	Part No.	Description	No. Req.
1	99500212	Rivet	2
2	99500215	Spring Washer	2
3	99500214	Bolt	2
4	99500232	Rear Wheel Assembly	2
5	99500213	Screw	2
6	99500224	Spring Washer	2
7	99500223	Nut	2
8	99500228	Front Wheel	2
9	99500229	Washer (Axle)	2
10	99500230	Retaining Ring	2
11	99500220	Link Rod Bolt	2
12	99500219	Link Rod	2
13	99500227	Retaining Ring	2
14	99500067	Grease Nipple	2
15	99500210	Frame and Lift Arm Assembly	1
16	99500217	Saddle	1
17	99500221	Return Spring	1
18	99500225	Bolt	1
19	99500266	Pedal Spring	1
20	99500235	Power Unit Assembly	1
21	99500270	Bolt	1
22	99500211	Cover	1
23	99500268	Universal Joint Assy.	1
24	99500246	Pedal	1
25	99500267	Dry Bearing	1
26	99500252	Washer	2
27	99500251	Retaining Ring	2
28	99500250	Shaft	1
29	99500255	Push Nut	1
30	99500254	Link Pin	1
31	99500253	Link	1
32	99500256	Pump Plunger Pin	1
33	99500257	Washer	1
34	99500258	Retaining Ring	1
35	99500248	Nut	1
36	99500249	Washer	1
37	99500247	Bolt	1
38	99500245	Handle Socket	1
39	99500271	Release Knob	1
40	99500273	Spring Pin	1
41	99500275	Spring Washer	1
42	99500274	Screw	1
43	99500261	Grip	1
44	99500259	Handle Positioning Lever	1
45	99500244	Handle	1
46	99500262	Lock Spring	1
47	99500263	Washer	2
48	99500264	Cotter Pin	1
49	99500265	Cotter Pin	1
50	99500272	Release Rod	1
51	99500260	Lock Pin	1
52	99500269	Handle Socket Spring	1
53	99500294	Handle Assembly	1
54	99500222	Nut	2

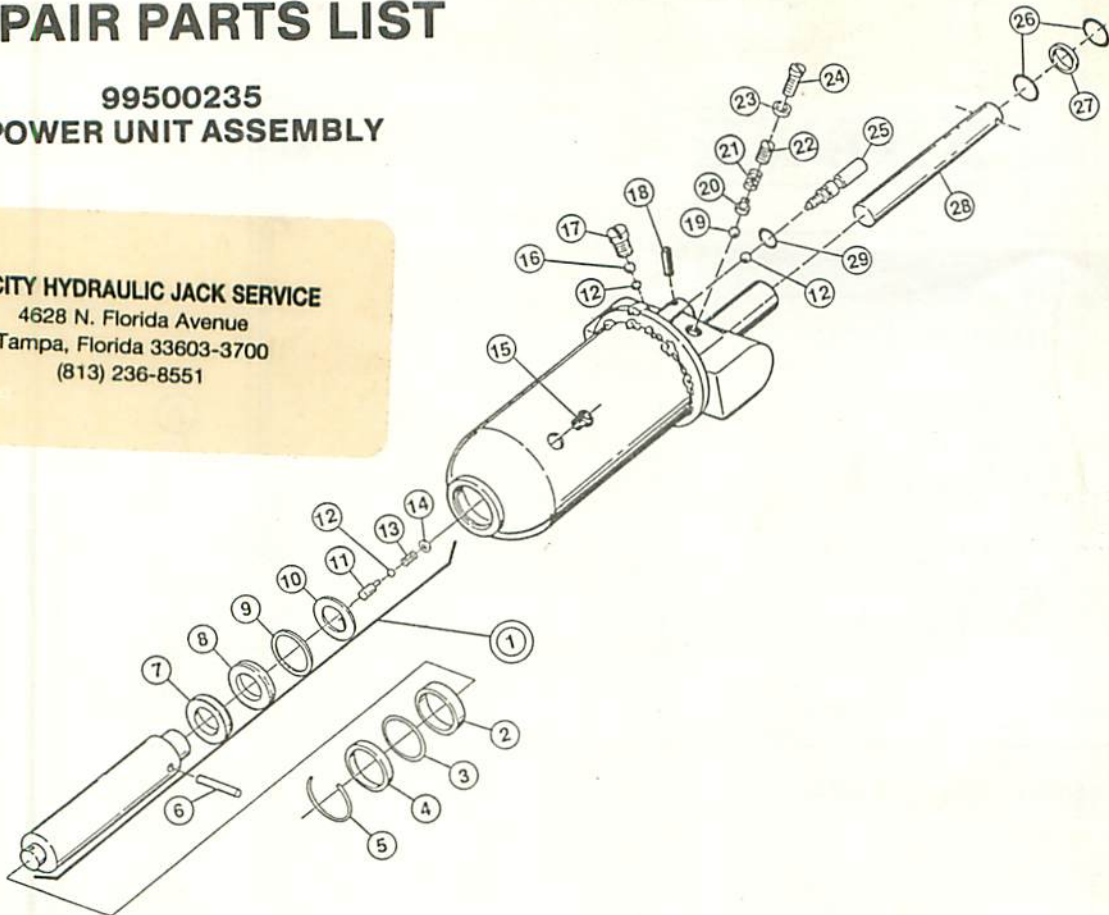
Code No.	Part No.	Description	No. Req.
31	99500253	Link	1
32	99500256	Pump Plunger Pin	1
33	99500257	Washer	1
34	99500258	Retaining Ring	1
35	99500248	Nut	1
36	99500249	Washer	1
37	99500247	Bolt	1
38	99500245	Handle Socket	1
39	99500271	Release Knob	1
40	99500273	Spring Pin	1
41	99500275	Spring Washer	1
42	99500274	Screw	1
43	99500261	Grip	1
44	99500259	Handle Positioning Lever	1
45	99500244	Handle	1
46	99500262	Lock Spring	1
47	99500263	Washer	2
48	99500264	Cotter Pin	1
49	99500265	Cotter Pin	1
50	99500272	Release Rod	1
51	99500260	Lock Pin	1
52	99500269	Handle Socket Spring	1
53	99500294	Handle Assembly	1
54	99500222	Nut	2

# REPAIR PARTS LIST

**99500235  
POWER UNIT ASSEMBLY**



**TRI-CITY HYDRAULIC JACK SERVICE**  
4628 N. Florida Avenue  
Tampa, Florida 33603-3700  
(813) 236-8551



Code No.	Part No.	Description	No. Req.
1	99500237	Ram Plunger Assembly	1
2	99500286	Spacer	1
* 3	99500287	"O" Ring	1
4	99500228	Ram Bushing	1
* 5	99500289	Snap Ring	1
6	99500281	Ram Pin	1
* 7	99500277	Ram Seal Washer	1
* 8	99500278	"O" Ring Retainer	1
* 9	99500279	"O" Ring	1
*10	99500280	Seal Retainer Washer	1
11	99500282	Limit Valve Pin	1
*12	S4156	Ball 1/4"	3
*13	99500284	Spring	1
*14	99500285	Spring Retainer	1
15	99500035	Filler Plug	1

Code No.	Part No.	Description	No. Req.
*16	W1216	Ball 3/8"	1
17	99500046	Plug	1
18	99500239	Spring Pin	1
*19	P18116	Safety Valve Ball 1/8"	1
*20	99500335	Safety Valve Ball Seat	1
*21	99500049	Safety Valve Spring	1
*22	99500047	Adjusting Screw	1
*23	99500241	Safety Valve Packing	1
24	99500240	Safety Valve Plug	1
25	99500238	Release Stem	1
*26	99500295	Plunger Ring	2
*27	99500296	Washer	1
28	99500236	Pump Plunger	1
*29	99500036	"O" Ring	1
†	67414X	Repair Kit	1

† Not Shown  
\* Included in #67414X Repair Kit **NLA**

For Economical Maintenance, Order Complete Repair Kit

# DECAL LOCATIONS

## BLACKHAWK®


Service Jack

MODEL

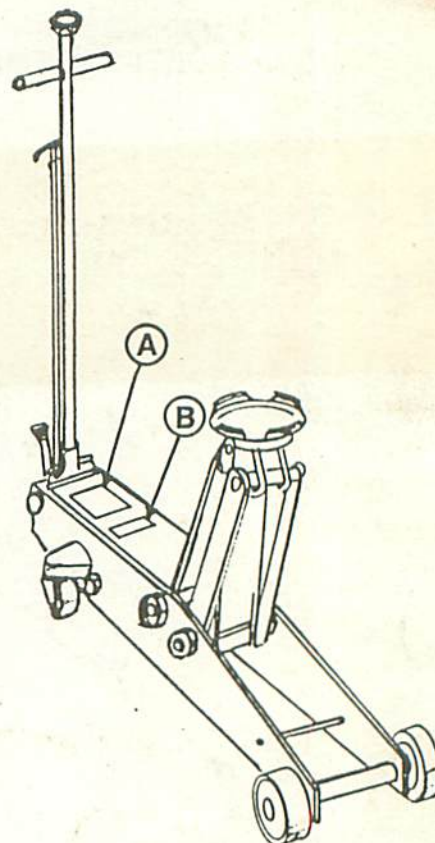
**67414**

Capacity

**5 Ton**

 APPLIED POWER INC. AUTOMOTIVE DIVISION  
MILWAUKEE, WI 53227 USAMADE IN JAPAN

(A) #619-86228 DECAL



### CAUTION

For your safety and to prevent injuries  
This jack is designed for lifting purposes only - NOT  
for supporting loads.  
IMMEDIATELY after jacking, support vehicle (load)  
with appropriately rated stands or equivalent blocking.  
DO NOT allow jack alone to support vehicle (load).  
DO NOT overload this jack beyond its rated capacity.

(B) #AJ 100503 DECAL

**Blackhawk Division**  
Applied Power, Inc.  
11333 W. National Avenue, P.O. Box 27207  
Milwaukee, Wisconsin 53227  
**(414) 321-7000**

