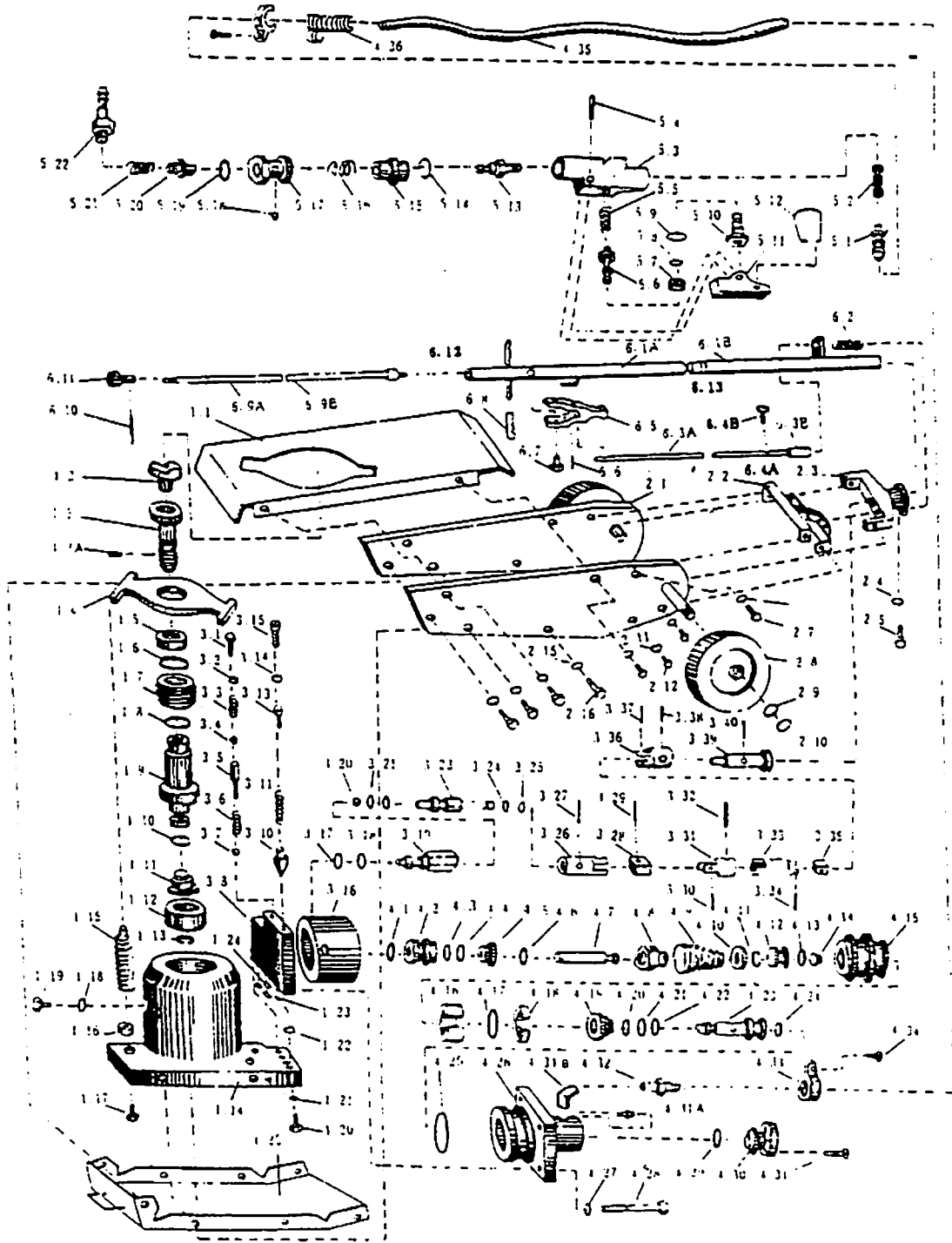


Astro Pneumatic Tool Company - Parts Breakdown Report

14-May-97

Model_No
AJ22FC

Product Description
20 TON AIR JACK



Astro Pneumatic Tool Co.

18051 E. Arenth Ave., City of Industry, CA 91748
(800) 221-9705 • (818) 965-4449 • Fax (818) 965-5797

PARTS LIST

Item No.	Description	Item No.	Description	Item No.	Description
1.1	cover	3.11	spring	4.22	* o-ring
1.2	saddle			4.23	throttle rod
1.3	extension screw	3.13	screw	4.24	* o-ring
1.3A	spring pin	3.14	* o-ring	4.25	* o-ring
1.4	spring support	3.15	screw	4.26	air pump body
1.5	screw bushing	3.16	pump body	4.27	washer
1.6	* Y-shape seal ring	3.17	washer	4.28	bolt
1.7	head nut	3.18	* o-ring	4.29	* o-ring
1.8	* o-ring	3.19	release valve body	4.30	back cover
1.9	piston rod	3.20	steel ball	4.31	screw
1.10	stop ring	3.21	* o-ring	4.31A	screw tube
1.11	* U-shape seal ring	3.23	release valve	4.31B	elbow joint
1.12	piston head	3.24	washer	4.32	union
1.13	elastic stop ring	3.25	stop ring	4.33	spiral clamp ring
1.14	cylinder base	3.26	fork axle with hole	4.34	screen
1.15	spring	3.27	steel wire	4.35	rubber hose
1.16	nut	3.28	connecting block	4.36	spring
1.17	screw	3.29	spring pin	5.1	union
1.18	* o-ring	3.30	spring pin	5.2	filter nozzle
1.19	screw	3.31	o-ring	5.3	case
1.20	screw	3.32	pin	5.4	pin
1.21	washer	3.33	joint	5.5	spring
1.22	* o-ring	3.34	steel wire	5.6	piston rod
1.23	* o-ring	3.35	connecting block	5.7	seal ring
1.24	* o-ring	3.36	fork axle with hole	5.8	o-ring
1.25	chassis base	3.37	spring pin	5.9	o-ring
2.1	side plate	3.38	spring pin	5.10	throttle
2.2	angle bracket	3.39	connecting axle	5.11	handle cover
2.3	handle fork	3.40	spring pin	5.12	locking spring
2.4	washer	4.1	washer	5.13	union
2.5	fastening screw	4.2	union	5.14	spring clamp ring
2.6	washer	4.3	* o-ring	5.15	bushing
2.7	bolt	4.4	* seal ring	5.16	spring
2.8	wheel	4.5	plug bushing	5.17	screw bushing
2.9	washer	4.6	* o-ring	5.18	steel ball
2.10	track ring	4.7	plug	5.19	seal ring
2.11	washer	4.8	cap	5.20	valve core
2.12	screw	4.9	spring	5.21	spring
2.13	screw	4.10	spring holder	5.22	union
2.15	washer	4.11	clamp ring	6.1	outside tube
2.16	bolt	4.12	steel bushing	6.2	spring
3.1	screw	4.13	* o-ring	6.3	adjustable rod
3.2	washer	4.14	seal plug	6.4	split pin
3.3	spring	4.15	piston	6.5	lock lever
3.4	steel ball	4.16	* fluoroplastics plate	6.6	spring pin
3.5	valve core	4.17	* o-ring	6.7	hexagon-headed screw
3.6	spring	4.18	* seal ring	6.8	handle
3.7	steel ball	4.19	seal throttle	6.9	control rod
3.8	cylinder base	4.20	washer	6.10	spring pin
3.10	valve	4.21	* o-ring	6.11	knob