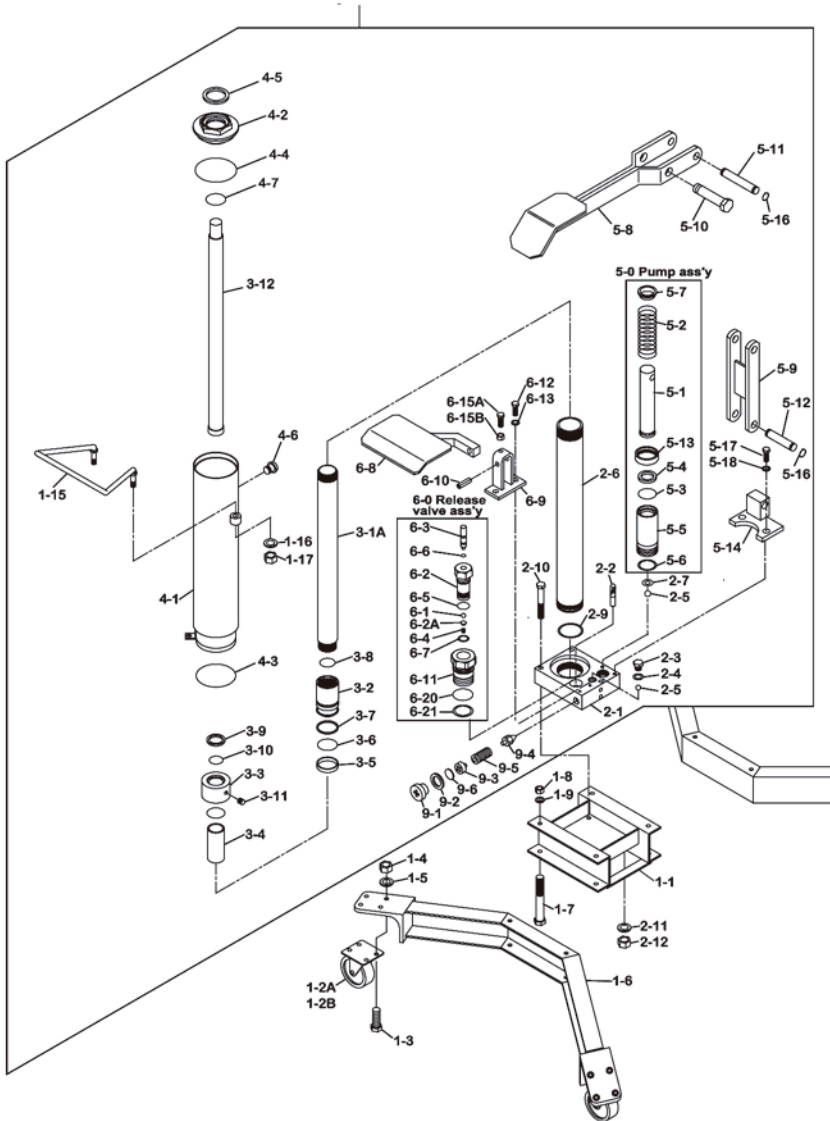


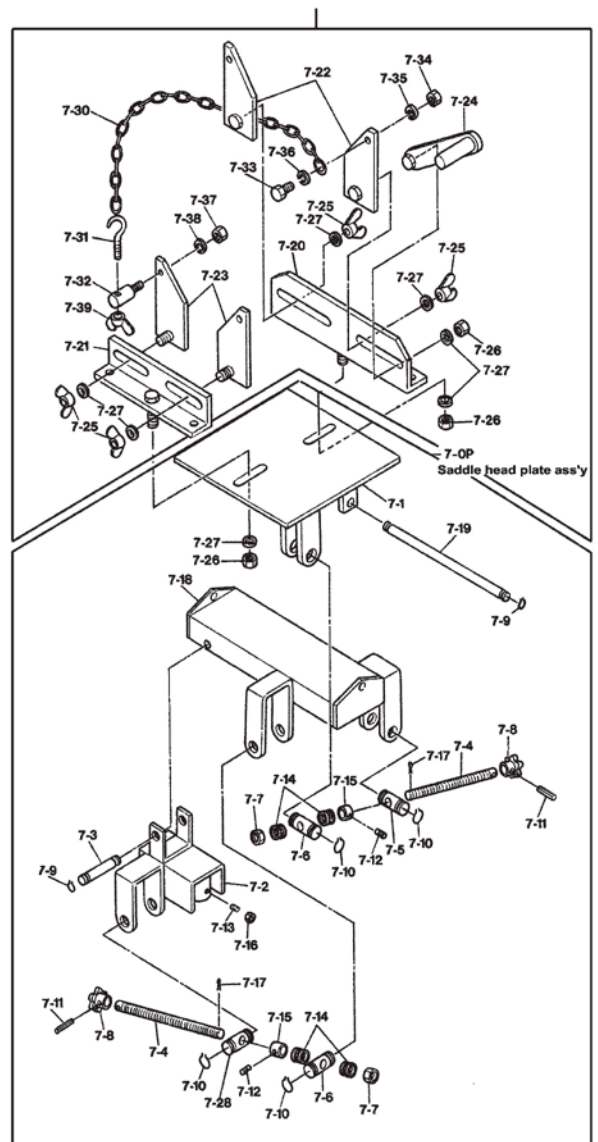
PARTS BREAKDOWN

Call 1.800.221.9705 for questions concerning performance of the product or other inquiries.

50-0- Hydraulic Power Unit Assembly



7-0A-Saddle Head Attachment Assembly





Astro Pneumatic Tool Company

372 Old US Highway 52 South
Mount Airy, NC 27030

Model:

500HMJY

Product Type:

1/2 TON CAPACITY TELESCOPING TRANSMISSION JACK

Call 1.800.221.9705 for questions concerning performance of the product or other inquiries.

Parts List

Index No.	Part No.	Description	Qty
1-1	500HMJ-1-1	Chassis	1
1-2A	500HMJ-1-2A	Swivel Caster	2
1-2B	500HMJ-1-2B	Swivel Caster (with brake)	2
1-3	500HMJ-1-3	Bolt	16
1-4	500HMJ-1-4	Nut	16
1-5	500HMJ-1-5	Spring Washer	16
1-6	500HMJ-1-6	Leg	2
1-7	500HMJ-1-7	Bolt	4
1-8	500HMJ-1-8	Nut	4
1-9	500HMJ-1-9	Spring Washer	4
1-15	500HMJ-1-15	Handle	1
1-16	500HMJ-1-16	Spring Washer	2
1-17	500HMJ-1-17	Nut	2
2-1	500HMJ-2-1	Oil Box	1
2-2	500HMJ-2-2	Oil Strainer	1
2-3	500HMJ-2-3	Blind Bolt	1
2-4	500HMJ-2-4	Copper Packing	1
2-5	500HMJ-2-5	Steel Ball	2
2-6	500HMJ-2-6	Cylinder	1
2-7	500HMJ-2-7	Lock Washer	1
2-9	500HMJ-2-9	Copper Packing	1
2-10	500HMJ-2-10	Bolt	3
2-11	500HMJ-2-11	Spring washer	3
2-12	500HMJ-2-12	Nut	3
3-1A	500HMJ-3-1A	Piston Rod (Large)	1
3-2	500HMJ-3-2	Packing Step	1
3-3	500HMJ-3-3	Grand Nut	1
3-4	500HMJ-3-4	Sleeve	1
3-5	500HMJ-3-5*	Extra Wearing	1
3-6	500HMJ-3-6*	O-Ring	1
3-7	500HMJ-3-7*	Back-Up Ring	1
3-8	500HMJ-3-8*	O-Ring	2
3-9	500HMJ-3-9*	Oil Seal	1
3-10	500HMJ-3-10*	O-Ring	1
3-11	500HMJ-3-11	Plug	1
3-12	500HMJ-3-12	Piston Rod (small)	1
4-1	500HMJ-4-1	Oil Tank	1
4-2	500HMJ-4-2	Tank Nut	1
4-3	500HMJ-4-3*	O-Ring	1
4-4	500HMJ-4-4*	O-Ring	1
4-5	500HMJ-4-5*	Oil Seal	1
4-6	500HMJ-4-6	Oil Fill Cap	1
4-7	500HMJ-4-7*	O-Ring	1
5-0	500HMJ-5-0	Pump Assembly	1
5-1	500HMJ-5-1	Plunger	1
5-2	500HMJ-5-2	Spring	1
5-3	500HMJ-5-3*	O-Ring	1
5-4	500HMJ-5-4*	Oil Seal	1
5-5	500HMJ-5-5	Pump Cylinder	1
5-6	500HMJ-5-6*	Copper packing	1
5-7	500HMJ-5-7	Spring Retainer	1
5-8	500HMJ-5-8	Foot Pedal for Lifting	1
5-9	500HMJ-5-9	Link	1
5-10	500HMJ-5-10	Plunger Pin	1
5-11	500HMJ-5-11	Pin A	1
5-12	500HMJ-5-12	Pin B	1
5-13	500HMJ-5-13	Spring Retainer B	1
5-14	500HMJ-5-14	Link Bracket	1
5-16	500HMJ-5-16	Snap Ring	4
5-17	500HMJ-5-17	Bolt	2
5-18	500HMJ-5-18	Spring Washer	2
6-0	500HMJ-6-0	Release Valve Assembly	1
6-1	500HMJ-6-1	Steel Ball	1
6-2	500HMJ-6-2	Release Valve Body A	1

Index No.	Part No.	Description	Qty
6-2A	500HMJ-6-2A	Spring Retainer	1
6-3	500HMJ-6-3	Throttle	1
6-4	500HMJ-6-4	Spring	1
6-5	500HMJ-6-5*	O-Ring	1
6-6	500HMJ-6-6*	O-Ring	1
6-7	500HMJ-6-7*	Copper Packing	1
6-8	500HMJ-6-8	Foot Pedal for Lowering (release valve)	1
6-9	500HMJ-6-9	Pedal Bracket	1
6-10	500HMJ-6-10	Spring Pin	1
6-11	500HMJ-6-11	Release Valve Body B	1
6-12	500HMJ-6-12	Bolt	2
6-13	500HMJ-6-13	Spring Washer	2
6-15A	500HMJ-6-15A	Screw	1
6-15B	500HMJ-6-15B	Nut	1
6-20	500HMJ-6-20*	O-Ring	1
6-21	500HMJ-6-21*	Copper Packing	1
7-0P	500HMJ-7-0P	Saddle Head Plate Assembly	1
7-1	500HMJ-7-1	Saddle Head Plate	1
7-2	500HMJ-7-2	Saddle Head Base	1
7-3	500HMJ-7-3	Connecting Pin A	1
7-4	500HMJ-7-4	Screw	2
7-5	500HMJ-7-5	Female Screw A	1
7-6	500HMJ-7-6	Pin A	2
7-7	500HMJ-7-7	Hex Head Fluted Nut	2
7-8	500HMJ-7-8	Grip	2
7-9	500HMJ-7-9	Snap Ring	4
7-10	500HMJ-7-10	Snap Ring	8
7-11	500HMJ-7-11	Snap Pin	2
7-12	500HMJ-7-12	Screw	2
7-13	500HMJ-7-13	Screw	1
7-14	500HMJ-7-14	Thrust Bearing	4
7-15	500HMJ-7-15	Handle Collar	2
7-16	500HMJ-7-16	Hex Head Nut	1
7-17	500HMJ-7-17	Cotter Pin	2
7-18	500HMJ-7-18	Tilting Base	1
7-19	500HMJ-7-19	Connecting Pin B	1
7-28	500HMJ-7-28	Female Screw A	1
7-0A	500HMJ-7-0A	Saddle Head Attachment Assembly	1
7-20	500HMJ-7-20	Saddle Head Bracket A	1
7-21	500HMJ-7-21	Saddle Head Bracket B	1
7-22	500HMJ-7-22	Saddle Head Attachment A	2
7-23	500HMJ-7-23	Saddle Head Attachment B	2
7-24	500HMJ-7-24	Saddle Head Attachment C	1
7-25	500HMJ-7-25	Wing Nut	4
7-26	500HMJ-7-26	Hex Head Nut	3
7-27	500HMJ-7-27	Washer	7
7-30	500HMJ-7-30	Ring Chain	1
7-31	500HMJ-7-31	Hook With Screw	1
7-32	500HMJ-7-32	Hook Pin	1
7-33	500HMJ-7-33	Hex Head Bolt	1
7-34	500HMJ-7-34	Hex Head Nut	1
7-35	500HMJ-7-34	Spring Washer	1
7-36	500HMJ-7-36	Washer	1
7-37	500HMJ-7-37	Hex Head Nut	1
7-38	500HMJ-7-38	Spring Washer	1
7-39	500HMJ-7-39	Wing Nut	1
9-1	500HMJ-9-1	Cap Bolt	1
9-2	500HMJ-9-2*	Packing	1
9-3	500HMJ-9-3	Spring Retainer	1
9-4	500HMJ-9-4	Safety Valve	1
9-5	500HMJ-9-5	Spring	1
9-6	500HMJ-9-6	Packing	1
50-0	500HMJ-50-0	Hydraulic Power Unit Assembly	1
9-7	500HMJ-RK	Repair Kit	1

Items marked with an (*) are available in the Repair Kit