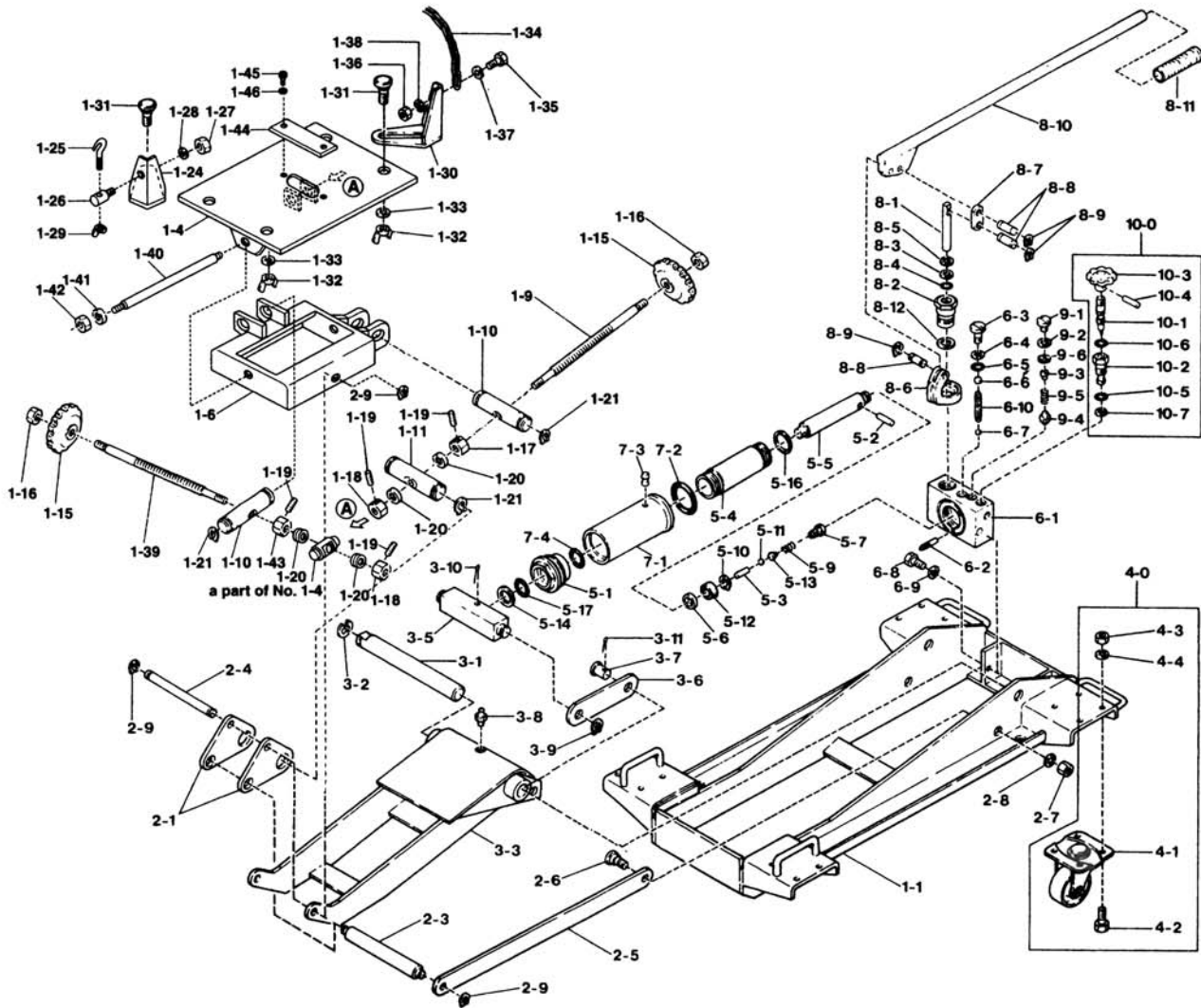


# 1-1/2 Ton Capacity Truck Transmission Jack 1500CY



PART #	DESCRIPTION	QTY
1-1	Frame	1
1-4	Plate	1
1-6	Tilting saddle	1
1-9	Screw	1
1-10	Pin with female screw	1
1-11	Pin	1
1-15	Grip	2
1-16	Nut	2
1-17	Collar	2
1-18	Collar	2
1-19	Set screw	7
1-20	Thrust bearing	4
1-21	Snap ring	4
1-24	Bracket(LH)	2
1-25	Hook with thread	2
1-26	Pin for hook	2
1-27	Nut	2
1-28	Spring washer	2

PART #	DESCRIPTION	QTY
1-29	Wing nut	2
1-30	Bracket(RH)	2
1-31	Bolt	4
1-32	Wing nut	4
1-33	Washer	4
1-34	Chain	2
1-35	Bolt	2
1-36	Nut	2
1-37	Washer	2
1-38	Spring washer	2
1-39	Screw	1
1-40	Shaft for tilting	1
1-41	Washer	2
1-42	U type nut	2
1-43	Nut	3
1-44	Cover	1
1-45	Screw	2
1-46	Spring washer	2

PART #	DESCRIPTION	QTY
2-1	Arm connecting joint	2
2-3	Link rod pin	1
2-4	Arm pin	1
2-5	Link rod	2
2-6	Link rod pin	2
2-7	Nut	2
2-8	Spring washer	2
2-9	Snap ring	4
3-1	Arm pin	1
3-2	E-type ring	1
3-3	Arm	1
3-5	Connecting joint	1
3-6	Tension rod	2
3-7	Tension rod pin	2
3-8	Grease nipple	1
3-9	Snap ring	2
3-10	Cotter pin	1
3-11	Cotter pin	2