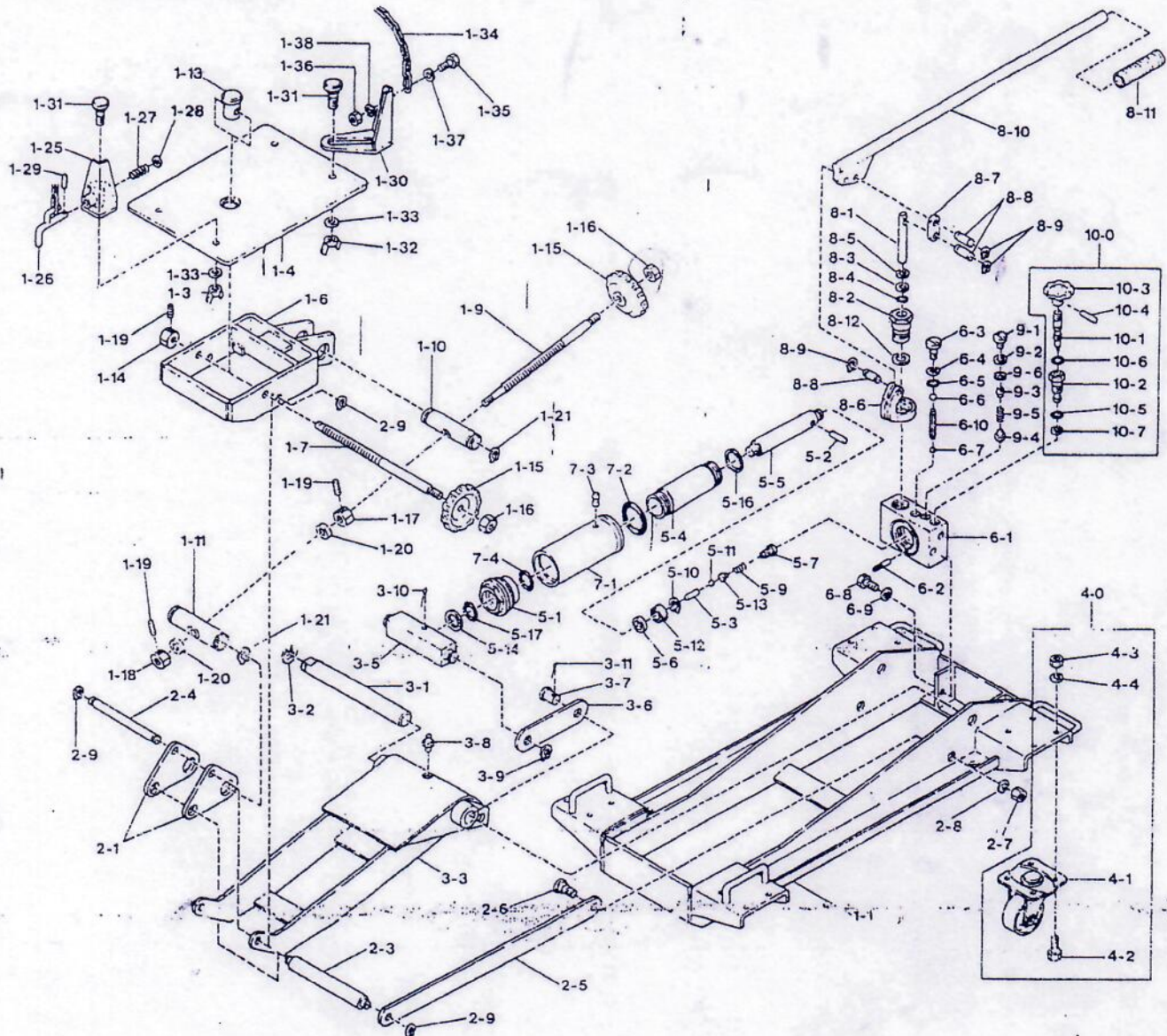


PARTS BREAKDOWN

1500C



PART #	DESCRIPTION	QTY
1-1	Frame	1
1-4	Plate	1
1-6	Tilting saddle	1
1-7	Screw	1
1-9	Screw	1
1-10	Pin with female screw	1
1-11	Pin	1
1-13	Guide Screw	1
1-14	Collar	1
1-15	Grip	2
1-16	Nut	2
1-17	Collar	1
1-18	Collar	1
1-19	Set Screw	3
1-20	Thrust bearing	2
1-21	Snap ring	4
1-25	Bracket (LH)	2
1-26	Hook lever	2

PART #	DESCRIPTION	QTY
1-27	Spring	2
1-28	Collar	2
1-29	Spring pin	2
1-30	Bracket (RH)	2
1-31	Bolt	4
1-32	Wing nut	4
1-33	Washer	4
1-34	Chain	2
1-35	Bolt	2
1-36	Nut	2
1-37	Washer	2
1-38	Spring washer	2
2-1	Arm connecting joint	2
2-3	Link rod pin	1
2-4	Arm pin	1
2-5	Link rod	2
2-6	Link rod pin	2
2-7	Nut	2

PART #	DESCRIPTION	QTY
2-8	Spring washer	2
2-9	Snap ring	4
3-1	Arm pin	1
3-2	E-type ring	1
3-3	Arm	1
3-5	Connecting joint	1
3-6	Tension rod	2
3-7	Tension rod pin	2
3-8	Grease nipple	1
3-9	Snap ring	2
3-10	Cotter pin	1
3-11	Cotter pin	2
4-0	Wheel Ass'y	4
4-1	Castor	4
4-2	Bolt	4
4-3	Nut	16
4-4	Spring washer	16
5-1	Tank nut	1