

GJ 125 M	GJ 150 M	GJ 300	GJ 500	GJ 1000
1273 kg	1527 kg	3055 kg	5091 kg	10182 kg

ARMSTRONG

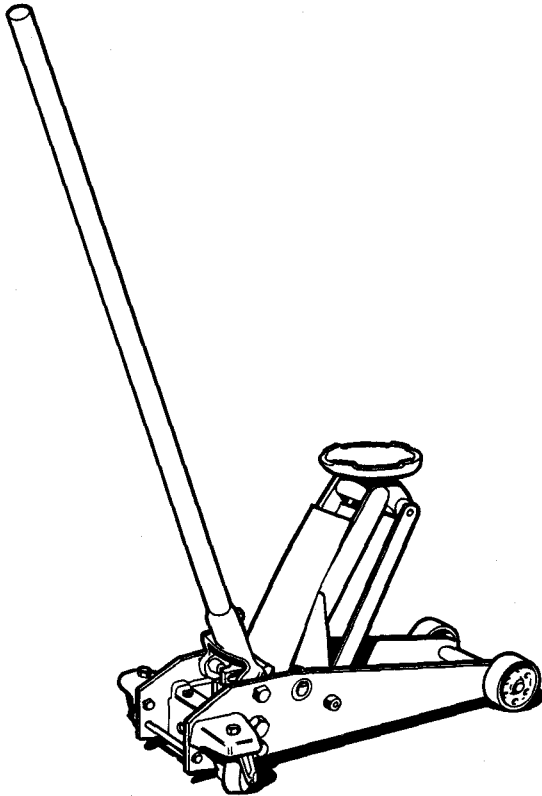
HYDRAULIC SERVICE JACKS

INSTRUCTION MANUAL

ARMSTRONG YORK PTY. LTD.

93 McINTYRE ROAD, SUNSHINE 3020. Phone 311 0461

GJ 150 M

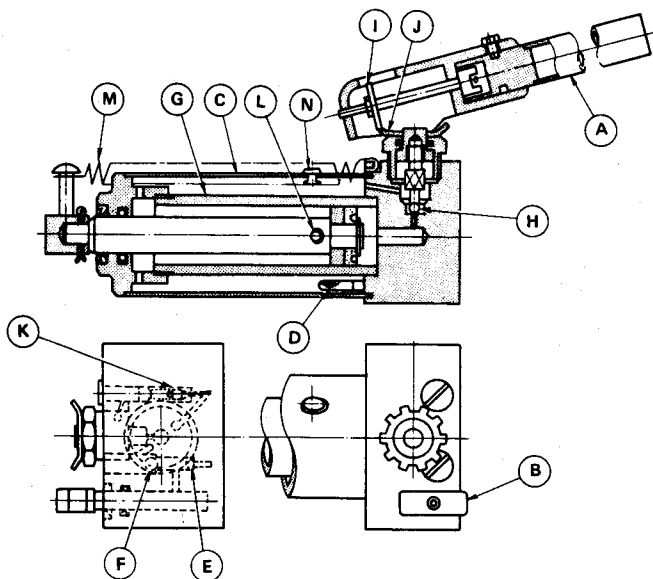


SPECIFICATIONS

Model	Capacity Kg.	Min. Saddle Height Cm.	Max. Saddle Height Cm.	Overall Length Cm.	Overall Height Cm.	Overall Width At Front Wheels Cm.	Max. Frame Height Cm.	Net Weight Incl. Handle Kg.
GJ150M	1527	11.938	49.02	66.04	125.73	24.64	14.98	40.86

OPERATING INSTRUCTIONS

Figure 1



TO RAISE THE SADDLE

Turn the handle (A, Figure 1) clockwise and operate up and down. Hydraulic oil in tank (C) is pressurized by the plunger (B) and is drawn through oil strainer (D), suction valve (E) and delivered through valve (F) to cylinder (G), and so raises the saddle.

When the saddle reaches its maximum height, the safety device (L) allows the by-pass of pressurized oil, so that the saddle is not forced higher.

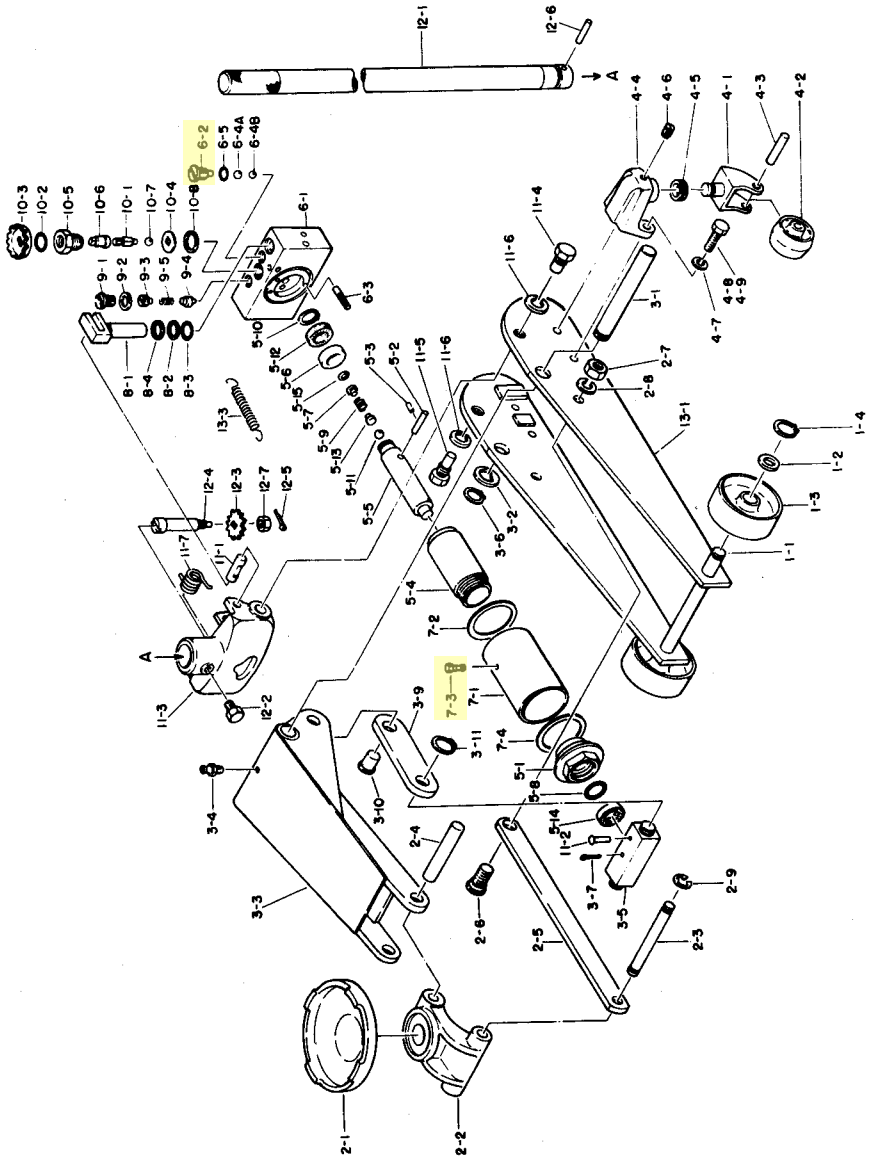
When the load against the saddle exceeds the capacity indicated in the specification, the safety valve (K) operates and excessive stress against the Jack is eliminated.

Note: Do not attempt to disassemble the safety valve, as it is set at factory.

TO LOWER THE SADDLE

Slowly turn the handle (A) anti-clockwise. The handle is connected to the release valve (H) through two inter-connecting gear wheels (I and J) so that when the handle is turned anti-clockwise, the release valve is opened, allowing the oil to return to the reservoir.

PARTS LIST GJ 150 M



WHEN ORDERING SPARE PARTS ALWAYS QUOTE MODEL NO. AND PART NO.