

MODEL P-40 OPERATING MANUAL & PARTS

⚠ WARNING



Do not exceed the rated capacity of this press. Never tamper with hydraulic system pressure settings. Components of this press are specially designed to withstand rated capacity loads. Do not substitute bolts or pins, or any other components. Use only genuine factory replacement parts. Always center load on ram plunger. Offset load can damage ram and may cause load to eject. Visual inspection should be made before each use of the press, checking for signs of cracked welds, bent bed pins, loose or missing bolts, or any other structural damage. Remove all loads from press bed before attempting to adjust bed height. When using any accessories such as arbor plates, be certain they are centered on press bed and are in full contact with bed. Parts being pressed may splinter, shatter, or be ejected from the press. Due to varied applications, it is your responsibility to always use adequate guards, wear eye protection and heavy protective clothing when operating this press. Keep hands and fingers out of the press and away from parts that may shift and pinch. Do not stand in front of work area where load is applied. Before applying load, be certain all press bed supporting pins are fully engaged. Failure to heed these warnings may result in personal injury or property damage. Observe all safety precautions when operating this unit. ALWAYS use a bearing shield when pressing bearings. Utilize caution setting work up to be pressed to insure that the item that is to be pressed or any part thereof CANNOT BE DISLODGED or broken during press work. Do not go near leaks. High pressure oil can easily puncture skin and will cause serious injury, gangrene or death. If injured, seek emergency medical help. Immediate surgery is required to remove oil. Do not use finger or skin to check for leaks. Release the hydraulic pressure before loosening any fittings.

Heavy Duty Frame
The frame is constructed of high tensile strength 8 inch rolled steel.



Hydraulic Pump & Ram Unit

This unit is designed for fast descent down to work. The slow side for uniform steady pressure on work.

SPECIFICATIONS

Height: 75"
Floor Space: 35" Deep, 34" Wide
Throat Height (Maximum): 40"
Bed Depth (Outside): 12"
Bed Depth (Inside): 7 1/2"
Hydraulic Pump Height: 14-1/2"
Hydraulic Ram Height: 14-1/2"
Hydraulic Unit Stroke: 6-1/2"
Number of Positions: 4-1/2
material: 7" rolled steel

Adjustable Bed Assembly
Ease of operation has been incorporated into the design. The adjustable bed assembly allows one person to easily change bed positions. Double pinning assures maximum strength in any position.

**MADE IN
U.S.A.**

40 Ton Heavy Duty Press

ARCAN

ARCAM 40 Ton Press

40Ton Heavy Duty Press

INSPECTION

Visual inspection of the 40 Ton Shop Press is recommended before each use. Any hydraulic press which appears to be damaged in any way, is found to be badly worn, or operates abnormally must be removed from service. If the hydraulic press is accidentally subjected to an abnormal load or shock, it must be inspected by the manufacturer.

OPERATING INSTRUCTIONS

The press bed is adjustable. Ease of operation has been incorporated into the design. Fully retract ram and remove all items from the press bed frame. Support the press bed and remove the 4 pins. Raise or lower bed to desired height and reinstall press pins. Be certain pins are fully engaged in the parallel flanges of the upright columns. Pressing Bearings: It is essential that you use the bearing shell when pressing bearings on or off, this prevents bearing from popping out. Position press on a flat, level, hard surface. Preferably concrete. Check that all nuts and bolts are tight. OPEN THE VALVE ON TOP OF THE PUMP. This valve is shipped closed in order to prevent oil leaks. When it is open it will allow air to enter the tank as the oil is being pumped into the ram. Clear the area of bystanders, especially small children, before using. Set the press bed to the required height. The press is most effective when the work piece is located 1 inch below the rams retracted position. The compression stroke can include the entire 5 inch working range. Do not extend the ram beyond 5 inches. The press is designed to exert up to a 40 ton force on anything that is positioned beneath its ram. With this loading capacity, it is very important that the work piece be supported securely on the press bed. Stop loading immediately if the work piece moves. The work piece can pop out from under the ram at a high rate of speed and injure someone. A bearing shield or a screen must be used. Close the shutoff valve by rotating clockwise until hand tight. Using only the jack handle supplied, jack the ram down with the large pump until the ram presses the work piece. The large pump will give you no more than 10 tons of force. Check to ensure that the work piece has not moved or twisted in any way as this could cause the work piece to pop out and injure someone. Move the jack handle to the small pump. Watch the pressure gauge and continue to pump. Do not exceed the rated pressure of the hydraulic system. When the job is done, release the shutoff valve and the ram will retract to its full retract position.

MAINTENANCE

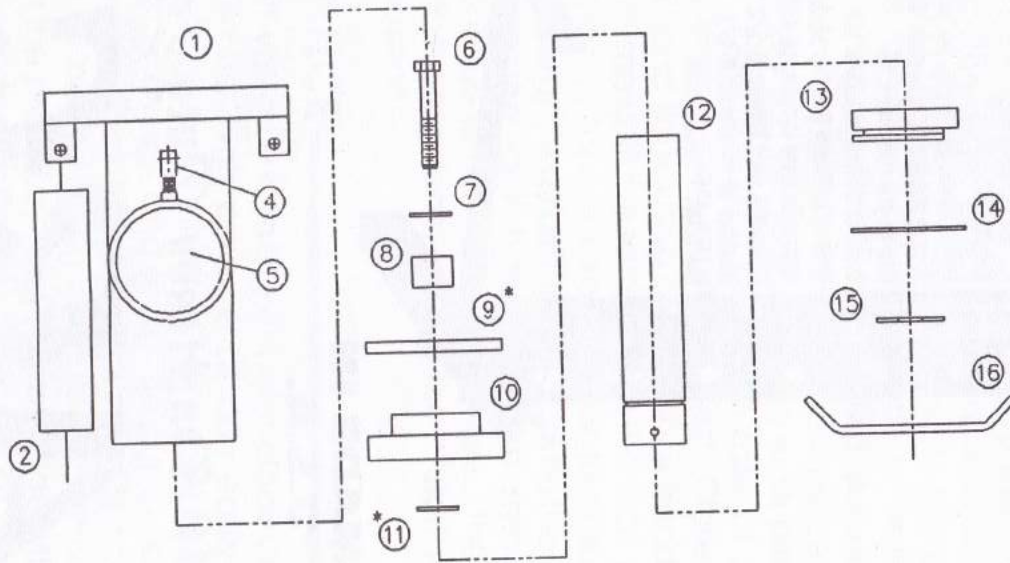
Release shutoff valve by rotating counter-clockwise before loosening any fittings or bolts. Remember high pressure oil can easily puncture skin and will cause serious injury, gangrene or death. Check the break down manual for location of steel balls, springs, o-rings, and seals. The pump has a fill port in the side to top up with G32 wt. hydraulic oil. If the ram has been disconnected from the pump it must be purged of air before going back into operation. To do this the ram must be removed from the press. Lay the ram on its side with the hydraulic hose to the top and the gauge to the bottom. Pump the ram 5 inches out and allow it to return while still on its side.

Arcan
phone 1 800 8797316

ATTENTION!!

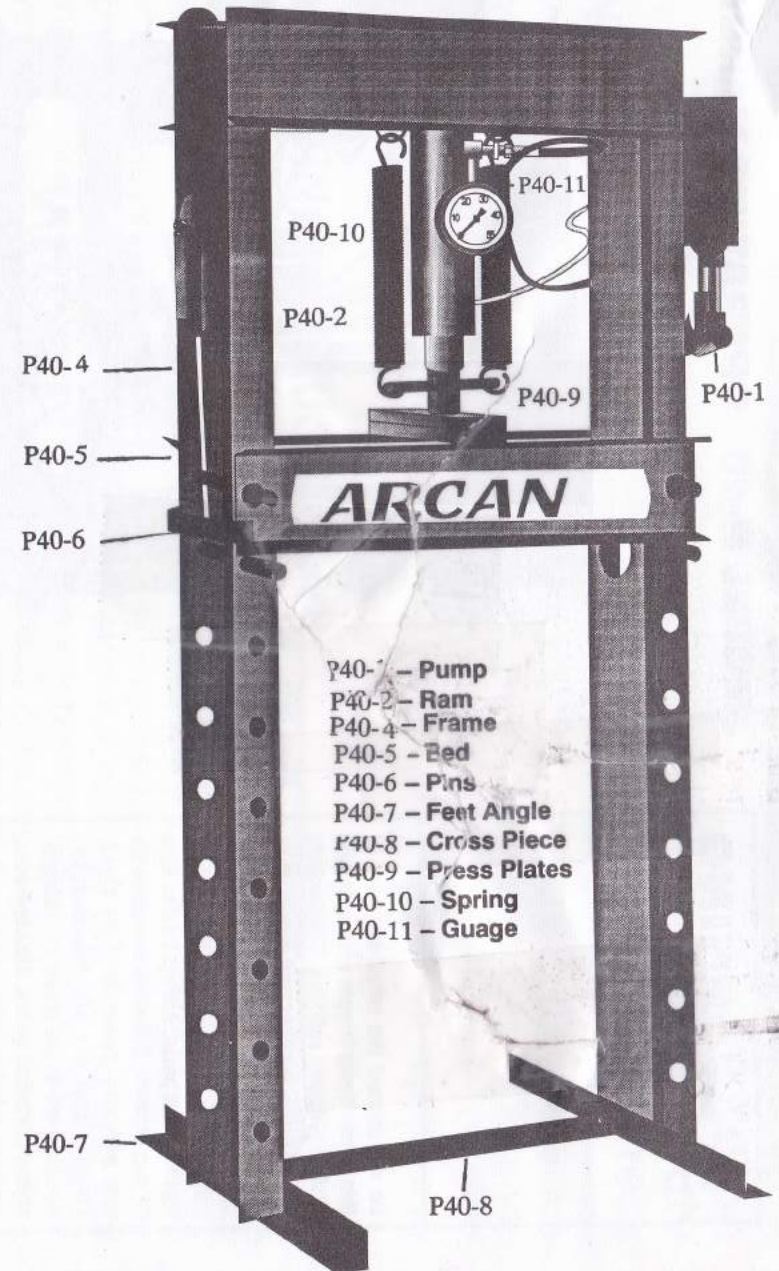
40 Ton Press

If you are missing any parts or find any damage, call **ARCAN** direct. We will remedy the situation. **DO NOT CALL THE STORE.** Thank you, for your cooperation. CALL 1-864-834-0800 (Monday thru Friday 9am to 5pm Eastern time)



* THESE ITEMS
INC. IN REBUILD
KIT.

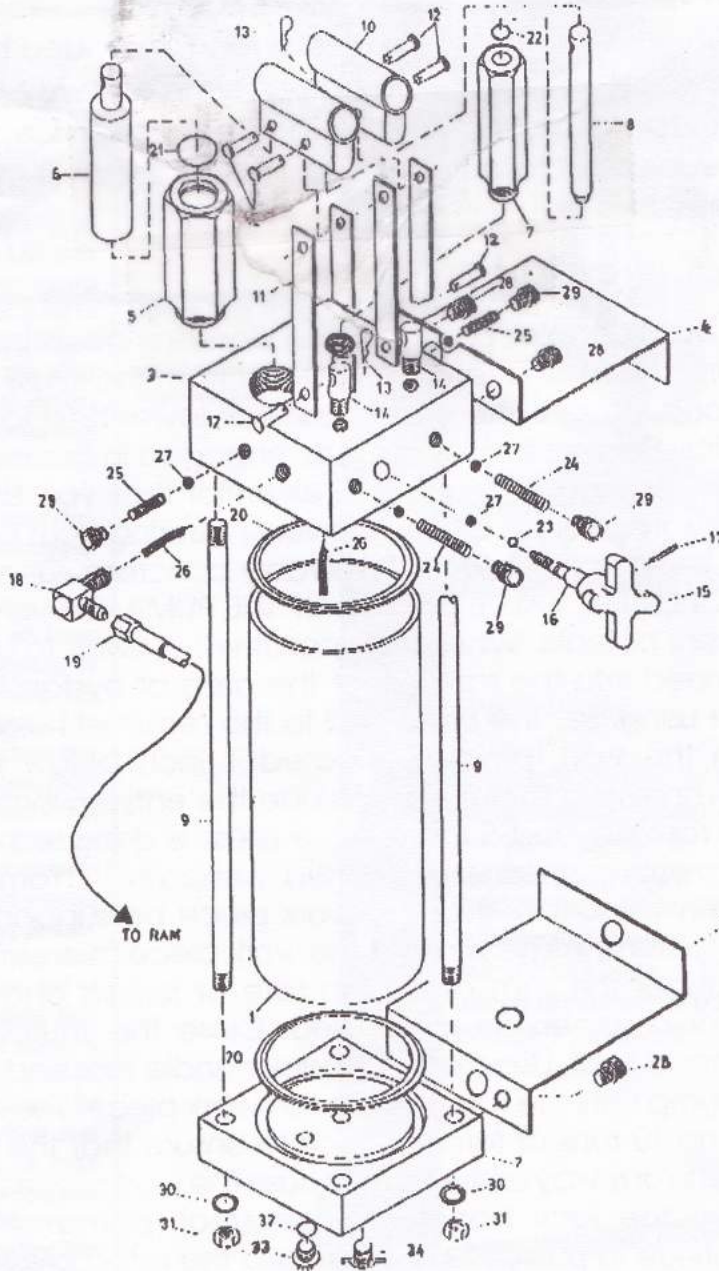
ITEM	QTY	DESCRIPTION	ITEM	QTY	DESCRIPTION
1	1	RAM HOUSING WELDMENT	9	1	POLY PAC SEAL
2	2	RETURN SPRING	10	1	PISTON
3	1	90° FITTING (NOT SHOWN)	11	1	1/2" O-RING
4	1	90° GAUGE FITTING	12	1	PISTON ROD
5	1	50 TON GAUGE	13	1	PISTON GAUGE
6	1	HEX BOLT	14	1	LARGE SNAP RING
7	1	1/2" FLAT WASHER	15	1	SMALL SNAP RING
8	1	STAND-OFF	16	1	RETRACT PLATE



- P40-1 - Pump
- P40-2 - Ram
- P40-4 - Frame
- P40-5 - Bed
- P40-6 - Pins
- P40-7 - Feet Angle
- P40-8 - Cross Piece
- P40-9 - Press Plates
- P40-10 - Spring
- P40-11 - Gauge

ASSEMBLY

Your 40 Ton Shop Press comes Preassembled and tested for both your convenience and safety. The Hydraulic unit has been designed for use in this 40 Ton Press and **should not be used for any other purpose.**



ITEM	QTY.	DESCRIPTION	ITEM	QTY.	DESCRIPTION
1	1	TANK	18	1	90° MALE ELBOW 1/4 x 1/4
2	1	PUMP LID	19	1	HYDRAULIC HOSE 1/4 x 41" OA 1
3	1	PUMP BODY	20	2	SEAL WS120 3.5
4	2	PUMP BRACKET	21	1	O-RING #214
5	1	PISTON BODY 1"	22	1	O-RING #112 N90
6	1	PISTON 1"	23	1	O-RING #108
7	1	PISTON BODY 1/2"	24	1	SPRING P5012 B
8	1	PISTON 1/8"	25	1	SPRING P5012 A
9	4	TIE ROD	26	2	FILTER
10	2	CRADLE	27	5	5/16 BALL
11	4	POINT ARM	28	11	SH CAP SCREW 1/8"-13 x 5/8"
12	4	5/16 x 1-1/8 CLEVIS PIN	29	4	SH CAP 1/2-13 x 5/8
13	4	HITCH PIN #13	30	4	7/16 LOCK WASHER
14	2	PIVOT PIN	31	4	7/16-14 NUT
15	1	KNOB	32	1	O-RING #2337N70
16	1	VALVE	33	1	PLUG
17	1	SPRING PIN 1/8 x 3/4	34	1	VALVE

40 Ton Press ARCAM