



INSTRUCTION MANUAL REPAIR PARTS LIST

2 TON SERVICE JACK

PART CODE H68042

WARNING

1. THIS IS A LIFTING DEVICE ONLY. LOAD MUST BE SUPPORTED BY OTHER APPROPRIATE MEANS BEFORE GETTING UNDER VEHICLE FOR ANY REASON.
2. DO NOT OVERLOAD. OVERLOADING CAN CAUSE DAMAGE TO OR FAILURE OF THE JACK.
3. THIS JACK IS DESIGNED FOR USE ONLY ON HARD LEVEL SURFACES CAPABLE OF SUSTAINING THE LOAD. USE ON OTHER THAN HARD LEVEL SURFACES CAN RESULT IN JACK INSTABILITY AND POSSIBLE LOSS OF LOAD.
4. FAILURE TO HEED THESE WARNINGS MAY RESULT IN LOSS OF LOAD, DAMAGE TO JACK AND/OR FAILURE RESULTING IN PERSONAL INJURY OR PROPERTY DAMAGE.

any way, is found to be badly worn, or operates abnormally SHALL BE REMOVED FROM SERVICE until necessary repairs are made by an authorized Hein-Werner service center.

INSTRUCTIONS BEFORE USE

1. Squirt a small amount of hydraulic jack oil or light motor oil on the pump piston so it will run down inside the piston guide.
2. With release valve open, pump handle six full strokes to assure proper internal lubrication.
3. Thoroughly lubricate all moving parts of your jack. Raise the saddle to full height and oil the surface of the ram, as well as all moving parts in the handle and the lifting mechanism.
4. Grease the main pin at the fitting provided on the pivot end of the lifting arm.

OWNER'S RESPONSIBILITY

Operation. The owner and/or operator shall have an understanding of these operating instructions and warnings before operating the jack. Warning information shall be emphasized and understood. If the user is not fluent in English, the instructions and warnings shall be read to and discussed with the operator in the operator's native language by the purchaser/owner, making sure that the operator comprehends its contents.

Inspection

1. Visual inspection shall be made before each use of the jack, checking for leaking hydraulic fluid, and damaged, loose or missing parts.
2. Each jack, if subjected to an abnormal load or shock, shall be inspected immediately by an authorized Hein-Werner service center.
3. Owners and/or users should be aware that repair of this equipment may require specialized knowledge and facilities. It is recommended that an annual inspection of the jack be made by an authorized Hein-Werner service center and that any defective parts, decals or warning labels be replaced with genuine Hein-Werner parts. A list of authorized service centers is available from Hein-Werner.

Damaged Jacks. Any jack which appears to be damaged in

OPERATION

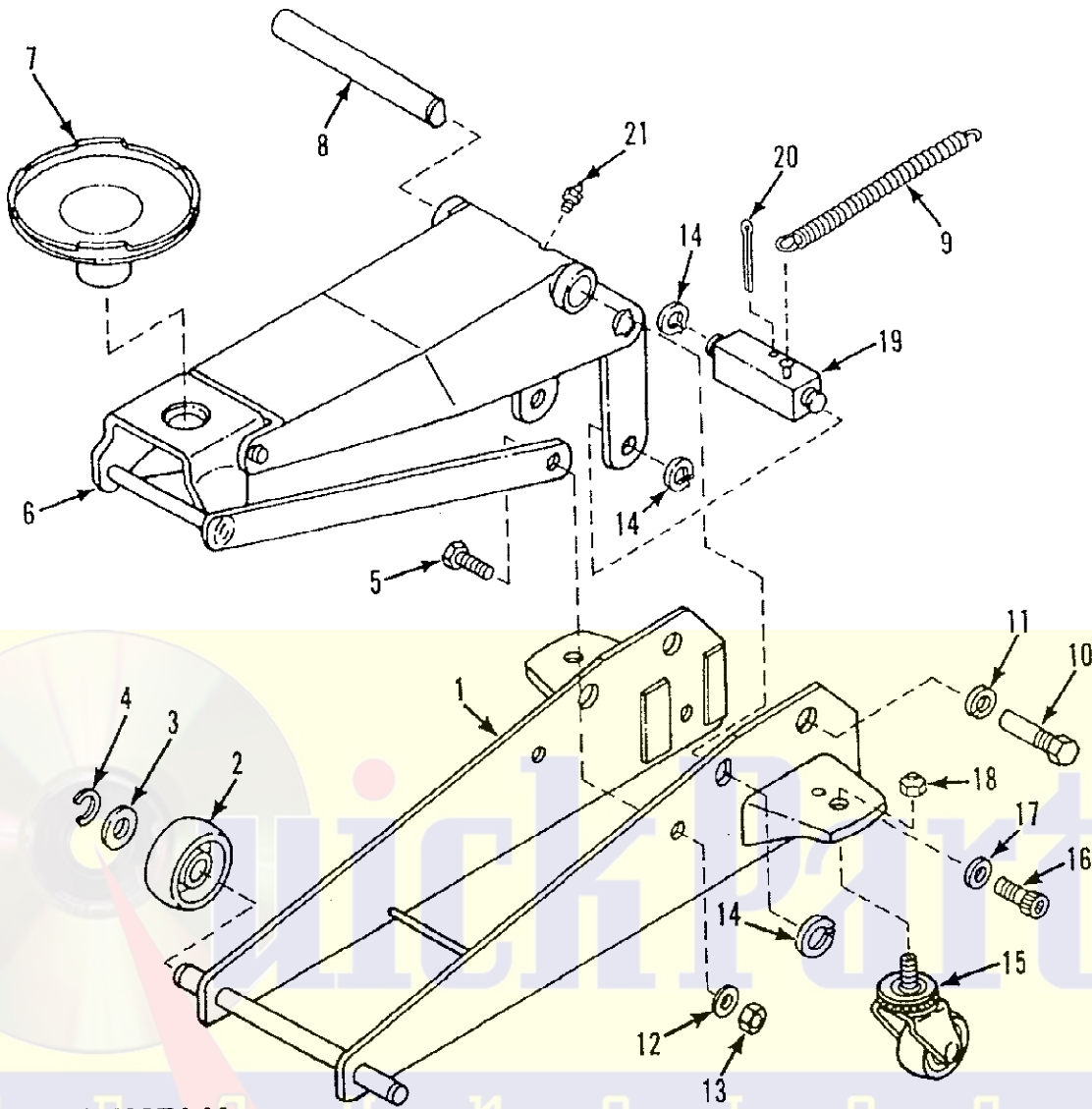
1. Lifting - Turn handle clockwise to close release valve. Center lift saddle under load and pump handle.

WARNING

**USE JACK FOR LIFTING ONLY.
ALWAYS SUPPORT VEHICLE WITH
VEHICLE SUPPORT STANDS.**

Always center the load on the saddle of your jack. Off-center loads and loads lifted while jack is not level may damage the jack or cause personal injury.

2. Lowering - Slowly turn handle counterclockwise. Avoid "shock loads" created by quickly opening and closing the release as the load is being lowered. This may result in overloading of the hydraulic circuit and possible damage to the jack.
3. When jack is not in use, the handle should be in an upright position. Never leave it resting on the pump piston or at the bottom of a stroke. Saddle should be completely lowered and release closed.

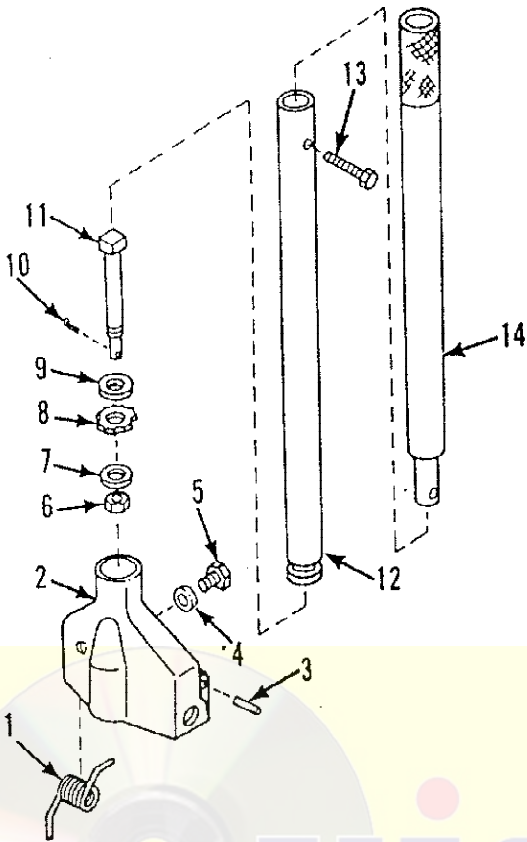


FRAME ASSEMBLY

ITEM NO.	PART CODE	DESCRIPTION	QTY.
1	69233	Frame Assembly	1
2	69234	Wheel	2
3	69235	Washer	2
4	69236	Retainer Ring	2
5	69237	Bolt	2
6	69238	Lift Arm Assembly	1
7	69239	Saddle	1
8	69240	Main Pivot Pin	1
9	69241	Return Spring	1
10	69242	Handle Socket Pivot Pin	2
11	69243	Lockwasher	2
12	69244	Lockwasher	2
13	69245	Nut	2
14	69246	Retainer Ring	3
15	69247	Caster Assembly	2
16	69248	Unit Mounting Bolts	2
17	69249	Lockwasher	2
18	69250	Jam Nut	2
19	69253	Cross Pin	1
20	69254	Cotter Pin	1
21	69268	Grease Fitting	1
	69269	Model Decal	
	69270	Warning Decal	

Hein-Werner Service and Service Parts
are available only through your local
authorized Hein-Werner Service Center.

HANDLE ASSEMBLY



ITEM NO.	PART CODE	DESCRIPTION	QTY.
1	69251	Spring	1
2	69252	Handle Fork	1
3	69264	Piston Pin	1
4	69263	Washer	1
5	69262	Bolt	1
6	69261	Nut	1
7	69260	Lockwasher	1
8	69259	Release Gear	1
9	69258	Washer	1
10	69257	Cotter Pin	1
11	69256	Gear Shaft	1
12	69266	Handle (Lower Half)	1
13	69267	Hex Head Bolt	1
14	69265	Handle (Upper Half)	1

UNIT ASSEMBLY (H69255)

ITEM NO.	PART CODE	DESCRIPTION	QTY.
1	69201	Ram Bearing	1
2	69202	"O" Ring Retainer	1
3	69203	"O" Ring	1
4	69204	Seal Retainer Washer	1
5	69205	Pin	1
6	69206	Ball	2
7	69207	Spring	1
8	69208	Spring Retainer	1
9	69209	Ram Plunger Assembly	1
10	69210	Ram Pin	1
11	69211	Retainer Ring	1
12	69212	Ram Guide	1
13	69213	"O" Ring	1
14	69214	Spacer	1
15	69215	Oil Filler Plug	1
16	69216	Ball	1
17	69217	Spring Cap	1
18	69218	Compression Spring	1
19	69219	"O" Ring	1
20	69220	Adjusting Screw	1
21	69221	Release Valve Assembly	1
22	69222	Release Stem	1
23	69223	Washer	1
24	69224	"O" Ring	1
25	69225	Ball	1
26	69226	Valve Plug	1
27	69227	Ball	1
28	69228	Pump Piston	1
29	69229	Wiper	1
30	69230	Back-up Ring	1
31	69231	"O" Ring	1
	69232	Repair Kit	1

