

# INSTRUCTION MANUAL REPAIR PARTS LIST

**WS-225 PREMIUM  
SERVICE JACK**

**2-1/4 TON (2041 Kg)  
CAPACITY**

**PART CODE  
H28682**

## **WARNING**

1. READ, STUDY AND UNDERSTAND ALL WARNING LABELS AND OPERATING INSTRUCTIONS FURNISHED WITH THIS EQUIPMENT PRIOR TO USE. IF YOU DO NOT UNDERSTAND THIS WARNING, CONTACT YOUR REPRESENTATIVE FOR CLARIFICATION.
2. NEVER ALLOW UNSKILLED OR IMPROPERLY TRAINED PERSONNEL TO OPERATE THIS EQUIPMENT.
3. THIS IS A LIFTING DEVICE ONLY. THE LOAD MUST BE SUPPORTED IMMEDIATELY BY OTHER APPROPRIATE MEANS. WHILE LIFTING, POSITION APPROPRIATE CAPACITY VEHICLE STANDS OR BLOCKING AND EXTEND THEM IN STAGES TO MAINTAIN A MINIMUM DISTANCE BETWEEN LOAD AND STANDS DURING LIFTING. DO NOT MOVE OR DOLLY THE VEHICLE WHILE ON THE JACK.
4. LIFT ONLY ON AREAS OF THE VEHICLE SPECIFIED BY THE MANUFACTURER. IT IS YOUR RESPONSIBILITY TO CHECK WITH THE MANUFACTURER TO BE CERTAIN THE POINT OF LOADING IS CAPABLE OF SUSTAINING THE LIFTING FORCES.
5. DO NOT OVERLOAD. OVERLOADING CAN CAUSE DAMAGE TO OR FAILURE OF THE JACK.
6. THIS JACK IS DESIGNED FOR USE ONLY ON HARD LEVEL SURFACES CAPABLE OF SUSTAINING THE LOAD. USE ON OTHER THAN HARD LEVEL SURFACES CAN RESULT IN JACK INSTABILITY AND POSSIBLE LOSS OF LOAD.
7. CENTER LOAD ON SADDLE PRIOR TO LIFTING VEHICLE. OFF CENTER LOADS MAY CAUSE DAMAGE TO THE JACK AND/OR LOSS OF LOAD.
8. DO NOT OPEN OIL FILLER PLUG FOR ANY REASON UNLESS THE JACK IS UNLOADED AND FULLY LOWERED.
9. IT IS YOUR RESPONSIBILITY TO KEEP ALL WARNING LABELS AND INSTRUCTIONAL LITERATURE LEGIBLE AND INTACT. REPLACEMENT LABELS AND LITERATURE ARE AVAILABLE FROM THE FACTORY.
10. FAILURE TO HEED THESE WARNINGS WILL RESULT IN EQUIPMENT AND/OR PROPERTY DAMAGE AND/OR PERSONAL OR FATAL INJURY.

### OWNER'S RESPONSIBILITY

**Operation.** The owner and/or operator shall have an understanding of these operating instructions and warnings before operating the jack. Warning information shall be emphasized and understood. If the user is not fluent in English, the instructions and warnings shall be read to and discussed with the operator in the operator's native language by the purchaser/owner, making sure that the operator comprehends its contents.

**Maintenance.** The jack shall be maintained in accordance with instructions listed under "Maintenance."

#### Inspection

1. Visual inspection shall be made before each use of the jack, checking for leaking hydraulic fluid, and damaged, loose or missing parts.

2. Each jack, if subjected to an abnormal load shock, shall be inspected immediately by an authorized Hein-Werner service center.
3. Owners and/or users should be aware that repair of this equipment may require specialized knowledge and facilities. It is recommended that an annual inspection of the jack be made by an authorized service center and that any defective parts, decals or warning labels be replaced with genuine Hein-Werner parts. A list of authorized service centers is available upon request.

**Damaged Jacks.** Any jack which appears to be damaged in any way, is found to be badly worn, or operates abnormally SHALL BE REMOVED FROM SERVICE until necessary repairs are made by an authorized service center.

### INSTRUCTIONS BEFORE USE

1. Open release valve by turning handle counterclockwise. Pump handle six full strokes to assure proper internal lubrication, and to bleed any air from the hydraulic system.
2. Squirt a small amount of hydraulic jack oil or lightweight motor oil on the pump pistons. Pump handle several times to distribute oil.
3. Thoroughly lubricate all moving parts of the jack. Raise the saddle to full height by closing release valve and pumping handle. Oil the surface of the ram as well as all moving parts in the handle and lifting mechanism. Grease all grease fittings.

### OPERATION

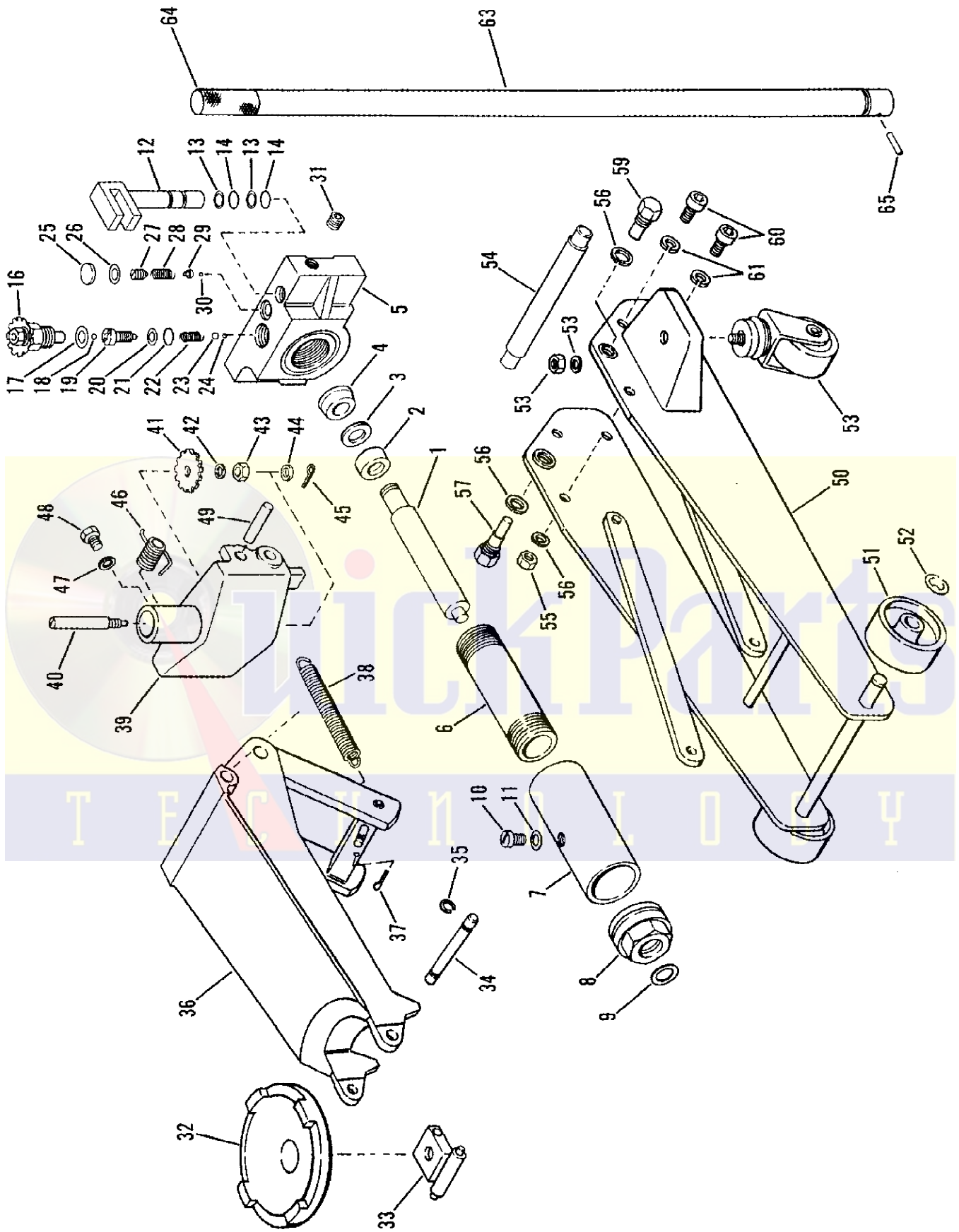
1. **Lifting** - Secure vehicle by blocking wheels. Close release valve by turning handle clockwise. Dolly jack until lift saddle is centered under load and pump handle.

## **WARNING**

**USE JACK FOR LIFTING ONLY.  
ALWAYS SUPPORT VEHICLE WITH  
VEHICLE SUPPORT STANDS.**

Always center the load on the saddle of your jack. Off-center loads and loads lifted while jack is not level may damage the jack or cause personal injury.

2. **Lowering** - Slowly turn release handle counterclockwise. Avoid "shock loads" created by quickly opening and closing the release as the load is being lowered. This may result in overloading of the hydraulic circuit and possible damage to the jack.



2-1/4 TON PREMIUM SERVICE JACK

PART CODE H28682

## MAINTENANCE

1. Regularly check oil level. Use only genuine Hein-Werner hydraulic jack oil in the unit of your jack. Never use alcohol or hydraulic brake fluid.

To check oil level, jack must be at rest, saddle down. Remove filter plug and inspect oil level. Level should be just over cylinder.

2. Keep the jack clean and well lubricated. Raise the saddle to full height and oil the surface of the ram often, as well as all moving parts in the handle, the pump pistons and the lifting mechanism. Frequently add grease to all fittings.

## 2-1/4 TON PREMIUM SERVICE JACK PART CODE H28682

Item No.	Parts Code	Description	Qty. Required	Item No.	Parts Code	Description	Qty. Required
1	H3127700	Ram Plunger	1	37	BE846061	Cotter Pin	1
2	H3182000	Bearing	1	38	H3115500	Spring	1
*3	H3119100	Back-up Ring	1	39	H3125200	Handle Fork Asm	1
*4	H6557900	U-Cup	1			Includes Items 40-45, 47, 48	
5	H3124900	Unit Base	1	40	H3126400	Handle Stud	1
6	H3126100	Cylinder	1	41	H3114800	Release Gear	1
7	H3115300	Reservoir	1	42	H2532000	Lockwasher	1
8	H3125100	Top Nut	1	43	EJ100014	Hex Jam Nut	1
*9	H1635000	O-Ring	1	44	SJ100415	Washer	1
10	H6014100	Fill Plug	1	45	H2529000	Cotter Pin	1
*11	H0473000	Washer	1	46	H3115400	Spring	1
12	H3180600	Pump Piston	1	47	H2638500	Lockwasher	1
*13	H3181400	Back-up Ring	2	48	H6479800	Screw	1
*14	H1626200	O-Ring	2	49	H3180300	Piston Pin	1
16	H3182800	Release Asm	1	50	H3124800	Frame Asm	1
*17	H3115600	Copper Gasket	1	51	H3127100	Wheel	2
*18	H0267500	Ball .25 Dia	1	52	H1308400	Retaining Ring	2
19	H3184400	Orifice Plug	1	53	H3113500	Caster Asm	2
*20	H3183500	Back-up Ring	1	54	H3180100	Main Pin	1
*21	H6778300	O-Ring	1	55	H2611000	Nut	2
*22	H0388500	Spring	1	56	H6244900	Lockwasher	4
*23	H0256900	Ball .31 Dia	1	57	H3181700	R. Pivot Bolt	1
*24	H1722000	Ball .19 Dia	1	59	H3180500	L. Pivot Bolt	1
*25	H3180900	Expansion Plug	1	60	H5549800	S.H.C. Screw	4
*26	H3181800	Seal	1	61	H2532000	Lockwasher	4
27	H3181500	Adj Screw	1	---	H3181900	Handle Asm	---
*28	BK878110	Spring	1			Includes Items 63, 64, 65	
29	BK880013	Ball Guide	1	63	H3126300	Handle	1
*30	H2835300	Ball .12 Dia	1	64	H3182400	Grip Tape	1
31	H3815400	Plug	1	65	H6284000	Roll Pin	1
32	H3125400	Saddle	1	**	H3116700	Product Decal	1
33	H3125700	Saddle Holder	1	**	H3111900	Warning Decal	1
34	H3182700	Pin	1	**	H6693900	Decal, Logo	1
35	H1681000	Pin Clip	4				
36	H3125000	Lift Arm Asm	1				
		Includes Items 33, 34, 35					

\* Items Included in Repair Kit H3185600

\*\* Items Not Shown

--- Power Unit Asm H3124700 Includes Items 1-31