

# INSTRUCTION MANUAL REPAIR PARTS LIST

HYDRAULIC SERVICE JACK

2 Ton (1815 Kg) Capacity

PART CODE H68040



## WARNING



1. This is a lifting device only. Do not move or dolly the vehicle while on the jack. The load must be supported immediately by other appropriate means.
2. Do not overload. Overloading can cause damage to or failure of the jack.
3. Lift only on areas of the vehicle as specified by the vehicle manufacturer.
4. This jack is designed for use only on hard level surfaces capable of sustaining the load. Use on other than hard level surfaces can result in jack instability and possible loss of load.
5. Center load on saddle prior to lifting vehicle. Off-center loads and loads lifted while jack is not level may damage the jack or cause loss of load, personal injury, or property damage.
6. It is the owners responsibility to keep warning decals legible and intact. Replacement decals may be obtained from authorized service centers or the factory.
7. Study, understand, and follow all instructions provided with this jack prior to operation.
8. Failure to heed these warnings may result in loss of load, damage to jack, and/or failure resulting in personal injury or property damage.

## OWNER'S RESPONSIBILITY

**Operation.** The owner and/or operator shall have an understanding of these operating instructions and warnings before operating the jack. Warning information shall be emphasized and understood. If the user is not fluent in English, the instructions and warnings shall be read to and discussed with the operator in the operator's native language by the purchaser/owner, making sure that the operator comprehends its contents.

**Maintenance.** The jack shall be maintained in accordance with instructions listed under "Maintenance."

### Inspection

1. Visual inspection shall be made before each use of the jack, checking for leaking hydraulic fluid, and damaged, loose or missing parts.
2. Each jack, if subjected to an abnormal load shock, shall be inspected immediately by an authorized Hein-Werner service center.
3. Owners and/or users should be aware that repair of this equipment may require specialized knowledge and facilities. It is recommended that an annual inspection of the jack be made by an authorized service center and that any defective parts, decals or warning labels be replaced with genuine Hein-Werner parts. A list of authorized service centers is available upon request

**Damaged Jacks.** Any jack which appears to be damaged in any way, is found to be badly worn, or operates abnormally SHALL BE REMOVED FROM SERVICE until necessary repairs are made by an authorized service center.

## INSTRUCTIONS BEFORE USE

1. Open release valve by turning handle counterclockwise. Pump handle six full strokes to assure proper internal lubrication, and to bleed any air from the hydraulic system.
2. Squirt a small amount of hydraulic jack oil or light-weight motor oil on the pump pistons. Pump handle several times to distribute oil.
3. Thoroughly lubricate all moving parts of the jack. Raise the saddle to full height by closing release valve and pumping handle. Oil the surface of the ram as well as all moving parts in the handle and lifting mechanism. Grease all grease fittings.

## OPERATION

1. **Lifting** - Secure vehicle by blocking wheels. Close release valve by turning handle clockwise. Dolly jack until lift saddle is centered under load and pump handle.



## WARNING



**USE JACK FOR LIFTING ONLY.  
ALWAYS SUPPORT VEHICLE WITH  
VEHICLE SUPPORT STANDS.**

Always center the load on the saddle of your jack. Off-center loads and loads lifted while jack is not level may damage the jack or cause personal injury.

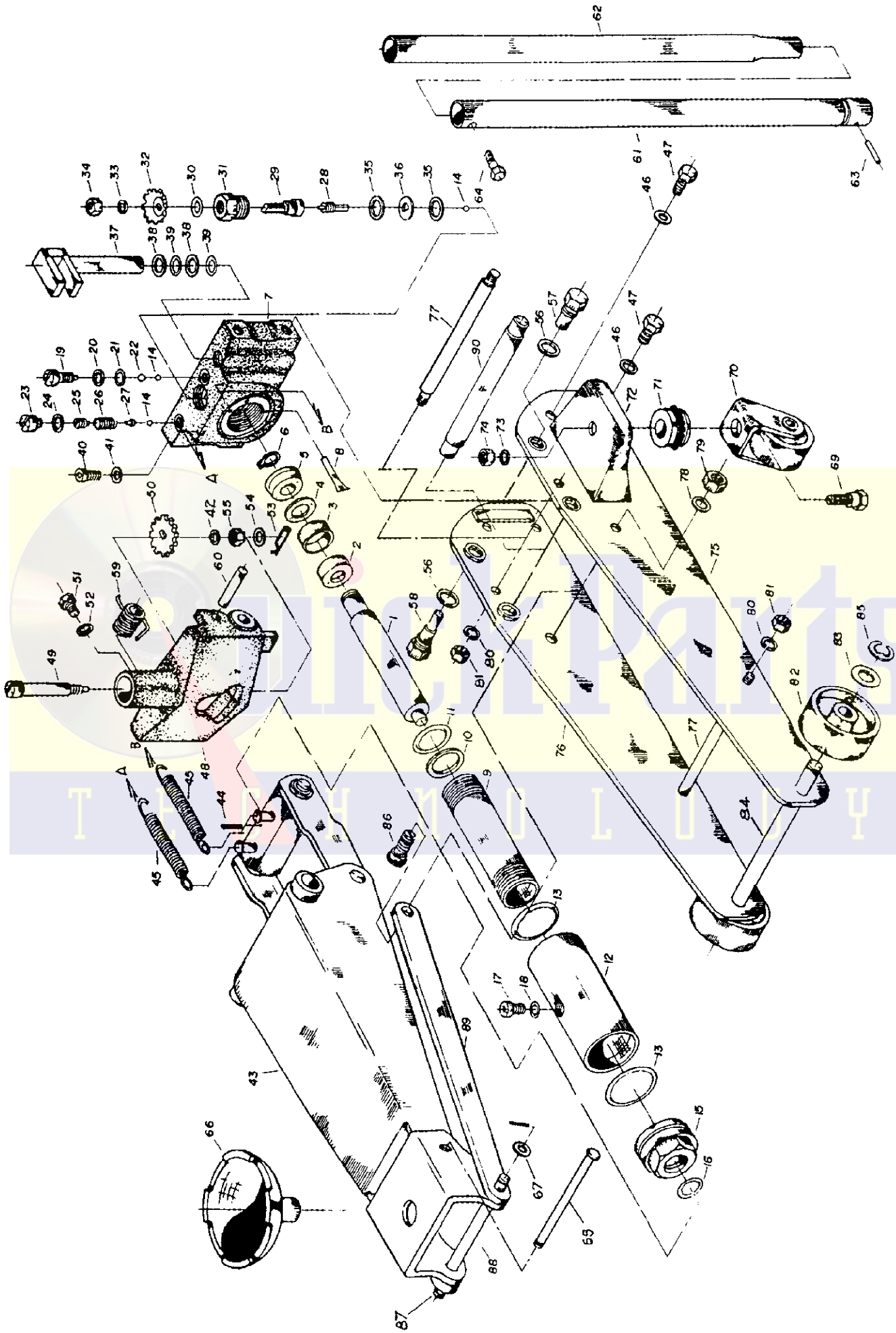
2. **Lowering** — Slowly turn release handle counterclockwise. **Avoid "shock loads" created by quickly opening and closing the release as the load is being lowered. This may result in overloading of the hydraulic circuit and possible damage to the jack.**

## MAINTENANCE

1. Regularly check oil level. Use only genuine Hein-Werner hydraulic jack oil in the unit of your jack. Never use alcohol or hydraulic brake fluid.

To check oil level, jack must be at rest, saddle down. Remove filler plug and inspect oil level. Level should be just over cylinder.

2. Keep the jack clean and well lubricated. Raise the saddle to full height and oil the surface of the ram often, as well as all moving parts in the handle, the pump pistons and the lifting mechanism. Frequently add grease to all fittings.



PART CODE H68040

2 TON HYDRAULIC SERVICE JACK

## 2 TON HYDRAULIC SERVICE JACK PART CODE H68040

Item No.	Parts Code	Description	Qty. Required
1	68125	Ram Plunger	1
2	68126	Ram-Spacer	1
3	68127	Bushing Cover	1
4	68128	Back-Up Washer	1
5	68129	"U" Cup-Ram	1
6	69452	Retaining Ring	1
7	68130	Base	1
8	69417	Filter	1
9	68131	Cylinder	1
10	68132	Back-Up Washer	1
11	68133	"O" Ring	1
12	68134	Reservoir	1
13	68135	"O" Ring	2
14	69415	Ball 1/4"	3
15	68136	Top Nut	1
16	68137	"O" Ring Top Nut	1
17	68138	Filler Screw	1
18	69437	"O" Ring Filler Screw	1
19	68139	Bolt	1
20	68140	Washer	1
21	68141	"O" Ring Bolt	1
22	68142	Ball 3/8"	1
23	68143	Guard Screw	1
24	68144	Oil Seal	1
25	68145	Screw Safety Valve	1
26	68146	Spring	1
27	68147	Spring Cap	1
28	68148	Release Valve	1
29	68149	Release Valve Connecting Rod	1
30	68150	"O" Ring	1
31	68151	Release Valve Lock Nut	1
32	68152	Release Valve Gear	1
33	68153	Lock Washer	1
34	68154	Nut	1
35	68155	Nylon Packing	2
36	68156	Collar	1
37	68157	Pump Piston	1
38	68158	Back-Up Washer	2
39	68159	"O" Ring Piston	2
40	68160	Screw	1
41	68161	Washer	1
42	68162	Washer	1
43	68163	Lift Arm Assy.	1
44	68164	Cotter Pin	1
45	68165	Return Spring	2
46	68166	Lock Washer	4
47	68167	Screw	4
48	68168	Handle Fork	1

Item No.	Parts Code	Description	Qty. Required
49	68169	Release Valve Connecting Bar	1
50	68170	Release Valve Gear	1
51	68171	Screw	1
52	68172	Lock Washer	1
53	68173	Retainer	1
54	68174	Washer	1
55	68175	Nut	1
56	68176	Lock Washer	2
57	68177	Handle Bolt (A)	1
58	68178	Handle Bolt (B)	1
59	68179	Return Spring	1
60	68180	Pin	1
61	68181	Handle (I)	1
62	68182	Handle (II)	1
63	68183	Spring Pin	1
64	68184	Screw	1
65	68185	Pin-Saddle Holder	1
66	68186	Saddle	1
67	68187	Washer	2
68	68188	Cotter Pin	3
69	68189	Screw	2
70	68190	Rear Caster Assy.	2
71	68191	Bearings	2
72	68192	Caster Bracket	2
73	68193	Lock Washer	2
74	68194	Nut	2
75	68195	R.H. Side Plate	1
76	68196	L.H. Side Plate	1
77	68197	Frame Tie Rod	2
78	68198	Lock Washer	2
79	68199	Nut	2
80	68200	Lock Washer	4
81	68201	Nut	4
82	68202	Front Wheel	2
83	68203	Washer	2
84	68204	Front Axle	1
85	68205	Snap Ring "E"	2
86	68206	Stud Radius Link	2
87	68207	Pin-Parallel Link	1
88	68208	Saddle Holder	1
89	68209	Parallel Link	2
90	68210	Main Pivot Pin	1
91	68211	Hyd. Unit (Not shown)	1
92	68236	Repair Kit (Not shown)	1
93	68510	Product/Warning Decal - English (Not shown)	1
	68509	Product/Warning Decal - French (Not shown)	1