

# HEIN-WERNER AUTOMOTIVE

## INSTRUCTION MANUAL /REPAIR PARTS LIST

30.11AA  
50.12AA  
100.12AA

HAND JACK  
HAND JACK  
HAND JACK

30 TON (27216 Kg) CAPACITY  
50 TON (45359 Kg) CAPACITY  
100 TON (90718 Kg) CAPACITY

MODEL H15375  
MODEL H15895  
MODEL H16005

### WARNING

1. THIS IS A LIFTING DEVICE ONLY. THE LOAD MUST BE SUPPORTED IMMEDIATELY BY OTHER APPROPRIATE MEANS.
2. DO NOT EXCEED RATED CAPACITY.
3. USE ONLY ON HARD LEVEL SURFACE CAPABLE OF SUSTAINING THE LOAD.
4. CENTER LOAD ON SADDLE.
5. IT IS YOUR RESPONSIBILITY TO KEEP WARNING DECALS LEGIBLE AND INTACT. REPLACEMENT DECALS MAY BE OBTAINED FROM THE FACTORY.
6. STUDY, UNDERSTAND, AND FOLLOW ALL INSTRUCTIONS PROVIDED WITH THIS JACK PRIOR TO OPERATION.
7. FAILURE TO HEED THESE WARNINGS MAY RESULT IN LOSS OF LOAD, DAMAGE TO JACK, OR FAILURE RESULTING IN PROPERTY DAMAGE, PERSONAL, OR FATAL INJURY.

H3128000

### OWNER'S RESPONSIBILITY

**Operation.** The owner and/or operator shall have an understanding of these operating instructions and warnings before operating the jack. Warning information shall be emphasized and understood. If the user is not fluent in English, the instructions and warnings shall be read to and discussed with the operator in the operator's native language by the purchaser/owner, making sure that the operator comprehends its contents.

**Maintenance.** The jack shall be maintained in accordance with instructions listed under "Maintenance."

#### Inspection

1. Visual inspection shall be made before each use of the jack, checking for leaking hydraulic fluid, and damaged, loose or missing parts.
2. Each jack shall be inspected by an authorized service center immediately, if subjected to an abnormal load or shock.
3. Owners and/or users should be aware that repair of this equipment may require specialized knowledge and

facilities. It is recommended that an annual inspection of the jack be made by an authorized service center and that any defective parts, decals or warning labels be replaced with genuine factory parts. A list of authorized service centers is available from the factory.

**Damaged Jacks.** Any jack which appears to be damaged in any way, is found to be badly worn, or operates abnormally SHALL BE REMOVED FROM SERVICE until necessary repairs are made by an authorized service center.

### INSTRUCTIONS BEFORE USE

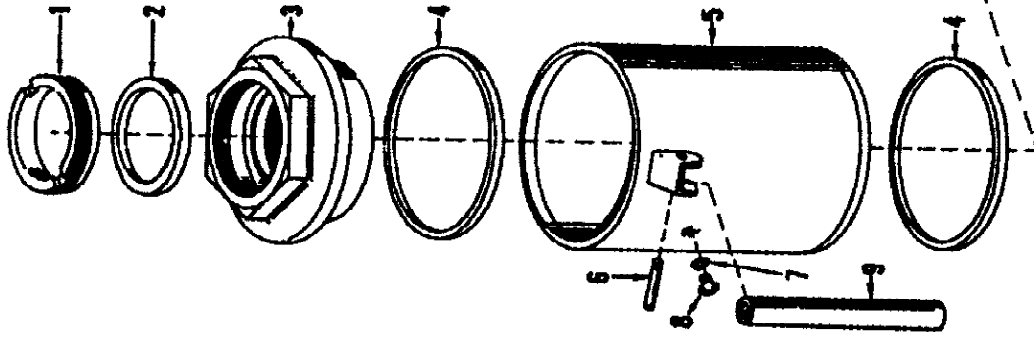
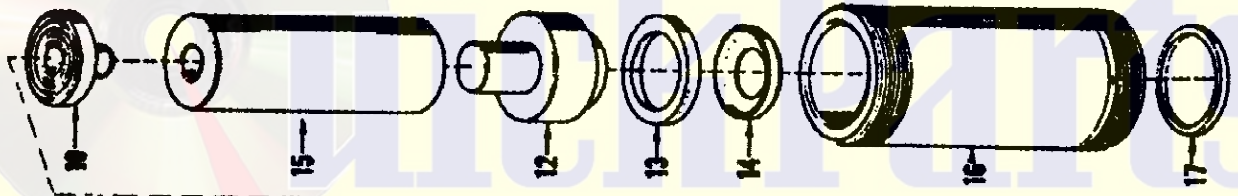
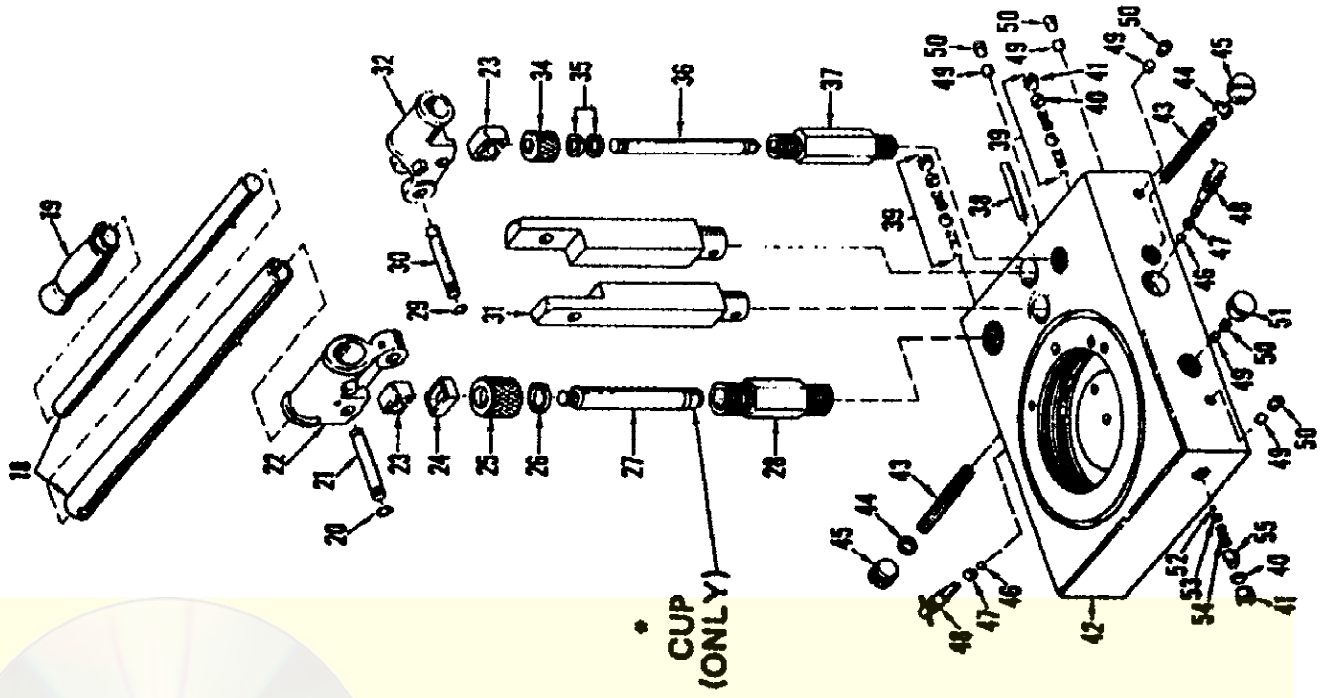
1. **Check oil level.** With the jack in an upright position and the ram completely retracted, open release valve by turning release assembly counterclockwise. Remove filler plug - the oil should be just up to the hole. Fill if necessary with clean hydraulic jack oil. Never use motor oil or brake fluid.
2. **Lubricate internal components.** With release valve open, pump handle six full strokes to assure proper internal lubrication.
3. **Bleed hydraulic system.** During transit hydraulic jacks may become "air-bound," causing spongy ram action. To bleed the hydraulic system - close the release valve by turning clockwise. Insert handle in socket and pump jack up to full height. Open the release valve, invert the jack and force the ram to retract. Repeat as required.

### OPERATING INSTRUCTIONS

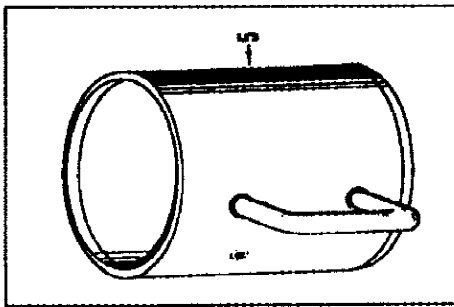
1. **Lifting.** Turn release assembly clockwise to close release valve. Position jack where desired and adjust extension screw if necessary, being sure that load is centered. Insert handle in socket and pump handle until load is desired height.
2. **Lowering.** Open release valve by **slowly** turning release assembly counterclockwise.

### MAINTENANCE

1. When jack is not in use, keep the ram and extension screw completely retracted and the release valve closed.
2. Keep the jack clean. Occasionally lubricate the handle socket pivot point, extension screw, and release screw thread.
3. Frequently check oil level. For procedure see "Instructions Before Use."



STYLE USED ON  
30 TON HAND JACK



PART CODE H15375  
PART CODE H15895  
PART CODE H16005

30 TON HAND JACK  
50 TON HAND JACK  
100 TON HAND JACK

ITEM NO.	DESCRIPTION	MODEL 30.11AA 15375	MODEL 50.12AA 15895	MODEL 100.12AA 16005	QTY. REQ.	ITEM NO.	DESCRIPTION	MODEL 30.11AA 15375	MODEL 50.12AA 15895	MODEL 100.12AA 16005	QTY. REQ.
1	Packing Nut	H0995500	H1294500	H0027000	1	30	Pin & Ring Assembly	H1546900	H1546900	H1546900	1
2	* Packing	H1008000	H1299500	H0029000	1	31	Handle Post	H1027000	H1305500	H0031000	2
3	Top Nut	H0983000	H1290500	H0025000	1	32	Handle Socket	H0986500	H0986500	H0986500	1
4	* Seat	-----	H1304500	H0030500	2	34	Packing Nut	H1012500	H1012500	H1012500	1
5	Reservoir Tube	H6680400	H1592800	H1600800	1	35	* Packing	H0414500	H0414500	H0414500	1
6	Roll Pin	-----	H2663500	H2663500	1	36	* Piston Assembly	H1547000	H1547000	H1547000	1
7	* Washer	H0485500	H0473000	H0473000	1	37	Pump Cylinder	H1027500	H1027500	H1027500	1
8	Filler Screw & Washer	H2562000	H6014100	H6014100	1	38	Drive Pin	H1020500	H1020500	H1020500	1
9	Handle	-----	H1298500	H1298500	1	39	* Pump Valves	H8012700	H8012700	H8012700	2
10	Saddle	H1011000	H1301000	H0029500	1	40	* Seat	H1152000	H1152000	H1152000	2
11	* O - Ring	-----	-----	H1626100	1	41	Plug	H1185500	H1185500	H1185500	2
12	Spacer	H0996000	H1295500	H0027500	1	42	Base & Post	H1546800	H1529900	H1600900	1
13	* Cup	H1001000	H1297500	H0028500	1	43	* Filter Screen	H0982000	H1289000	H0024000	2
14	Retainer	H1000500	H1296500	H0028000	1	44	Gasket	H2096500	H2096500	H2096500	2
15	Ram	H0991000	H1593000	H0026500	1	45	Plug	H1025000	H1025000	H1025000	2
16	Cylinder	H0988500	H1291500	H0025500	1	46	* Ball	H0257000	H0257000	H0257000	2
17	* Seal	H1024500	H1303500	H0024500	1	47	* Packing	H0452000	H0452000	H0452000	2
18	Handle Assembly	H6339100	H6339100	H6339100	1	48	Release Screw	H6705000	H6705000	H6705000	2
19	Handle Grip	H0933000	H0933000	H0933000	1	49	* Seal	H0734500	H0734500	H0734500	5
20	* Pin Ring	H1234500	H1234500	H1234500	2	50	Plug	H0358000	H0358000	H0358000	5
21	* Pin & Ring Assembly	H1547100	H1547100	H1547100	2	51	Plastic Plug	H6310400	H6310400	H6310400	1
22	Handle Socket	H0984400	H0984500	H0984500	1	52	* Ball	H1722000	H1722000	H1722000	1
23	* Clip	H0720500	H0720500	H0720500	2	53	Safety Valve Cap	H1705500	H1705500	H1705500	1
24	Clip Sleeve	H1014500	H1022500	H1022500	1	54	* Spring	H1690600	H1690600	H1690600	1
25	Packing Nut	H1014500	H1014500	H1014500	1	55	Adjusting Screw	H1752000	H1752000	H1752000	1
26	* Packing	H1008500	H1008500	H1008500	1	56	Product Decal (not shown)	H3229900	H3230000	H3230100	1
27	* Piston Assembly	H1551500	H1551500	H1551500	1	57	Warning Decal (not shown)	H3128000	H3128000	H3128000	1
28	Pump Cylinder	H0825500	H0825500	H0825500	1	59	Repair Kit (not shown)	H8074300	H8074400	H8074500	1
29	Pin Ring	H1267000	H1267000	H1267000	1						

\* INDICATES ITEMS INCLUDED IN REPAIR KIT