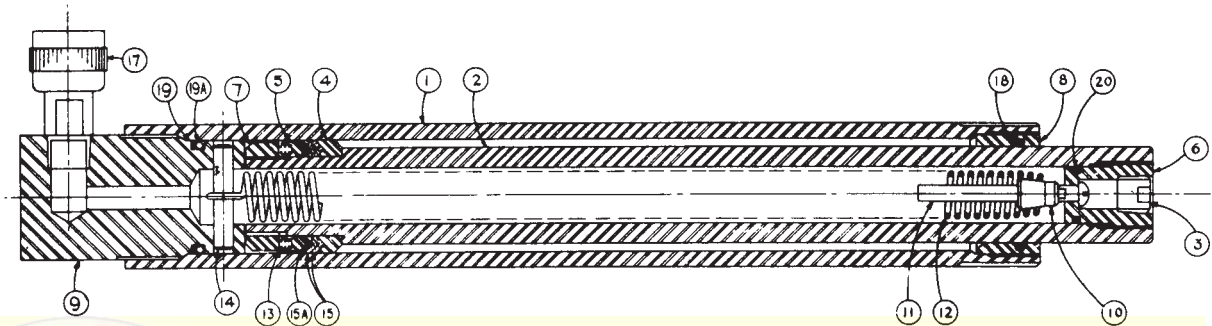




GOODYEAR TIRE TOOL RAM



Effective October 3, 1966

No.	Part No.	Description	No. Req'd
1	TO-100-21-1B	Cylinder	1
2	TO-100-21-2	Piston Tube	1
3	TO-100-21-3	1/4" Pipe Plug (Hex Socket)	1
4	TO-100-21-4	Female Packing Ring	1
5	TO-100-21-5	Male Packing Ring	1
6	TO-100-21-6	Threaded Plug	1
7	TO-100-21-7	Packing Nut	1
8	TO-100-21-8	Threaded Bushing	1
9	TO-100-21-9A	End Plug	1
10	TO-100-21-10	Spring Nut	1
11	12513NP	1/4"-20 NC x 3" Long Round Head Machine Screw	1
12	TO-100-21-12	Ram Return Spring	1
13	TO-100-21-13	Spring	4
14	TO-100-21-14	Pin	1
15	TO-100-21-15	Leather "V" Packing S-10-24	2
15A	TO-100-21-15A	Rubber "V" Packing S-2-24	1
18	TO-100-21-18	1/8" x 1/8" Felt Wiper Ring	1
19	TO-100-21-19	Leather Backup Washer S-17-27	1
19A	TO-100-21-19A	"O" Ring S-7-27	1
20	TO-100-21-20	"O" Ring S-7-13	1
17	TO-1600-RC	Ram Half Coupler	1
	TO-100-L	8 Foot Long Hose with Hose Half Coupler (3/8" NPT)	
21A	TO-100-21A	10" Stroke Ram Assembly (Without Half Coupler)	

NOTE: All other spare parts of the TO-100 Tire Tool must be obtained from Goodyear Tire & Rubber Company, Metal Products Division, Akron, Ohio.

CAUTION!

This is a 10-Ton Capacity Unit! We recommend using Goodyear Pump TO-100-PA as it has a "pop-off" valve set for 8,300 PSI maximum pressure. If other pumps are used, DO NOT exceed 8,300 PSI pressure.