

# Milwaukee

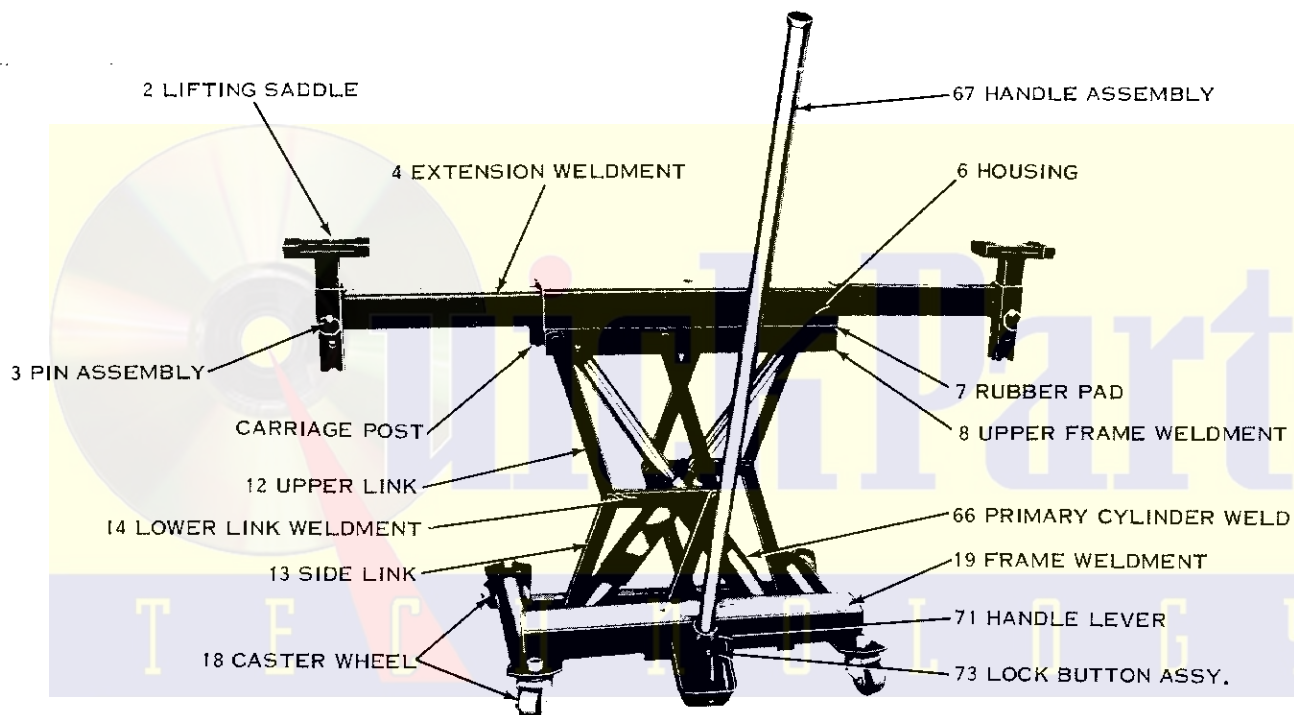
MODEL 600

# Auto-Lift

## OPERATING INSTRUCTIONS

## PARTS LIST

## MAINTENANCE GUIDE



### OPERATING INSTRUCTIONS

1. TO RAISE JACK - Turn HANDLE 67 in a clockwise direction until it stops. Pump handle to raise.
2. TO LOWER JACK - Turn HANDLE 67 in a counterclockwise direction. Speed of descent can be accurately controlled by the degree handle is turned.
3. TO REMOVE HANDLE - Pull out LOCK BUTTON 73 located on HANDLE LEVER 71. Pull out HANDLE 67.
4. TO REPLACE HANDLE - Insert HANDLE 67 into HANDLE LEVER 71 socket. LOCK BUTTON 73 automatically engages with handle to lock handle in place.
5. TO USE LIFTING SADDLES. Lifting SADDLES 2 may be adjusted to desired width by sliding the

EXTENSION WELDMENT 4 sideways within the HOUSING 6. Lifting saddles may be adjusted for height by selecting another set of holes for engagement with PIN ASSEMBLY 3. Lifting saddles may also be rotated 90° if desired.

6. TO USE WITHOUT LIFTING SADDLES. The entire saddle and housing assembly may be removed when extremely low starting height is desired. Simply lift the saddle and housing assembly straight up to disengage each CARRIAGE POST from its SOCKET.

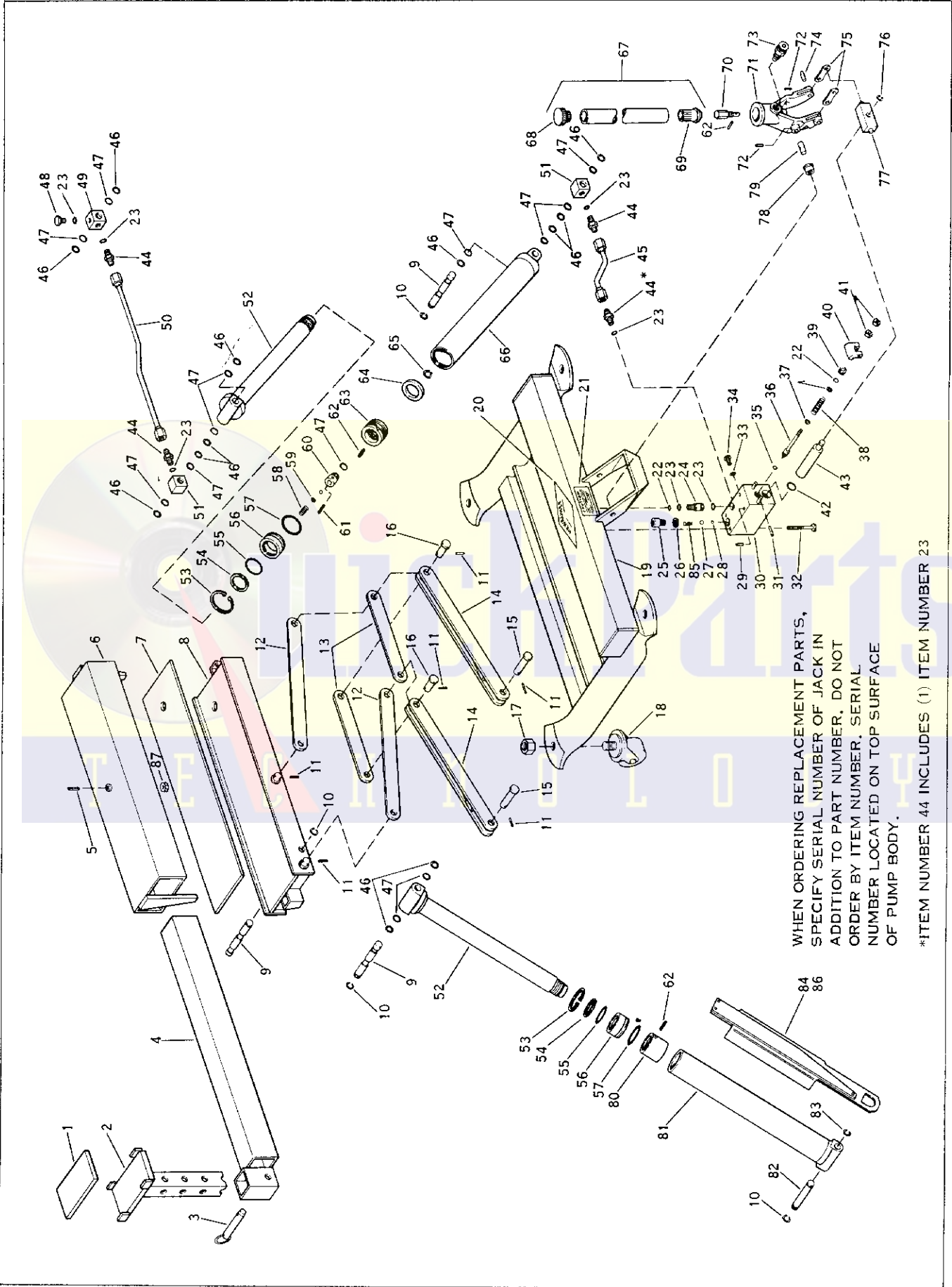
7. SAFETY CAUTION. This jack is designed for use as a lifting device. Do not overload; always use safety stands as a load support prior to performing any service work.

PRINTED IN U.S.A.

# Milwaukee

## HYDRAULIC PRODUCTS CORPORATION

MILWAUKEE WISCONSIN U.S.A. 53214



WHEN ORDERING REPLACEMENT PARTS, SPECIFY SERIAL NUMBER OF JACK IN ADDITION TO PART NUMBER. DO NOT ORDER BY ITEM NUMBER. SERIAL NUMBER LOCATED ON TOP SURFACE OF PUMP BODY.

\*ITEM NUMBER 44 INCLUDES (1) ITEM NUMBER 23

PARTS LIST

Milwaukee

MODEL 600

Ref. No.	Part No.	Description	No. Req'd.
1	1089	Rubber Pad	2
2	1095	Lifting Saddles	2
3	3687	Pin Assembly	2
4	1096	Extension Weldment	2
5	1063	Cap Screw	1
6	1098	Housing Weldment	1
7	1116	Rubber Pad	1
8	1038	Upper Frame Weldment	1
9	1055	Pivot Shaft	3
10	1024	Snap Ring	4
11	4075	Roll Pin 5/32 x 1"	12
12	1025	Upper Link	4
13	1026	Side Link	4
14	1031	Lower Link Weldment	4
15	1111	Lower Pin	4
16	1028	Pin	4
17	1113	Lock Nut	4
18	1123	Caster	4
19	1040	Frame Weldment	1
20	1129	Decal	1
21	1121	Safety Decal	1
22*	2279	O-Ring	2
23*	4410	O-Ring	7
24	1115	Pump Fitting	1
25	3009	Valve Plug	1
26*	1587	Valve Plug Washer	1
27*	2270	Ball	1
28*	2269	Ball	2
29	1003	Roll Pin	2
30	1039	Pump Body Assembly	1
31	1068	Roll Pin	3
32	1114	Fillister Head Screw	2
33	4425	Washer	1
34	1066	Screw	1
35*	2675	O-Ring 3/16"	1
36	2676	Release Needle	1
37*	2698	Washer	2
38	1049	Spring	1
39	2681	Tension Screw	1
40	1050	Release Plate	1
41	2283	Release Nut	2
42*	1124	O-Ring	1
43	1070	Pump Piston	1
44	1004	Male Connector	4

Ref. No.	Part No.	Description	No. Req'd.
45	1128	Lower Tubing	1
46*	1030	Back-up Washer	12
47*	1126	O-Ring	13
48	1074	Plug	1
49	1073	Swivel Fitting	1
50	1127	Upper Tubing	1
51	1020	Swivel Fitting	2
52	1056	Ram Weldment	2
53	1001	Retaining Ring	2
54*	2251	Back-up Washer	2
55*	2250	O-Ring	2
56	1015	Sleeve	2
57*	1125	O-Ring	2
58	1270	Spring	1
59	1120	Washer	1
60	1008	Balance Ch. Body	1
61	1006	Dowel Pin	1
62	2638	Roll Pin	3
63	1012	Piston Head	1
64*	1119	Sealing Ring	1
65	2217	Snap Ring	1
66	1057	Primary Cylinder	1
67	2190	Handle Assembly (Includes Item 68 & 69)	1
68	2694	Knob	1
69	2695	Release Driver	1
70	2637	Release Screw	1
71	1045	Handle Lever	1
72	1676	Roll Pin	4
73	4191	Lock Button Assembly	1
74	1048	Pin	2
75	1065	Link Side Plate	2
76	3242	Snap Ring	1
77	1046	Piston Carrier	1
78*	1067	Bushing	2
79	1103	Pin	2
80	1016	Piston Head	1
81	1058	Follower Cylinder	1
82	1054	Pivot Shaft	1
83	1011	Snap Ring	1
84	1023	Carrier Assembly-Front	2
*	M600KT	Repair Kit	
85	1077	Spring	1
86	1076	Carrier Assembly-Rear	1
87	1064	Lock Nut	1

GUARANTEE

MILWAUKEE products are guaranteed against defects in material and workmanship for one year from date of delivery to user, except the Model 5000 series Hand Jacks, which carry the standard 90-day guarantee. Defective Jacks or parts thereof will be repaired or replaced, at the option of the manufacturer, during the guarantee period, if returned to the factory or nearest Authorized Service

Depot, with transportation charges Pre-paid. A complete explanation of the defect and proof of purchase date must accompany the Jack. This warranty does not apply to Jacks or parts thereof damaged by brake fluid, tampering, abuse, overload or accident, nor does it apply to any product which has been altered or used with special attachments other than those recommended by the manufacturer.

### MAINTENANCE INSTRUCTIONS

1. LUBRICATION: We recommend periodic packing of the HANDLE LEVER 71 socket with grease to protect the RELEASE DRIVER 69 and RELEASE SCREW 70. Use SAE 30 Oil to lubricate CASTER WHEELS 18 and all pivot points.
2. HOW TO ADD HYDRAULIC OIL: The hydraulic system is divided into two separate systems designated as (a) primary and (b) follower.
  - 2a. THE PRIMARY SYSTEM. This system requires additional oil when the jack does not raise the full amount for each pump stroke as the jack nears its fully raised position. To add oil, release jack to its fully collapsed position and turn it upside down. Thoroughly clean the area around the PUMP BODY 30. Uncouple LOWER TUBE ASSEMBLY 45 at the pump body. Remove two FILLISTER HEAD CAP SCREWS 32. Pry pump body up with a screwdriver. PUMP FITTING 24 should be inserted into its hole in the reservoir. Oil can now be added to the reservoir through the hole in the pump fitting, which is designed to control the amount of oil and air required for proper operation. The correct amount of oil is in the reservoir when no more oil can be added through the pump fitting hole. This will provide an oil depth of 1-3/8 inches inside the reservoir. Reassemble and bleed air as in paragraph 3.

CAUTION: Do not use hydraulic brake fluid. It gums seals and check valves.

- 2b. THE FOLLOWER SYSTEM: This system requires oil when, on the first few pumping strokes, the piston in the FOLLOWER CYLINDER 81 does not move out at the same time as the piston in the PRIMARY CYLINDER 66. In this event, the jack should be pumped up without load to its fully raised position to balance the cylinders. Continue to pump until the jack automatically bypasses. The follower system has now been filled with the required amount of oil and the cylinders have been balanced.

NOTE: If the jack will not fully retract to a height of less than 7 inches, (floor to UPPER FRAME WELDMENT 8), check the follower piston to see that it is fully retracted. If not, this indicates there is too much oil in the follower system. The excess oil may be bled off by the following procedure:

Open release and lower jack as far as it will go by standing on UPPER FRAME WELDMENT. While standing on upper frame weldment, open PLUG 48 one revolution to allow excess oil to bleed out. When oil has stopped running, close plug. Jack is now ready for operation.

3. HOW TO BLEED AIR: Air is indicated in the system when jack does not rise on first stroke of pump handle. To bleed, close release valve and pump jack up 3 or 4 inches. Tilt jack to vertical position by lifting on right side. While in this position, open release valve and push on UPPER FRAME WELDMENT 8 to fully collapse jack. Return jack to horizontal position. Jack is now ready for use.

### SERVICE FACILITIES

While your MILWAUKEE Model 600 Auto Lift is designed and constructed to render long and dependable service, it may eventually require attention. Service is available through your Authorized Service Depot, as listed on the back of our catalog, your Local Distributor, or the Factory. It is recommended that you do not tamper with the internal mechanism of this Jack. Unwarranted damage may result.

**MILWAUKEE PRODUCTS ARE GUARANTEED LONGER  
BECAUSE THEY LAST LONGER**