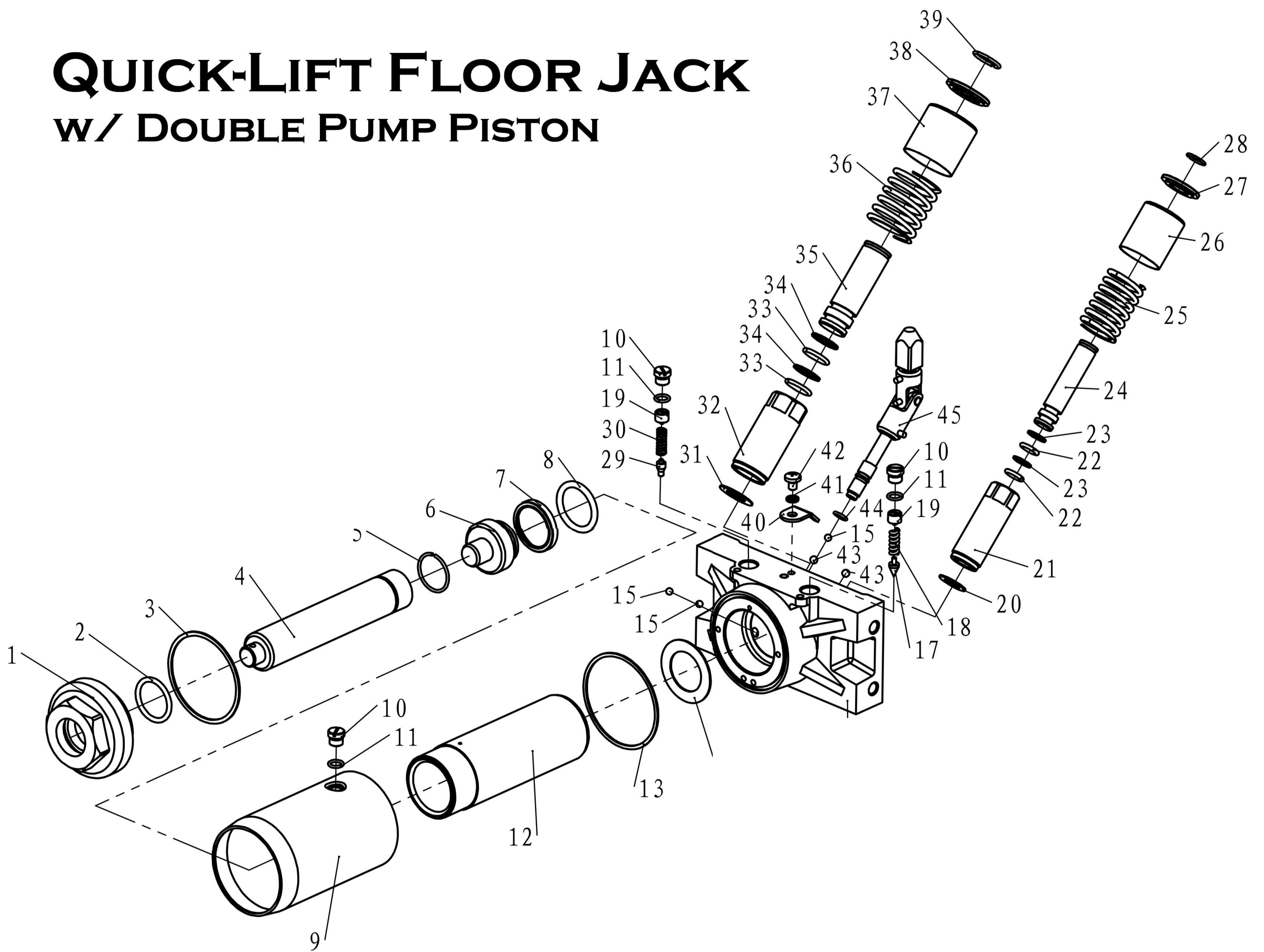


# QUICK-LIFT FLOOR JACK W/ DOUBLE PUMP PISTON



## PARTS LIST

NO.	DESCRIPTION	QTY	NO.	DESCRIPTION	QTY	NO.	DESCRIPTION	QTY
1	Tank nut	1	17	Safety valve	1	33	O-ring	2
2	O-ring	1	18	Relief valve spring	1	34	Sealing washer	2
3	Washer	1	19	Regulate bolt	2	35	Pump core	1
4	Ram	1	20	Washer	1	36	Press spring	1
5	Ring	1	21	Pump case	1	37	Pump outer case	1
6	Ram header	1	22	O-ring	2	38	Pump cover	1
7	O-ring returner	1	23	Sealing washer	2	39	Ring	1
8	O-ring	1	24	Pump core	1	40	Locker	1
9	Cylinder outer case	1	25	Press spring	1	41	Spring washer	1
10	Seal bolt	3	26	Pump outer case	1	42	Screw	1
11	O-ring	3	27	Pump cover	1	43	Ball	2
12	Cylinder	1	28	Ring	1	44	O-ring	1
13	Washer	1	29	Safety valve	1	45	Release assembly	1
14	Washer	1	30	Relief valve spring	1			
15	Ball	3	31	Washer	1			
16	Valve base	1	32	Pump case	1			