

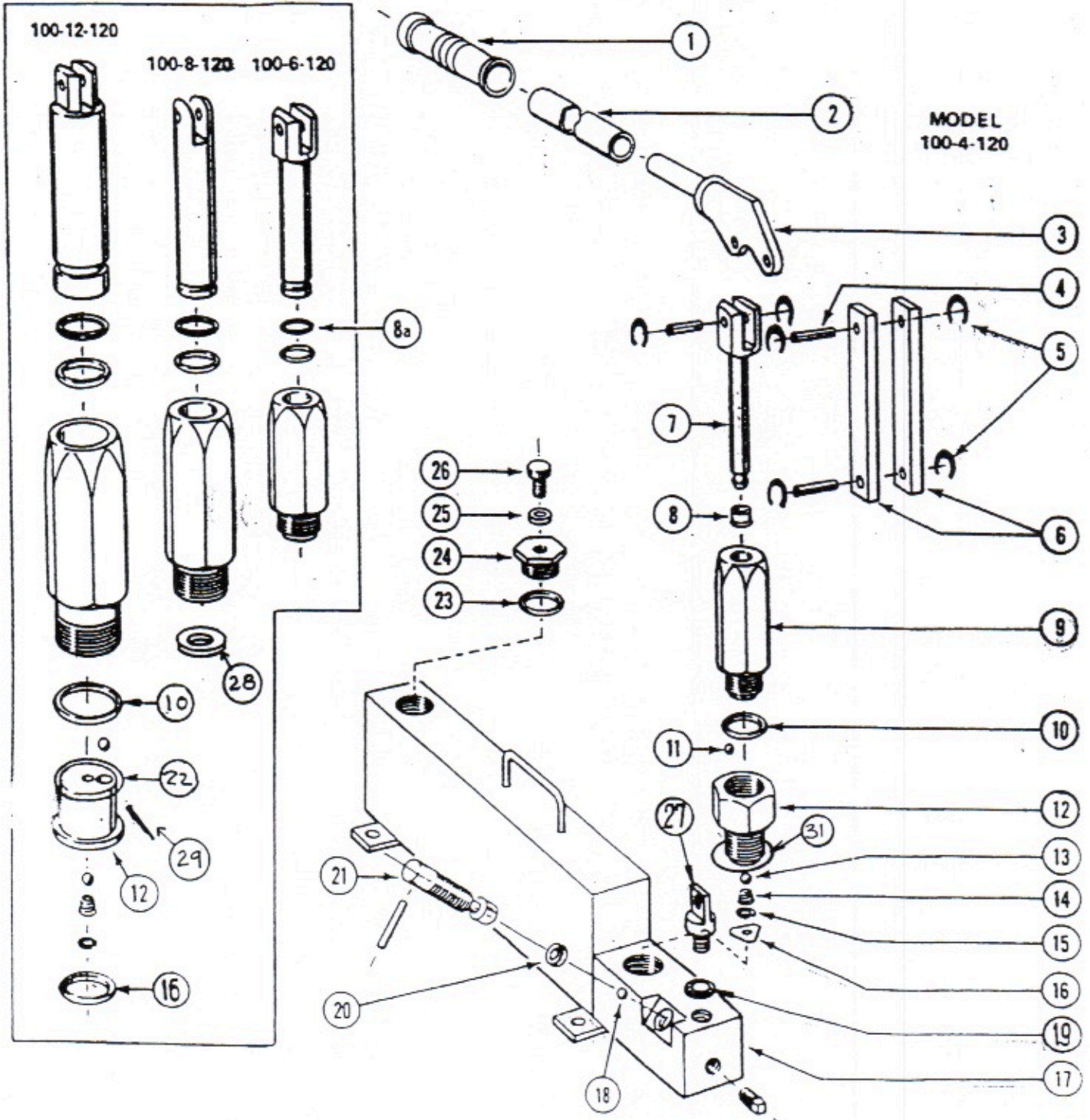
Modular Hand Pumps

Single Piston

Parts List and Data Sheet

Models:

100-4-120, 100-6-120,
100-8-120, 100-12-120



Parts List - 100-X-120

Item #	Quantity	Description	100-4-120	100-6-120	100-8-120	100-12-120
1 + 2	1	Handle/Grip Assembly	160022	160022	160022	160022
3	1	Lever	160002	160002	160002	160002
4	3	Pin	160005	160005	160005	160005
*5	6	Retaining Ring	650001	650001	650001	650001
6	2	Link	160003	160003	160004	160004
7	1	Piston	120004	120006	120008	120012
*8	1	Seal, Piston	550001	512113	512210	512218
*8A	1	Back-up Ring	N/A	518113	518210	518218
9	1	Barrel	110004	110006	110008	110012
*10	1	Seal, Barrel	512119	512119	512028	512225
*11	1	Check Ball	910002	910002	910002	910004
12	1	Valve Block	130002	130002	130003	130004
*13	1	Check Ball	910001	910001	910001	910003
*14	1	Spring	960001	960001	960001	960002
*15	1	Retaining Ring	650002	650002	650002	650008
*16	1	Washer	190000	190000	190000	512016
17	1	Block/Reservoir Assembly	180000	180000	180000	180002
*18	1	Release Ball	910002	910002	910002	910002
19	1	Lock Washer	640009	640009	640009	640009
*20	1	O-Ring Release Screw	512203	512203	512203	512203
21	1	Release Screw Assembly	170003	170003	170003	170003
*22	1	Seal, Valve Block	N/A	N/A	N/A	512029
*23	1	Seal, Fill Plug	512213	512213	512213	512213
24	1	Fill Plug	150014	150014	150014	150014
*25	1	Seal, Air Vent	590012	590012	590012	590012
26	1	Screw, Vent	150015	150015	150015	150015
27	1	Lug	160068	160068	160068	160068
28	1	Valve Block Washer	N/A	N/A	190003	N/A
*29	1	Pin Retaining	N/A	N/A	N/A	650018
30	1	Seal Kit	500004	500006	500008	500012
31	1	Valve Block, Base Seal	522120	522120	522120	N/A

Notes

- A.* Items are contained in the seal kit (Item #30) and are not sold separately.
- B. Items #19 and #27 have new part numbers effective August 1989. For units sold prior to that, the lockwasher (#19) is 640001 and the lug (#27) is 160001.
- C. Item #11 - use 2 for model 100-8-120.