

ColumbusJACK/Regent



**Model 941AS100
17 Ton Tripod Jack**

**Operation and Maintenance Manual
with Illustrated Parts List**

2222 South Third Street
Columbus, Ohio 43207-2402
Phone (614) 443-7492 FAX (614) 445-3981
sales@columbusjack.com

12/11/2008

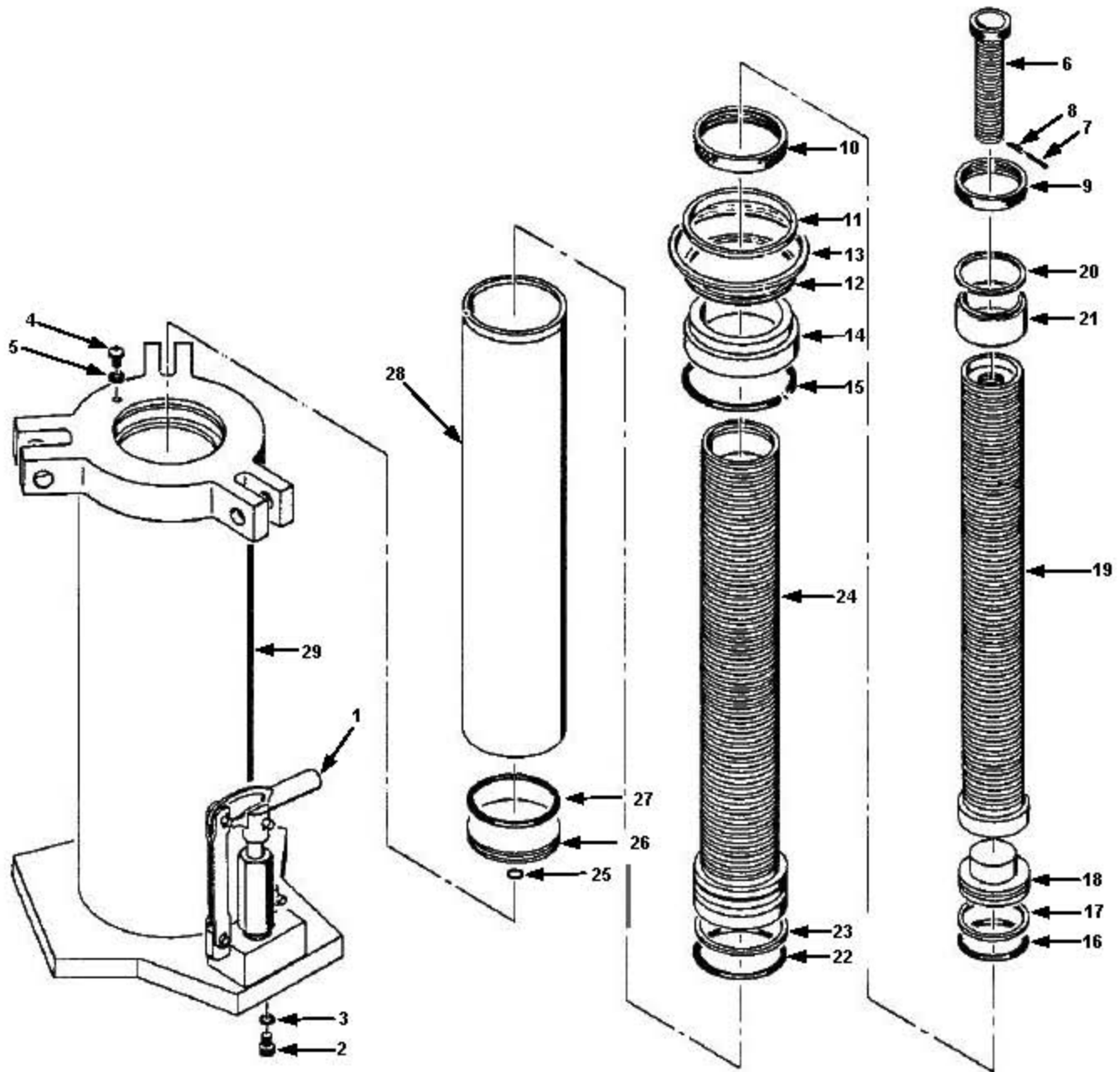
ColumbusJACK/Regent

Model 941AS100
 17 Ton Tripod Jack
 Page 1 of 2
 Figure 2

FIG. & ITEM NO.	PART NUMBER	DESCRIPTION	UNITS PER ASS'Y
2-	941AS101	Hydraulic Assembly	Ref.
-1	941AS128	Pump Assembly	1
-2	MS35957-36	Screw	2
-3	MS35338-29	Washer	2
-4	941AS126	Filler Plug	1
-5	942AS121	Air Vent Gasket	1
-6	941AS125	Extension Screw	1
-7	941AS131	Stop Pin	1
-8	53A22040	Stop Pin Spring	1
-9	941AS112	Second Stage Locknut	1
-10	941AS121	First Stage Locknut	1
-11	941AS129	Retaining Ring	1
-12	941AS130-3	Retaining Ring	1
-13	941AS130-2	Retaining Ring	1
-14	941AS120	First Stage Bushing	1
-15	AN6230B28	Packing	1
-16	MS28775-338	Packing	1
-17	MS35803-338	Backup Ring	1
-18	941AS110	Ram Piston	1
-19	941AS108	Second Stage Ram	1
-20	941AS130-1	Retaining Ring	1
-21	941AS111	Second Stage Bushing	1
-22	MS28775-345	Packing	1
-23	MS35803-345	Backup Ring	1
-24	941AS107	First Stage Ram	1
-25	MS28775-113	Packing	1
-26	941AS119	Base Plug	1
-27	MS28775-245	Packing	1
-28	941AS106	Cylinder	1
-29	941AS102	Hex and Base Assembly	1

ColumbusJACK/Regent

Model 941AS100
17 Ton Tripod Jack
Part No. 941AS101
Page 2 of 2
Figure 2



ColumbusJACK/Regent

Model 941AS100
 17 Ton Tripod Jack
 Page 1 of 2
 Figure 3

FIG. & ITEM NO.	PART NUMBER	DESCRIPTION	UNITS PER ASS'Y
3-	941AS128	Pump Assembly	Ref.
-1	MS28775-012	Packing	2
-2	AN380-3-3	Cotter Pin	3
-3	MS20392-4-25	Pin	2
-4	57A35B38	Link Pin	1
-5	MS20392-4-33	Pin	1
-6	57A35B35	Rocker Arm	1
-7	942AS116	Pump Piston	1
-8	57A35A37	Backup Ring	1
-9	MS28775-115	Packing	1
-10	57A35B36	Pump Body	1
-11	57A35A33	Valve Gasket	2
-12	57A35C32	Valve Assembly	1
-13	AN565A428H3	Valve Setscrew	1
-14	57A35A51	Valve By-pass Spring	1
-15	MS150454	Valve Ball	1
-16	57A35A50	Valve Retainer	1
-17	57A35A49	Valve Spring	1
-18	MS150457	Valve Ball	2
-19	57A35C52	Valve Body	1
-20	57A35A41	Valve Adjusting Screw Plug	1
-21	57A35A42	Gasket	1
-22	57A35A43	Release Valve Lock Screw	1
-23	57A35A44	Release Valve	1
-24	MS28775-011	Packing	1
-25	MS150461	Steel Ball	1
-26	942AS120	Pipe Plug	1
-27	57A35A40	Spring	1
-28	57A35A39	Fluid Screen	1
-29	941AS132	Pump Block	1

ColumbusJACK/Regent

Model 941AS100
17 Ton Tripod Jack
Part No. 941AS128
Page 2 of 2
Figure 3

