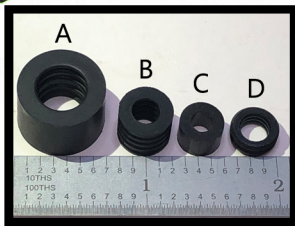


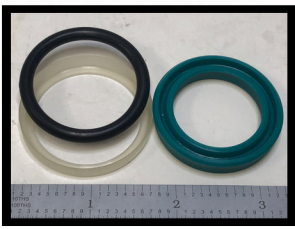
14. PUMP SEAL (Either Style)
See Page 3



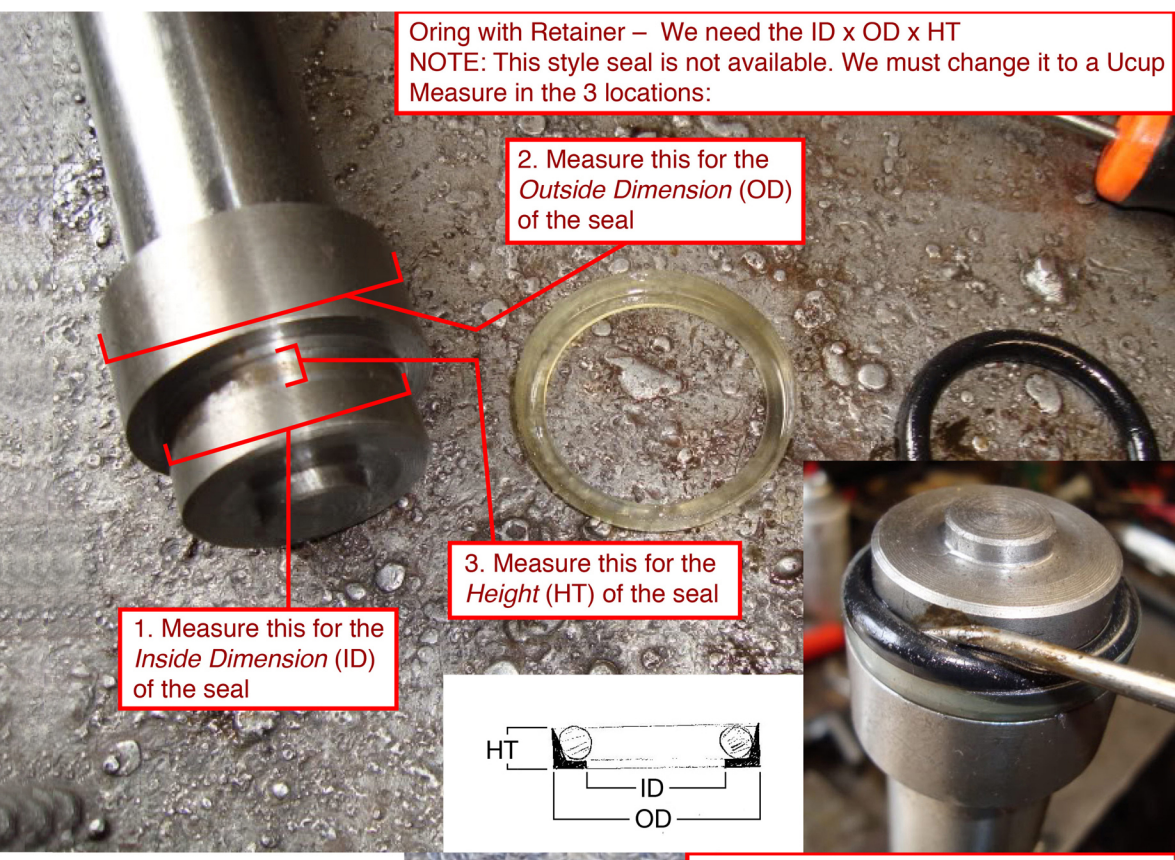
10. RELEASE VALVE SEAL (C&D are Obsolete)
See Page 5



3,7. O-RINGS (Different Sizes)
See Page 4



1,2. RAM SEAL(S) (Either Style)
See Page 2

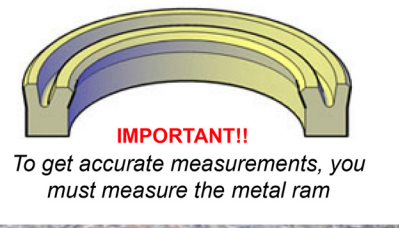
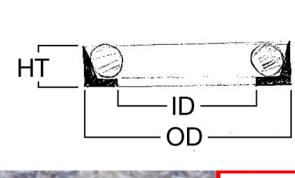


Oring with Retainer – We need the ID x OD x HT
NOTE: This style seal is not available. We must change it to a Ucup Measure in the 3 locations:

2. Measure this for the Outside Dimension (OD) of the seal

3. Measure this for the Height (HT) of the seal

1. Measure this for the Inside Dimension (ID) of the seal



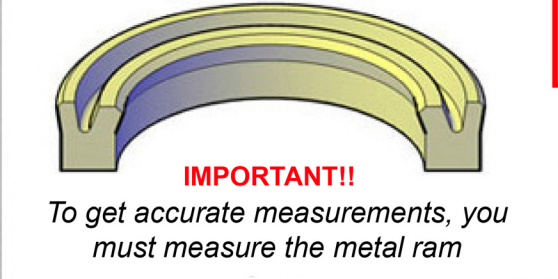
Ucup Seal – We need the I.D. x O.D. x Ht
Measure in the 3 locations:

If you have this lip, you will need a washer or backup for the seal to fill the extra space

O.D. Measure this for the Outside Dimension (O.D.) of the seal

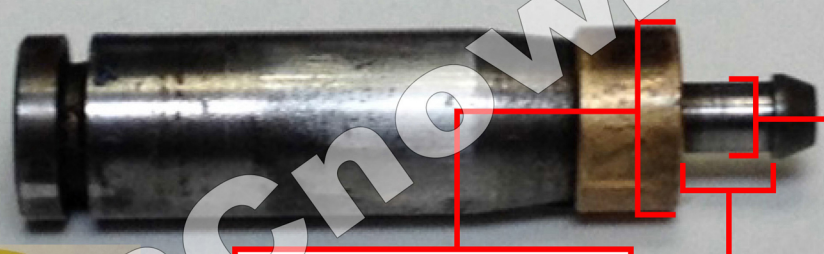
Ht. Measure this for the Height (Ht) of the seal

I.D. Measure this for the Inside Dimension (I.D.) of the seal



Ucup Seal – We need the I.D. x O.D. x Ht
Measure in the 3 locations:

I.D. Measure this for the Inside Dimension (I.D.) of the seal



O.D. Measure this for the Outside Dimension (O.D.) of the seal

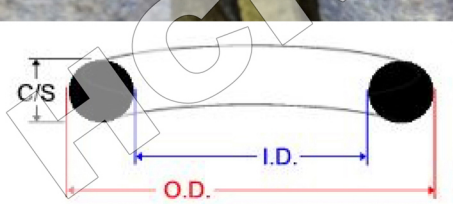
Ht. Measure this for the Height (Ht) of the seal



O-Ring – We need the I.D. x C/S
Measure in the 2 locations:

C/S. Measure this for the Cross Section (C/S) of the seal

I.D. Measure this for the Inside Dimension (I.D.) of the seal



How to Measure a Release Valve Seal

2. Measure this for the Outside Dimension (OD) of the seal.

1. Measure this for the Inside Dimension (ID) of the seal.

